



St. Mary's School, Dwarka

Holiday Homework 2026

Class: X

Worksheet 4

Subject: English

No. of questions: 9

M.M. 25

General Instructions:

- 1) The work should be done neatly and systematically.
- 2) The questions given are to be done in your respective subject notebooks.
- 3) Attempt all questions

Q1. Read the following passage.

1. Across different eras, societies have celebrated inventors, monarchs, and military leaders as the principal architects of progress. Textbooks frequently describe breakthroughs as the achievements of exceptional individuals whose brilliance altered the course of nations. Yet such portrayals often conceal a more complex reality. No discovery emerges in isolation, and no ruler governs without the invisible network of ordinary workers, assistants, and communities whose efforts sustain systems of power and innovation. Great achievements, therefore, are rarely solitary triumphs; they are collective enterprises disguised as individual glory.

2. Consider the construction of monumental architecture. While emperors commissioned vast palaces and temples, the actual labour belonged to engineers, labourers, and artisans who spent years shaping stone and timber into enduring forms. Their names disappeared from official records even though their skill transformed imagination into reality. Similarly, scientific progress has often depended not merely on celebrated thinkers but also on technicians, translators, apprentices, and patrons who preserved and transmitted knowledge across generations. Recognition, however, tends to gravitate toward a single visible figure, leaving countless contributors overlooked.

3. Historians increasingly argue that understanding civilisation requires attention not only to extraordinary personalities but also to ordinary routines. The study of marketplaces, irrigation systems, clothing, and household objects reveals how communities adapted to hardship and ensured survival. A civilisation's endurance frequently depends less on dramatic victories than on cooperation, discipline, and shared responsibility. Wars may alter borders overnight, but the habits of workers, farmers, and families quietly determine whether societies flourish or collapse over time.

Std. X Worksheet 4

4. Modern life reflects the same imbalance in recognition. A renowned entrepreneur may become the public face of a corporation, yet the organisation's success often relies on designers, clerks, programmers, delivery workers, and countless others whose labour remains largely unnoticed. Public admiration usually concentrates on a handful of visible figures because people are naturally drawn to symbols of leadership and success. Nevertheless, societies function only because ordinary individuals continue performing necessary tasks with consistency and dedication.

5. Perhaps the true measure of progress lies not simply in celebrating famous personalities but in acknowledging interdependence. When societies overlook the contributions of the many in favour of glorifying a few, they risk misunderstanding how achievements are truly created. civilisation is sustained not only by remarkable visionaries but equally by the perseverance of unnamed individuals whose efforts quietly uphold the world around them.

Based on your understanding of the passage, attempt the questions given below. (1x5=5)

i. Which of the following BEST captures the central argument of the passage? (1)

- a. Historical progress is driven mainly by charismatic rulers.
- b. Societies advance because exceptional individuals work independently.
- c. Collective effort often lies behind accomplishments credited to a few.
- d. Innovation flourishes only in economically prosperous empires.

ii. The reference to irrigation systems, marketplaces, and household objects mainly emphasises that ____ (1)

- a. material prosperity matters more than political stability
- b. historical study should focus exclusively on common people
- c. daily practices reveal how societies survive and endure
- d. wars had little influence on shaping civilisations

iii. Select the correct option. (1)

Assertion (A): Major accomplishments are seldom the work of a single individual alone.

Reason (R): Progress generally depends on the coordinated contribution of numerous visible and invisible participants.

- a. Both A and R are true, and R correctly explains A.
- b. Both A and R are true, but R does not explain A.
- c. A is true, but R is false.
- d. A is false, but R is true.

iv. Which of the following sentences uses the word ‘perseverance’ in the correct context, as used in the passage? (1)

- a. The child completed the puzzle through perseverance, refusing to abandon it despite repeated failures.
- b. The speaker’s perseverance confused the audience because his arguments changed every minute without logic.
- c. The museum displayed the king’s perseverance in a glass case beside several ancient coins and paintings.
- d. The sudden perseverance of thunder frightened the travellers and forced them to abandon the journey midway.

v. Which phrase best describes the tone of the passage? (1)

- a. reflective and analytical
- b. humorous and dismissive
- c. resentful and accusatory
- d. uncertain and speculative

Q2. You are Amit / Amita, a resident of 2/A, R.K Puram. New Delhi. You are interested in taking up a short-term course in computer graphics design. Write a letter to the Director of NIIT, New Delhi, seeking details about the course, content, eligibility, fees, timings and future scope of the course.

(3)
(½ x4=2)

Q3. Complete the following tasks as directed.

i. Fill in the blank by choosing the correct option to complete the statement from an article based on the social reformer Ishwar Chandra Vidyasagar.

He rightly viewed education as the primary way for women to achieve emancipation from the society’s oppression that they _____ face at that time. (½)

- a. will
- b. could
- c. had to
- d. must

ii. Identify the error and supply the correction for the following line. (½)

Despite the fact that numerous factors contributes to the phenomenon, the study focused primarily on the economic aspects rather than the sociocultural dimensions.

Use the given format:

Error	Correction

iii. Complete the given set of sentences by filling in the blank with the correct option: (½)

The defence mechanism of the human body is a gift of nature provided to human beings. The power of our body _____ various disease-producing agents is known as the defence mechanism.

- a. fighting with
- b. to fight about
- c. to have fought on
- d. to fight against

iv. Fill in the blank by using the correct form of the word in the bracket. (½)

I _____ (entreat) you address this at your earliest convenience and issue the recommendation letter.

Q4.i. Read the conversation between a grocer and a customer. Complete the sentence by reporting the salesman's question correctly. (½x4=2)

Customer: Please give me a 5 kg pack of rice.

Grocer: Which brand of rice do you want?

A customer requested a grocer to give him a 5 kg pack of rice. The grocer asked him _____. (½)

ii. Identify the error in the given sentence and supply the correction. (½)

There have also been several films, television and theatrical productions, and even an opera, based over the novel.

Error	Correction

iii. Jasprit Bumrah _____ two wickets before the rain _____ the play. (½)

- (a) took, interrupted
- (b) had taken, spoiled
- (c) was taking, interrupted
- (d) will take, disrupt

iv. Choose the most suitable option to complete the sentence.

(½)

The counsellor _____ the students to maintain confidence and remain calm during the examination.

- (a) advised
- (b) persuaded
- (c) encouraged
- (d) instructed

Answer the following questions in about 40 words.

(2 x 3 =6)

Q5. Why did Nelson Mandela feel that 'freedom is indivisible' and not just a personal experience?

(Nelson Mandela- Long Walk to Freedom)

Q6. Why does Anne think that 'paper' has more patience than people?

(From the Diary of Anne Frank)

Q7. How does the poet describe the boy's reaction to the loss?

(The Ball Poem)

Answer the following questions in 80 words:

(3)

Q8. Reflect on the role that humour and wit play in Anne's interactions with Mr Keesing in the lesson **From the Diary of Anne Frank**. How do these traits influence their relationship, and what does this dynamic reveal about **Anne's** approach to authority and conflict?

Q9. Design a poster on an A/4 sheet depicting the causes, consequences and solutions of **Deforestation**,

(4)

Subject: Hindi

No. of questions: 10

M.M. 25

प्रश्न 1 निम्नलिखित गद्यांश पर आधारित प्रश्नों के उत्तर उचित विकल्प चुनकर दीजिए: (1×5 = 5)

आज का छात्र कल का नागरिक होगा। उसी के सबल कंधों पर देश के निर्माण और विकास का भार होगा। किसी भी देश के युवक-युवतियाँ उसकी शक्ति का अथाह सागर होते हैं और उनमें उत्साह का सतत स्रोत होता है। आवश्यकता इस बात की है कि उनकी शक्ति का उपयोग सृजनात्मक रूप में किया जाए; अन्यथा वह अपनी शक्ति को तोड़-फोड़ और विध्वंसकारी कार्यों में लगा सकते हैं। यदि छात्रों की इस शक्ति को सृजनात्मक कार्य में लगा दिया जाए तो देश का काया पलट हो सकता है। आधुनिक युग विज्ञान का युग है। जिस देश का विकास जितनी शीघ्रता से होगा, वह राष्ट्र उतना ही महान होगा; अतः विद्यार्थियों के लिए यह आवश्यक है कि वे नवीनतम अनुसन्धानों के द्वार खोलें। चिकित्सा के क्षेत्र में अध्ययनरत विद्यार्थी औषध और सर्जरी के क्षेत्र में नवीन अनुसन्धान कर सकते हैं। वे मानवजीवन को अधिक सुरक्षित और स्वस्थ बनाने का प्रयास कर सकते हैं। जीवन के लिए परिपक्व ज्ञान परम आवश्यक है। अधिकचरे ज्ञान से गम्भीरता नहीं आ सकती, उससे भटकाव की स्थिति पैदा हो जाती है। इसीलिए यह आवश्यक है कि विद्यार्थी अपने ज्ञान को परिपक्व बनाएँ तथा अपने परिवार के सदस्यों को ज्ञान-सम्पन्न करने, देश की सांस्कृतिक सम्पदा का विकास करने आदि विभिन्न दृष्टियों से अपने इस परिपक्व ज्ञान का सदुपयोग करें। विद्यार्थी अपने सम-सामयिक परिवेश के प्रति सजग और सचेत रहकर ही राष्ट्र-निर्माण में अपना योगदान दे सकते हैं। अपने और राष्ट्र-जीवन को समृद्ध बनाने के लिए विद्यार्थियों को अपना नैतिक बल बढ़ाना चाहिए तथा समाज में नैतिक-जीवन के आदर्श प्रस्तुत करने चाहिए। आज का विद्यार्थी समाज में रहकर ही अपनी शिक्षा प्राप्त करता है। पहले की तरह वह गुरुकुल में जाकर नहीं रहता। इसलिए उस पर अपने राष्ट्र, परिवार और समाज आदि के अनेक उत्तरदायित्व आ गए हैं। जो विद्यार्थी अपने इन उत्तरदायित्वों अथवा कर्तव्यों का निर्वाह करता है, उसे ही हम सच्चा विद्यार्थी कह सकते हैं। इस प्रकार राष्ट्र-निर्माण के लिए विद्यार्थियों में कर्तव्य-परायणता की भावना का विकास होना परम आवश्यक है। राष्ट्र-निर्माण का तो मुख्य आधार ही अनुशासन है। इसलिए विद्यार्थियों का दायित्व है कि वे अनुशासन में रहकर देश के विकास का चिन्तन करें। जिस प्रकार कमजोर नीववाला मकान अधिक दिनों तक स्थायी नहीं रह सकता, उसी प्रकार अनुशासनहीन राष्ट्र अधिक समय तक सुरक्षित नहीं रह सकता।

(i) देश के युवक-युवतियाँ की शक्ति का उपयोग किस रूप में होना चाहिए?

- (क) राष्ट्र निर्माण कार्य में नहीं किया जाए ।
- (ख) सीमा रक्षा के लिए किया जाए ।
- (ग) विध्वंसकारी रूप में किया जाए ।
- (घ) सृजनात्मक रूप में किया जाए ।

(ii) सच्चा विद्यार्थी हम किसे कह सकते हैं?

- (क) जो उत्तरदायित्वों तथा कर्तव्यों का निर्वाह करता है ।
- (ख) जो उत्तरदायित्वों अथवा कर्तव्यों को नहीं जानता है ।

(ग) जो उत्तरदायित्वों अथवा कर्तव्यों का निर्वाह नहीं करता है।

(घ) जो केवल अधिकार पाना चाहता है।

(iii) निम्नलिखित कथन (A) तथा कारण (R) को ध्यानपूर्वक पढ़िए तथा दिए गए विकल्पों में से कोई एक सही विकल्प चुनकर लिखिए:- (1)

कथन (A) राष्ट्र-निर्माण का तो मुख्य आधार ही अनुशासन है।

कारण (R) अनुशासनहीन राष्ट्र अधिक समय तक सुरक्षित रह सकता है।

(क) कथन (A) तथा कारण (R) दोनों गलत हैं।

(ख) कथन (A) गलत है परन्तु कारण (R) सही है।

(ग) कथन (A) सही है परन्तु कारण (R) गलत व्याख्या करता है।

(घ) कथन (A) सही है तथा कारण (R) कथन की सही व्याख्या करता है।

(iv) जीवन के लिए किस प्रकार का ज्ञान परम आवश्यक है तथा क्यों?

(v) राष्ट्र निर्माण में विद्यार्थी की क्या भूमिका है?

निम्नलिखित प्रश्नों के उत्तर निर्देश के अनुसार दीजिए: : (1×5 = 5)

प्रश्न 2 घर के आँगन में लगे हरे-भरे पेड़ सूख गए। वाक्य में रेखांकित पदबंध कौन-सा है ?

प्रश्न 3 वह रात भर पढ़ता रहा। वाक्य में रेखांकित पदबंध कौन-सा है ?

प्रश्न 4 'तताँरा को देखकर वामीरो रोने लगी।' इस वाक्य का उपयुक्त मिश्र वाक्य क्या होगा ?

प्रश्न 5 विद्यालय के वार्षिकोत्सव में इतने अधिक काम थे उन्हें निपटाते निपटाते उचित मुहावरे से रिक्त स्थान भरिए।

प्रश्न 6 'भाँप लेना' मुहावरे का अर्थ लिखकर वाक्य बनाइए।

प्रश्न 7 निम्नलिखित प्रश्नों के उत्तर दीजिए — (1½×2 = 3)

(क) तताँरा को पर्व-त्योहारों में विशेष रूप से क्यों बुलाया जाता था? आप अपने परिवार के साथ किस प्रकार उत्सवों को मनाते हैं?

(ख) 'मनुष्यता' कविता के माध्यम से कवि क्या संदेश देना चाहता है ?

प्रश्न 8 निम्नलिखित प्रश्न का उत्तर दीजिए —

(2 ×1 = 2)

प्रश्न 1 जिन यंत्रणाओं के बीच वह घिरे थे और जिस मनः स्थिति में जी रहे थे, उसमें आँखें ही बहुत कुछ कह देती हैं, मुँह खोलने की जरूरत नहीं पड़ती। हरिहर काका की पंद्रह बीघे ज़मीन उनके लिए जी का जंजाल कैसे बन गई? कथन के आलोक में अपने विचार व्यक्त कीजिए।

प्रश्न 9 आप नई दिल्ली में रहने वाले अनुराधा/अनुराग हैं। आजकल दूरदर्शन पर प्रसारित कार्यक्रमों में अपशब्दों का बोलबाला है। इन कार्यक्रमों के प्रसारण पर रोक लगाने के लिए अनुरोध करते हुए किसी प्रतिष्ठित समाचार पत्र के संपादक को लगभग 100 शब्दों में

प्रार्थना पत्र लिखिए।

(5×1=5)

प्रश्न 10 अंडमान निकोबार द्वीप समूह की चित्रसहित प्राकृतिक एवं सांस्कृतिक विशेषताएँ प्रदर्शित करते हुए एक सुंदर टेबल कलेंडर बनाइए।

(5×1=5)

No. of questions: 10

M.M. 25

Q- 1. The decimal expansion of the rational number $\frac{43}{2^4 5^3}$ will terminate after how many places of decimals? (2)

Q- 2. Three bells toll at intervals of 9, 12, 15 minutes respectively. If they start tolling together, after what time will they next toll together? (2)

Q-3 Find another equation for $4x-7y-24=0$, such that the graph will represent (2)

(i) Intersecting lines (ii) parallel lines

Q-4 If sum of two numbers is 27 and their product is 182, then find the numbers. (2)

Q-5 Find the number of solutions for the following pairs of equations. (2)

(i) $x-2y=8$, $5x-10y=10$. (ii) $2x-5y+1=0$, $3x-y=0$

Q-6 Solve the following pair of linear equations by elimination method. (3)

$2x-3y=7$ (i), $4x-y=5$ (ii)

Q-7. Find the value of m, if $x + 4$ is a factor of the polynomial $x^2 + 3x + m$. (3)

Q-8. Show that $p - 1$ is a factor of $p^{10} + p^8 + p^6 - p^4 - p^2 - 1$. (3)

Q-9 Find the nature of roots for the following quadratic equations, find the roots if they exists.

(i) $2x^2-3x+ 7 = 0$ (ii) $6x^2+5x-1$ (3)

Q-10 α and β are the zeroes of the quadratic polynomial $x^2 - 6x+y$. Find the value of 'y'

if $3\alpha + 2\beta = 20$. (3)

FUN ACTIVITY:

Visit different places during vacation and observe the surroundings.

Collect pictures of objects, shapes, natural phenomena or structures which represent parabolic curves.

Prepare a collage on an A-3 sheet using these pictures.

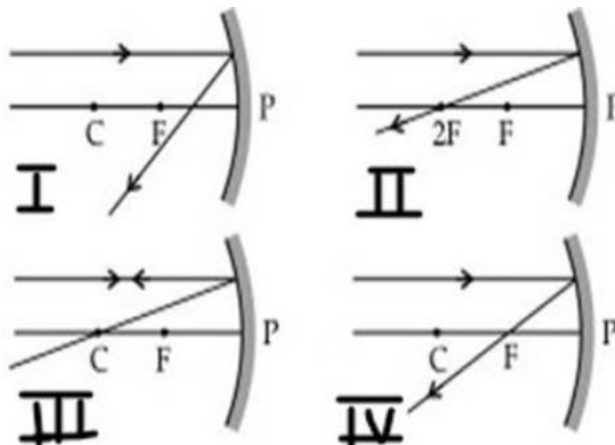
Subject: Science

Instructions:

* Neatly write the answers in your fair notebook.

* Attempt the questions keeping in mind the weightage of each question.

Q1. Which of the following ray diagrams is correct for a ray of light incident on a concave mirror as shown in the diagram? (1)



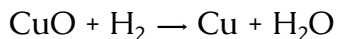
A. Ray diagram I

B. Ray diagram II

C. Ray diagram III

D. Ray diagram IV

Q2. A reaction is given:



(1)

Which statement best explains the reaction?

A. CuO is reduced and H₂ is oxidised

B. CuO is oxidised and H₂ is reduced

C. Both are oxidised

D. It is a decomposition reaction

Q3. **Assertion (A):** Sodium carbonate solution turns red litmus blue.

Reason (R): Sodium carbonate produces OH⁻ ions in water.

(1)

A. Both A and R are true and R explains A

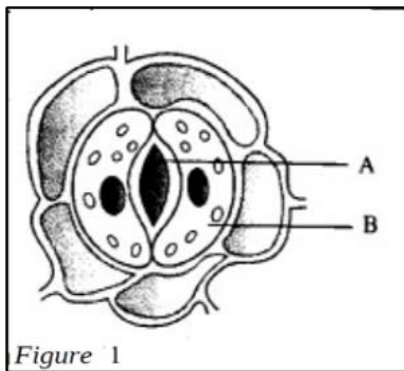
B. Both A and R are true but R does not explain A

C. A is true but R is false

D. A is false but R is true

Std. X Worksheet 4

Q4. Name the parts "A" and "B" in Figure 2. State one function of each part. (2)



Q5. An object of height 10 cm is placed in front of a convex lens having focal length of 12 cm. The object is placed at a distance of 36 cm in front of the lens. How many times is the image likely to be magnified? (2)

Q6 (a) Lions have no known natural predators. Based on energy transfer in a food chain, what could be the most likely reason for the above statement? (1)

(b) Create a food chain of the following organisms. (2)

Insect, Hawk, Grass, Snake, Frog

If 10,000 Joules of energy is available to frogs, how much energy will be available to snakes in this Food chain?

Q7. A student adds zinc granules to dilute sulphuric acid. A gas evolves which burns with a pop sound. (3)

a) Identify the gas

b) Write the balanced chemical equation

c) Explain why the reaction is considered a displacement reaction

Q8. Meera was looking at a coin lying at the bottom of a fountain. She noticed that the coin appeared to be raised above its actual position. (1+2)

(a) Name the phenomenon responsible for this effect.

(b) The refractive index of water is 1.33. If the speed of light in air is 3×10^8 m/s, calculate the speed of light in water.

Q9. During a school science exhibition, a student is demonstrating reactions using household substances. The student compares two reactions: (4)

1. Adding acid to a powdered chalk-like substance (metal carbonate) produces visible bubbling.
2. Adding the same acid to a metallic oxide powder (like rust-like substance) shows no bubbling, but the solid slowly dissolves.

The audience is confused: "Why does one produce gas while the other does not?"

You are asked to investigate this mystery and answer the questions:

Std. X Worksheet 4

- Identify gases (if any)
- Write reactions for both cases
- Identify common type of reaction
- Why are both reactions considered neutralisation?

Q10. Activity: Refraction of Light Through Different Liquids

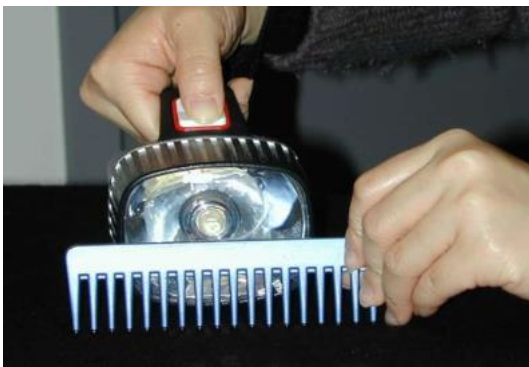
Objective: To observe the refraction of light through different transparent liquids and compare their effect on the bending of light rays.

Materials Required:

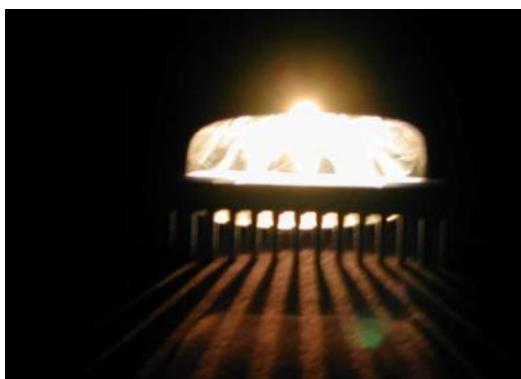
Flashlight, wide-toothed comb, two clear bottles/glasses, water, cooking oil

Procedure:

- Place the flashlight on a table and lean the wide-toothed comb in front of it.



- Switch on the flashlight and darken the room to observe the light beams passing through the gaps of the comb.



- Fill one clear bottle halfway with water and place it in the path of the light beams. Observe the change in the direction of light rays.

Std. X Worksheet 4



4. Note the point where the light beams appear to meet after passing through the liquid.
5. Repeat the activity using cooking oil instead of water and compare the bending of light rays in both liquids.



Subject: Social Science

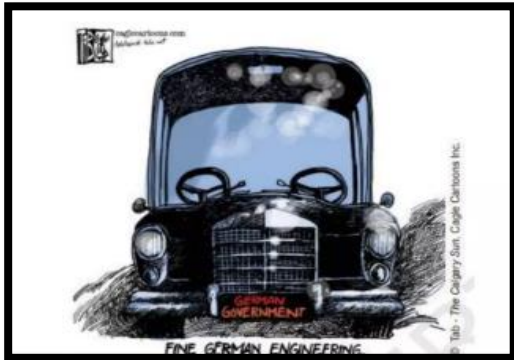
General Instructions:

- 1) The work should be done neatly and systematically.
- 2) The given questions are to be done in your respective subject notebooks.

No. of questions: 10

M.M. 25

- Q1. Why is it necessary to increase the area under forest in India? (1)
- Q2. What are ravines? (1)
- Q3. Why was the Khilafat movement started? (1)
- Q4. Which Act did not permit plantation workers to leave the tea garden without Permission? (1)
- Q5. What does this cartoon represent? (2)



- Q6. What amendments were made by the Constitution to make the third tier more powerful and effective? (3)
- Q7. On what basis are the developmental goals determined by different people? Give one example to prove that development for one may cause harm to others. (3)
- Q8. 'Conflicting goals can also be developmental goals'. Elaborate with examples. (3)
- Q9. Create a newspaper on the topic "Nationalism in India" as if you are reporting during the Indian freedom struggle. Include headlines, short news articles, interviews, slogans, and illustrations related to important events such as the Non-Cooperation Movement, Dandi March, Civil Disobedience Movement, Quit India Movement, and India's Independence. Add pictures/drawings of important leaders like Mahatma Gandhi, Bhagat Singh, and Subhas Chandra Bose along with brief descriptions of their role in the nationalist movement. Decorate the newspaper creatively with captions, timelines, patriotic slogans, and borders. (5)
- Q10. "Its surely a responsibility to do everything within our power to create a planet that provides a home not just for us, but for all life on Earth." -- Sir David Attenborough.
- (a) What is meant by the above quote? Explain two points. How does this quote align with sustainable development? (5)

Subject: Artificial Intelligence

- Attempt all the practical questions in MS-Word after executing the programs.
- Paste the source code and snip the output.
- Upload the PDF of the practical file under the assignment created on Microsoft Teams.

Using IDLE Python 3.7, write the programs for the following.

1. To accept three numbers and print their sum and average.
2. To convert the Fahrenheit temperature to Celsius. [C=(F-32)*5/9]
3. To print the surface area of a cylinder. [sa=2*3.14*r*(r+h)]
4. To convert the Celsius temperature into Kelvin temperature. [K=C+273]
5. To create a calculator to perform the following operations. a) ** b) // c) / d)%
6. To swap two numbers.
7. Check if a Number is Positive, Negative, or Zero
8. Find the largest of three numbers
9. Write a Python program to accept marks from the user and display the grade according to the following range:

Marks Range	Grade
90 - 100	A+
80 - 89	A
70 - 79	B
60 - 69	C
50 - 59	D
Below 50	Fail

10. To calculate the BMI (Body Mass Index) of a person.

The formula for BMI is:

$$BMI = \frac{weight}{height^2}$$

Std. X Worksheet 4

Where:

- Weight is kilograms (kg)
- Height is in meters (m)

Display the category according to the following ranges:

BMI Range	Category
Less than 18.5	Underweight
18.5 to 24.9	Normal Weight
25 to 29.9	Overweight
30 and above	Obese

Subject: Home Science

No. of questions: 10

M.M. 25

- Q1.** Which practice helps in preventing the growth of mold on food? (1)
- a) Storing food in a warm place
 - b) Keeping food in airtight containers
 - c) Leaving food uncovered
 - d) Storing food in direct sunlight
- Q2.** The primary purpose of washing fruits and vegetables before consumption is to: (1)
- a) Enhance their flavour
 - b) Remove pesticides and bacteria
 - c) Make them look shiny
 - d) Soften their texture
- Q3.** Which of the following is NOT a recommended practice for personal hygiene in the kitchen? (1)
- a) Tying back long hair
 - b) Wearing clean clothing
 - c) Wearing jewellery while cooking
 - d) Keeping fingernails short and clean
- Q4.** Cross-contamination can occur when: (1)
- a) Raw meat juices touch cooked or ready-to-eat foods
 - b) Using the same cutting board for meat and vegetables without cleaning
 - c) Using the same knife for raw and cooked foods without washing
 - d) All the above
- Q5.** How often should cutting boards be replaced to maintain food safety? (1)
- a) Every month
 - b) Once a year
 - c) Every five years
 - d) When they become excessively scratched or worn
- Q6.** Which of the following statements about food safety is TRUE? (1)
- a) Leftovers should be kept at room temperature until cool before refrigerating
 - b) Perishable foods should not be left out for more than two hours
 - c) Raw and cooked foods can be stored together in the refrigerator
 - d) It is safe to taste food to check if it has gone bad.

Std. X Worksheet 4

Q7. Very short answer type questions-

(5x1= 5)

- I. Write the full form of FSSAI.
- II. Why is it important to fill cracks and fishers in walls and flooring?
- III. What should be done before storing milk?
- IV. Which food group is the primary source of carbohydrates?
- V. Why should one wash their hands before eating?

Q8. Short answer type questions-

(2x2= 4)

- I. What do you mean by Dovetailing? Give one example of it.
- II. What do you mean by PPF?

Q9. Write a report on any five malpractices you have observed in the market and write your responsibilities as a consumer in each context.

(5)

Q10. Collect and paste care labels of different fabric clothes. Identify the symbols imprinted on them and write their care instructions.

(5)

Subject: Indian Music

No. of questions: 7

M.M. 10

- Q1. What is Tarana? (1)
- Q2. Name any two syllables commonly used in Tarana. (1)
- Q3. What is the purpose of Alap in a raga? (1)
- Q4. Fill in the blank:
Tarana is usually sung in a _____ tempo. (1)
- Q5. State whether true or false:
Alankars are useful for voice practice. (1)
- Q6. Write any two features of Tarana. (2)
- Q7. Explain the role of Alankars in learning classical music. (3)