



St. Mary's School, Dwarka
Holiday Homework 2026
Class: XII
Worksheet 4

Subject: English Core

No.of questions:- 4

MM.25

General instructions

- **There are four sections-Reading, Writing, Literature and Activity.**
- **Attempt all questions.**
- **Read pages 42 to 46 of the lesson 'The Enemy'.**
- **Kindly go through the recommended reading list provided below.**

READING

Q1. Read the passage carefully.

(5 marks)

1. Modern existence, saturated with incessant notifications, algorithmic distractions, and relentless productivity culture, has transformed escapism from an occasional indulgence into a near-universal psychological reflex. Traditionally, escapism referred to the tendency to avoid unpleasant realities through fantasy, entertainment, or daydreaming. However, contemporary forms of escape are far more sophisticated because they are seamlessly integrated into daily routines and often disguised as necessity rather than avoidance.
2. Streaming platforms automatically continue episodes before viewers consciously decide to proceed. Social media feeds are engineered to eliminate pauses that might provoke introspection. Even leisure has become curated and commodified. Individuals no longer merely escape reality; they inhabit parallel digital environments where identity can be selectively edited, discomfort muted, and vulnerability concealed behind performance. The distinction between genuine rest and emotional evasion therefore becomes increasingly ambiguous.
3. Yet escapism itself is not inherently detrimental. Literature, music, cinema, and imaginative play have historically provided emotional refuge during periods of grief, instability, and exhaustion. Psychological withdrawal may temporarily restore emotional equilibrium, allowing individuals to confront reality with

renewed resilience. Problems arise only when escapism evolves from restoration into permanent retreat. A society perpetually distracted loses not only attentiveness but also its capacity for sustained reflection.

4. Ironically, many contemporary systems actively encourage escapist behaviour while simultaneously glorifying productivity and self-improvement. People are urged to “disconnect” through wellness applications that themselves depend upon continuous digital engagement. Thus, modern escapism frequently operates within the very structures individuals seek temporary liberation from. The result is a paradoxical culture in which people feel simultaneously overstimulated and emotionally detached, hyperconnected yet profoundly isolated.

Based on the reading of the above passage, answer the questions that follow:- (1x5=5)

(i) What does the author imply by stating that modern escapism is ‘disguised as necessity rather than avoidance’?

- A. People consciously reject reality through entertainment.
- B. Escapist habits are embedded within socially accepted routines.
- C. Technology has eliminated all forms of emotional discomfort.
- D. Escapism today exists only in professional environments.

(ii) The phrase ‘parallel digital environments’ suggests that individuals:

- A. inhabit curated online spaces that permit selective self-presentation
- B. increasingly prefer virtual reality over physical interaction
- C. are unable to distinguish between truth and fiction
- D. deliberately isolate themselves from technological influence

(iii) Which of the following best explains why the distinction between “genuine rest” and “emotional evasion” becomes ambiguous?

- A. Leisure activities now require substantial economic investment.
- B. Emotional exhaustion has become a universal modern condition.
- C. Digital entertainment often masks avoidance as relaxation.
- D. Introspection has become psychologically harmful in modern society.

(iv) According to the passage, escapism becomes detrimental when it:

- A. encourages emotional restoration during stressful periods
- B. replaces sustained engagement with reality altogether
- C. involves excessive dependence on literature and cinema
- D. transforms leisure into a structured routine

(v) Which of the following best captures the central argument of the passage?

- A. Contemporary technology has destroyed meaningful leisure.
- B. Escapism can provide relief, but dependence upon it deepens emotional disconnection.

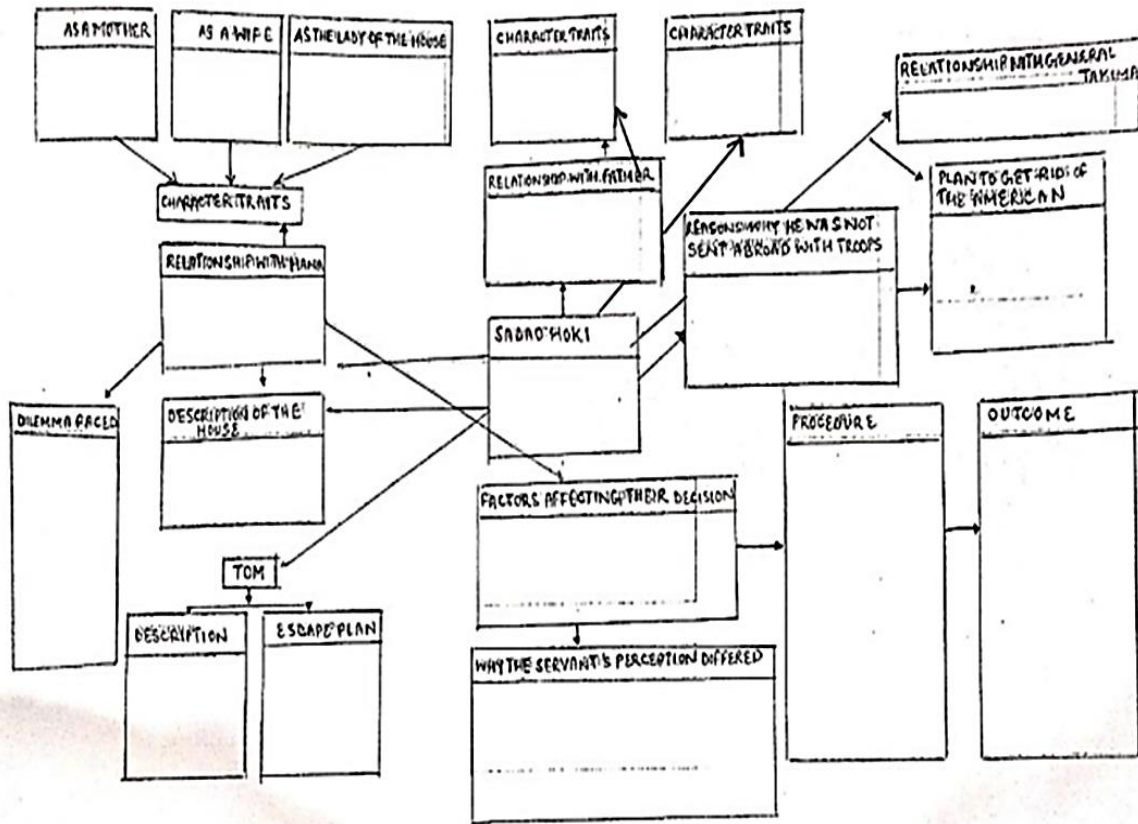
- C. Productivity culture is solely responsible for psychological instability among individuals.
- D. Modern entertainment industries deliberately manipulate audiences into passivity.

WRITING

Q2. You are Abhay/Abhaya Sharma , the Cultural Secretary of your school. Your school is organising an Inter-school workshop titled “Fake or Fact?” to spread awareness about fake news, AI-generated misinformation, and digital manipulation. Draft a notice in about 50 words informing students about the event and inviting registrations. (4)

LITERATURE

Q3. Based on the reading of the lesson ‘The Enemy’, complete the given mind map on an A3-size sheet. Use short phrases to write the points. (10)



ACTIVITY

Q4. Watch the movie ‘The Bridge of Spies’ OR read the book ‘The Boy in the Striped Pyjamas’. Write in 150 words: what similarities can you draw with the lesson ‘The Enemy’? (6)

Suggested Reading List

“The habit of reading sharpens thought, deepens imagination, and strengthens expression.”

During the holidays, students are encouraged to read **at least one book** from the suggested reading list given below. These books explore themes such as identity, courage, loneliness, friendship, social criticism, hope, and human resilience—many of which connect meaningfully with the themes studied in Class XII English.

Book & Author	Brief Summary
Before the Coffee Gets Cold by Toshikazu Kawaguchi	In a small Tokyo café, visitors can travel briefly into the past. Through emotional stories of love, grief, and reconciliation, the novel gently reminds readers about cherishing the present and expressing unspoken feelings.
Tuesdays with Morrie by Mitch Albom	Based on real conversations between a student and his dying professor, the book offers profound reflections on life, relationships, death, ambition, and happiness. Warm, thoughtful, and deeply inspiring, it leaves a lasting impact.
Life of Pi by Yann Martel	A young boy survives a shipwreck and finds himself stranded on a lifeboat with a tiger. Blending adventure, philosophy, survival, and spirituality, the novel questions truth, faith, and the power of storytelling.

Subject: Hindi Core

No. of Questions - 10

M.M- 25

प्रश्न 1 निम्नलिखित पद्यांश पर आधारित प्रश्नों के उत्तर निर्देश के अनुसार दीजिए :

(1×5 = 5)

खड़े हो जाओ! अब न समय खोना है,
अंधकार मिटाकर, नभ में ज्योत बोना है।
यह धरा हमारी, यह स्वर्ग से प्यारी है,
इसके हर कण में, छिपी एक फूलवारी है।
पर्वत के शीश पर, तिरंगा लहराना है,
नदियों की धारा में, संगीत सजाना है।
हर दिल में राष्ट्रभक्ति का भाव जमाना है,
कायरता को छोड़, पुरुषार्थ अपनाना है।
वीर प्रसूता यह भूमि, बलिदान माँगती है,
तुझसे केवल निष्काम, कर्म-प्रधान माँगती है।
डरना नहीं विपत्ति से, न रुकना मंज़िल से,
कर्मवीर ही रचते, इतिहास अपनी लगन से।

(i) कवि युवाओं से क्या न खोने को कह रहा है?

- (क) धन
- (ख) समय
- (ग) देश
- (घ) चरित्र

(ii) 'वीर प्रसूता' भूमि क्या माँगती है?

- (क) खून
- (ख) धन
- (ग) निष्काम कर्म
- (घ) स्वार्थ

(iii) 'पर्वत के शीश पर' क्या लहराना है?

- (क) फूल
- (ख) तिरंगा
- (ग) बादल
- (घ) बिजली

(iv) "वीर प्रसूता यह भूमि, बलिदान माँगती है" - इस पंक्ति के संदर्भ में राष्ट्रभक्ति के प्रति कवि के दृष्टिकोण को स्पष्ट कीजिए।

(v) काव्यांश के आधार पर 'कर्मवीर' की विशेषताओं पर प्रकाश डालिए।

प्रश्न 2 'सोशल मीडिया के लाभ व हानियाँ' विषय पर 100 से 120 शब्दों में अनुच्छेद लिखिए।

(5×1=5)

प्रश्न 3 टी.वी. खबरों के विभिन्न चरण कौन से हैं?

(2×2 = 4)

प्रश्न 4 फोन-इन में क्या होता है?

दिए गए प्रश्नों के उत्तर दीजिए :

(1½×4= 6)

प्रश्न 5 'आलो आँधारि' की लेखिका बेबी हालदार और भक्तिन के व्यक्तित्व में आप क्या समानता देखते हैं?

प्रश्न 6 'पैसे में पर्चेजिंग पावर है' स्पष्ट कीजिए।

प्रश्न 7 कविता के बहाने' कविता के कवि कुँवर नारायण' ने बताया है कि कविता और कवि की उड़ान को चिड़िया कभी नहीं जान सकती, क्यों?

प्रश्न 8 कवि ने पतंग के लिए किस प्रकार के विशेषणों का प्रयोग किया है?

प्रश्न 9 किशनदा का व्यक्तित्व कैसा था?

(1×1 = 1)

गतिविधि :

प्रश्न 10 अपने आस-पास के किसी व्यापारी का चित्र खींचकर चिपकाइए व उनका साक्षात्कार लगभग 100 शब्दों में लिखिए।

(4×1=4)

Subject: Mathematics

No. of questions: 10

M.M. 25

1. Evaluate: $\sin \left[\cos^{-1} \cos \left(\frac{7\pi}{6} \right) \right]$. (2)
2. Evaluate: $\tan \left[\cos^{-1} \left(\tan \frac{3\pi}{4} \right) \right]$. (2)
3. Evaluate: $\cos \left[\sin^{-1}(-1) - \tan^{-1}(-\sqrt{3}) \right]$ (2)
4. Evaluate: $\tan \left(\sin^{-1} 1 - \cos^{-1} \left(-\frac{1}{2} \right) \right)$ (2)
5. Find the value of : $\sin^{-1} \left(\sin \frac{2\pi}{3} \right) + \tan^{-1} \left(\tan \frac{5\pi}{6} \right) + \left(\cos \frac{13\pi}{6} \right)$. (2)
6. Evaluate: $\tan^{-1} \left(-\frac{1}{\sqrt{3}} \right) + \cot^{-1} \left(\frac{1}{\sqrt{3}} \right) + \tan^{-1} \left(\sin \left(-\frac{\pi}{2} \right) \right) + \tan^{-1} \left(\tan \frac{2\pi}{3} \right)$ (3)
7. Simplify: $\cot^{-1} \sqrt{\frac{1+\cos 2x}{1-\cos 2x}}$, $x \in \left(0, \frac{\pi}{2} \right)$ (3)
8. Simplify: $\cot^{-1} \left(\frac{\cos 2x - \sin 2x}{\cos 2x + \sin 2x} \right)$, $0 < x < \frac{\pi}{4}$. (3)
9. Simplify: $\sin^{-1} \sqrt{\frac{1+\cos 2x}{2}}$, $0 < x < \frac{\pi}{2}$ (3)
10. Find the domain of $g(x) = \cos^{-1}(x^2 - 1)$. Hence, find the value of x for which $g(x) = \frac{\pi}{3}$. Also, write the range of $\cos^{-1} x$ other than its principal branch. (3)

Subject: Physics

No. of questions: 10

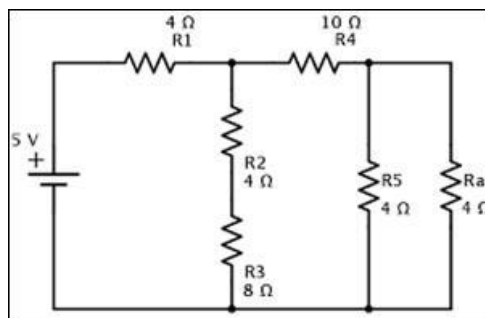
M.M. 25

Topic : Current Electricity

Please write answers to this worksheet in your classwork notebook.

Q1(i) Two wires of equal length, one copper and the other manganin, have the same resistance. Which wire is thicker? Explain. (ii) Resistance of a wire is $34\text{ k}\Omega \pm 5\%$. Write the order of colored rings representing the given resistance. (2)

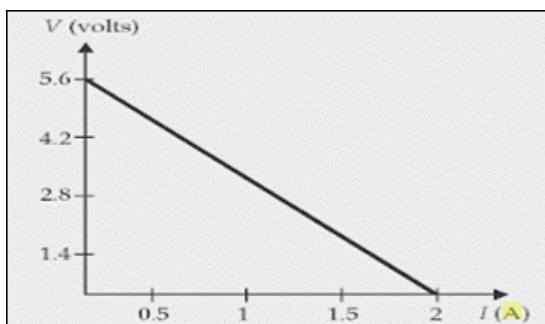
Q2. Find the net resistance of the network shown and the total current flowing in the circuit. (2)



Q3.(i) A wire of resistivity ρ is stretched to three times its initial length. What will be its new resistivity? Explain (ii) If the potential difference V applied across a conductor is increased to $2V$, how will the drift velocity of the electrons change? (2)

Q4. A cylindrical metallic wire is stretched to increase its length by 5% . Calculate the percentage change in its resistance. (2)

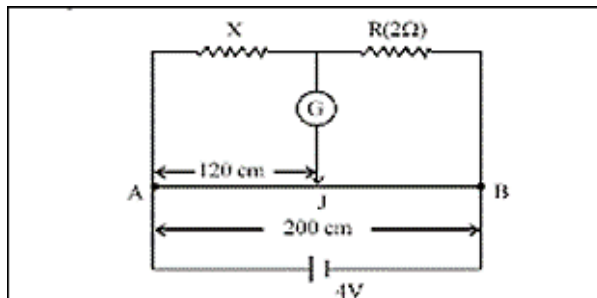
Q5. Four cells of identical emf E , internal resistance r , are connected in series to a variable resistor. The graph shows the variation of the terminal voltage of the combination with the current output: (i) What is the emf of each cell used? (ii) Calculate the internal resistance of each cell. (iii) For what current from the cells does maximum power dissipation occur in the circuit? (2)



Q6. The amount of charge passing through the cross-section of a wire is $q(t)=at^2+bt+c$. Write the dimensional formula for a , b and c . If the values of a , b and c in SI units are 6 , 4 , and 2 , respectively. Find the value of the current at $t=6$ seconds. (2)

Q7 At room temperature (27.0°C) the resistance of a heating element is $100\ \Omega$. What is the temperature of the element if the resistance is found to be $117\ \Omega$, given that the temperature coefficient of the material of the resistor is $1.70 \times 10^{-4}\ \text{^{\circ}}$. (2)

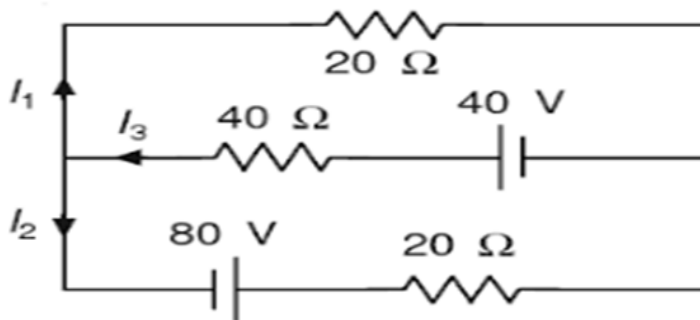
Q8. (i) In circuit shown in fig, Find the value of the unknown resistance X and the current drawn by the circuit from the battery, if no current flows through the galvanometer. Assume the resistance per unit length of the wire AB to be $0.01\ \Omega/\text{cm}$. (3)



(ii) In the circuit shown, $R_1 = 4\ \text{ohm}$, $R_2 = R_3 = 15\ \text{ohm}$, $R_4 = 30\ \text{ohm}$ and $E = 10\ \text{V}$. Calculate the equivalent resistance of the circuit and the current in each resistor.

Q9(i) A heater coil is rated $100\ \text{W}$, $200\ \text{V}$. It is cut into two identical parts. Both parts are connected in parallel to the same source of $200\ \text{V}$. Calculate the energy liberated per second in the new combination. (ii) A battery of emf $10\ \text{V}$ and internal resistance $3\ \Omega$ is connected to a resistor R . (i) If the current in the circuit is $0.5\ \text{A}$, calculate the value of R . (ii) What is the terminal voltage of the battery when the circuit is closed? (3)

Q.10 State Kirchhoff's rules of current distribution in an electric network. Using these rules, determine the value of the current in all the branches of the electric circuit of the given fig. (2+3=5)



Activity:

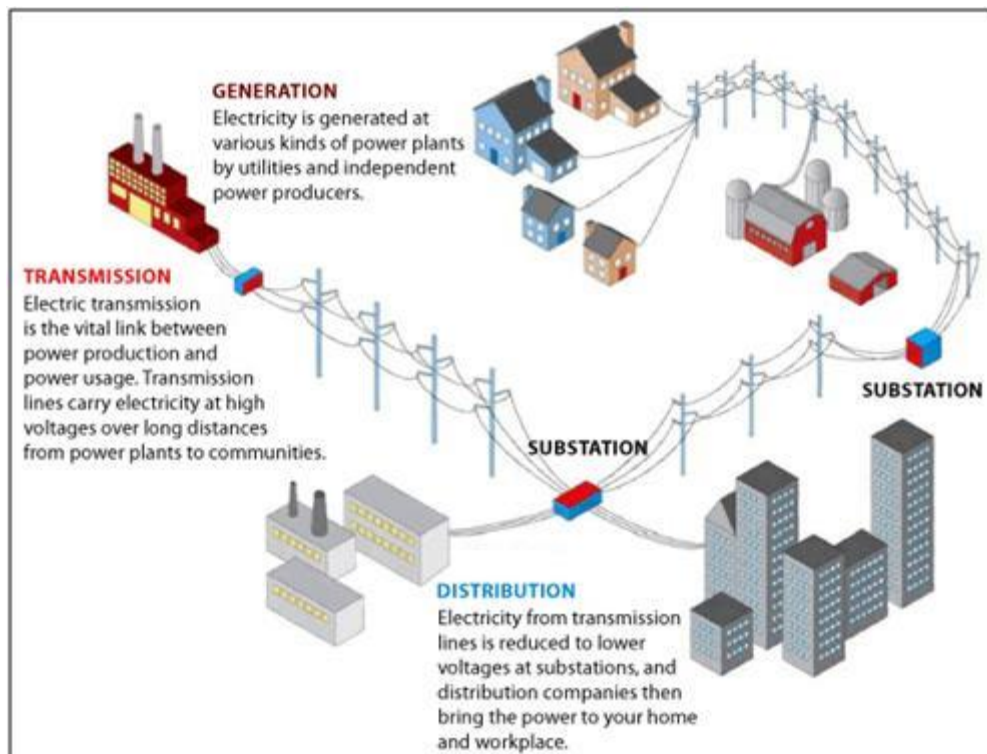
Answer the following questions :

Q1. Are transmission lines AC or DC?

Q2. Why transmission is done at High Voltage?

Q3. List five states in India with highest installed electricity generation capacity in Megawatts .

Q4. Check your electricity bill to find out the name of distribution company which supplies electrical energy to your house. Refer to your electricity bill to find out the number of units of electrical energy consumed during the month of April.



Subject: Chemistry**Section A: Very Short Answer**

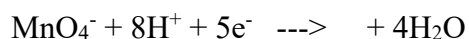
- Q1. Which of the 3d series transition metals exhibits the largest number of oxidation states? 1
- Q2. Why is Sc^{3+} ($Z=21$) colorless in aqueous solution? 1

Section B: Short Answer Type I

- Q3. Explain why transition metals and many of their compounds show paramagnetic behavior. 2
- Q4. Calculate the 'spin-only' magnetic moment of $\text{M}^{2+}(\text{aq})$ ion ($Z = 27$). 2
- Q5. Give reasons: Transition metals and their compounds act as good catalysts. 2

Section C: Short Answer Type II

- Q6. (a) Define Lanthanoid Contraction. 2
- (b) Complete the following ionic equation: 1



- Q7. When an oxide of manganese (A) is fused with KOH in the presence of an oxidising agent and dissolved in water, it gives a dark green solution of compound (B). Compound (B) disproportionates in neutral or acidic solution to give purple compound (C). An alkaline solution of compound (C) oxidises potassium iodide solution to a compound (D) and compound (A) is also formed. Identify compounds A to D and also explain the reactions involved. 3
- Q8. Describe the preparation of potassium dichromate ($\text{K}_2\text{Cr}_2\text{O}_7$) from chromite ore. (Write chemical equations only). 3
- Q9. Compare the chemistry of actinoids with that of lanthanoids with special reference to: 3
- Electronic configuration
 - Atomic and ionic sizes
 - Oxidation states

Section D: Long Answer

- Q10. Answer the following: 2
- (a) What is the cause of Lanthanoid Contraction? Mention any two consequences of it. 2
- (b) Account for the following: 3
- Zr and Hf have almost identical atomic radii.
 - E° value for $\text{Mn}^{3+}/\text{Mn}^{2+}$ couple is much more positive than for $\text{Cr}^{3+}/\text{Cr}^{2+}$.
 - The highest oxidation state of a metal is exhibited in its oxide or fluoride.

Subject: Computer Science

- Q1. Differentiate between Lists and Tuples on the basis of: (2)
a) Mutability
b) Syntax
c) Memory usage
d) Speed
- Q2. A list can contain elements of different data types, while dictionary keys should generally be immutable. Explain why immutable objects are preferred as dictionary keys. (2)
- Q3. What is meant by nested data structures in Python? Explain with one example of: (2)
A list containing dictionaries and a dictionary containing lists.
- Q4. Find the errors and rewrite the correct code. (2)
D = {"A":10, "B":20, "C":30}
for i in D
 print(i, D[i])
- Q5. Write a Python program to input 8 numbers in a list and display: (3)
a) Largest number
b) Smallest number
c) Average of all numbers
- Q6. Write a Python program to create a tuple of 6 integers and display: (2)
a) Sum of all elements
b) Maximum element
c) Minimum element
- Q7. Observe the following dictionary carefully and answer the questions given below: (3)
Student = {"Riya":85, "Aman":72, "Karan":91, "Megha":67}
- Write Python statements to:
a) Display names of students scoring above 80
b) Count students scoring below 75
c) Display average marks
- Q8. Case Study – Online Food Delivery System (3)
Prices = [250, 180, 320, 150, 400]
- Write Python code to:
a) Display the highest food price
b) Display the lowest food price
c) Calculate total bill amount and count food items costing more than 200

Q9. Case Study – Employee Record Management (3)
Emp = {"Aman":45000, "Riya":52000, "Karan":48000, "Megha":60000}

Write Python code to:

- a) Display names of employees earning more than 50000
- b) Find the highest salary
- c) Calculate average salary

Q10. Write a menu-driven program using lists for the following operations: (3)

1. Insert an element
2. Delete an element
3. Search an element
4. Display the list
5. Exit Use suitable functions in the program.

Subject: Biology

No. of questions: 10

M.M. 25

- Q1. What is Pleiotropy? Give an example of a human disease that shows this phenomenon. (1)
- Q2. Differentiate between Geitonogamy and Xenogamy. Which one is genetically similar to autogamy? (1)
- Q3. Mention the importance of LH Surge during the menstrual cycle. On which day does it typically occur? (2)
- Q4. What are Non-Sense Codons? Name them. (2)
- Q5. Define ZIFT and GIFT. How do they differ in terms of the site of transfer? (2)
- Q6. Describe the structure of a tRNA molecule. Why is it called an 'adapter molecule'? (3)
- Q7. Explain the Chromosomal Theory of Inheritance. Who proposed it? (3)
- Q8. Read the passage and answer the following questions:
DNA Fingerprinting is a technique used to identify the variations in individuals at the DNA level. It involves identifying differences in specific regions of DNA sequence called as repetitive DNA, because in these sequences, a small stretch of DNA is repeated many times. These sequences show a high degree of polymorphism and form the basis of DNA fingerprinting.
1. What is the full form of VNTR? (1)
 2. Which technique is used to amplify the DNA sample if it is available in very low quantity? (1)
 3. Name the scientist who developed the technique of DNA fingerprinting. (1)
 4. Mention one application of DNA fingerprinting in forensic science. (1)
- Q9. Read the passage and answer the following questions:
Thalassemia is an autosome-linked recessive blood disease transmitted from parents to the offspring when both the partners are unaffected carriers for the gene. The defect could be due to either mutation or deletion which ultimately results in reduced rate of synthesis of one of the globin chains (alpha and beta chains) that make up haemoglobin.
1. How is Thalassemia different from Sickle-cell anaemia in terms of globin synthesis? (1)
 2. What happens to the iron levels in the body of a Thalassemia patient due to repeated blood transfusions? (1)
- Q10. What is Megasporogenesis? Explain the development of a 7-celled, 8-nucleate embryo sac in Angiosperms with the help of a neat labeled diagram. (5)

Subject: Business Studies

No. of questions: 10

M.M: 25

- Q.1 Aria Tech Labs gives its entry-level research engineers the autonomy to select their own daily project micro-tasks, provided they meet the broad weekly product delivery deadlines set by top management. This empowerment boosts employee morale and fosters a strong sense of ownership. Which significance of management does this reflect? 1
- a) Management increases efficiency
 - b) Management creates a dynamic organization
 - c) Management helps in the development of society
 - d) Management helps in achieving personal objectives
- Q.2 A production worker at Metal Forge Inc. feels that the supervisor treats workers from different regions unequally when assigning overtime work bonuses. This discriminatory practice is a direct violation of which management principle? 1
- a) Remuneration of Employees
 - b) Equity
 - c) Scalar Chain
 - d) Initiative
- Q.3 Digital payment apps like UPI saw massive growth in India after the government's push for a cashless economy and the rapid rollout of high-speed 4G/5G networks. This is a classic example of which characteristic of the business environment? 1
- a) Inter-relatedness
 - b) Relativity
 - c) Specific and General Forces
 - d) Complexity
- Q.4 A premium chocolate manufacturer creates a detailed strategy to source organic cocoa beans from Ghana for its Valentine's Day special edition line. However, due to unexpected international trade sanctions, the import licenses are frozen indefinitely. The company has no backup plan and suffers massive financial losses. This highlights which limitation of planning? 1
- a) Planning reduces creativity.
 - b) Planning does not guarantee success and can lead to false security if backup options are ignored.
 - c) Planning involves huge costs.
 - d) Planning is a continuous process.
- Q.5 Siddharth, the Marketing Director of an FMCG giant, transfers the authority to design a localized regional promotional campaign to his subordinate, Rohan. However, the campaign runs into controversy due to a glaring translation error in the advertisements, causing a public relations issue. Who will be held accountable for this failure to senior management? 1

- a) Rohan alone, because authority was transferred to him.
- b) Siddharth alone, because accountability is absolute and cannot be delegated.
- c) Both Siddharth and Rohan equally.
- d) The translation vendor alone.

Q.6 Explain how the business environment acts as a critical strategic tool for an enterprise to "Identify threats and operate as an early warning signal." Provide a brief real-world or case-based scenario to support your explanation. 3

Q.7 Vertex Software Solutions is expanding its business operations into cloud architecture services. The management wants to ensure a smooth transition by carefully mapping out its resource layout. Describe how the Organising process plays a vital role in enabling Vertex Software Solutions to adapt to technological changes and foster executive development. 3

Q.8 Karan, a production manager at Durable Plastics, strictly follows the rule of thumb. He firmly believes that setting worker targets based on personal intuition and past experience is much faster than conducting scientific time and motion studies. As a result, the factory floor faces constant friction, missing production deadlines and seeing high worker turnover. Compare Karan's approach with the Taylor's principle of "Science, Not Rule of Thumb" and explain how moving away from intuitive decision-making can benefit the factory floor. 4

Q.9 Future Vision Retail Group wants to achieve a 40% growth in its e-commerce sales channel over the next year. The CEO asserts that to make this a reality, the team must draft a clear, actionable plan. However, the operations head thinks that detailed planning is a wasteful, time-consuming exercise that delays quick decision-making in the fast-paced retail sector. Defend the CEO's stance by explaining how Planning provides direction and reduces the risks of uncertainty for Future Vision Retail Group. 4

Q.10 Ananya, the Managing Director of Eco Craft Furniture Ltd., is overwhelmed with routine operational problems, such as resolving minor worker disputes, tracking daily lumber stock entries, and approving routine maintenance bills. As a result, she has no time to focus on critical strategic goals, like negotiating export contracts or designing sustainable furniture lines. She decides to systematically restructure the management team by implementing the concepts of Delegation and Decentralisation.

- (a) Differentiate clearly between Delegation and Decentralisation based on any three distinct parameters.
- (b) Explain how implementing these two concepts will help Ananya reduce her operational burden and empower her subordinate staff. 6

Subject: Accountancy

No. of questions:10

M.M: 25

Answer Q1 & Q2 on the basis of following:

A financial controller is analyzing the cash flow dynamics of a digital services firm, "Pixel Media Ltd." For the year ended March 31, 2026, the firm reported a Net Profit after tax of ₹5,00,000. The company's comparative balance sheets revealed that "Trade Payables" decreased from ₹90,000 to ₹60,000, while "Prepaid Insurance" decreased from ₹15,000 to ₹5,000.

- Q.1 What is the net impact of the changes in Trade Payables and Prepaid Insurance when adjusting the operating profit via the indirect method? 1
- (a) Net addition of ₹40,000
 - (b) Net deduction of ₹20,000
 - (c) Net deduction of ₹40,000
 - (d) Net addition of ₹20,000
- Q.2 If the company purchased marketable security instruments with an active liquidation window of 30 days using its excess cash balances, how will this transaction be classified in the Cash Flow Statement? 1
- (a) Outflow under Investing Activities
 - (b) Inflow under Financing Activities
 - (c) It will be treated as an internal movement between cash components, resulting in no net cash flow change.
 - (d) Outflow under Operating Activities
- Q.3 If the total credit sales of a company during a year are ₹6,00,000 and the Average Trade Receivables stand at ₹1,00,000, the Trade Receivables Turnover Ratio and corresponding average collection period will be: 1
- (a) 6 times; 2 months
 - (b) 5 times; 2.4 months
 - (c) 6 times; 60 days
 - (d) 4 times; 3 months
- Q.4 When a partnership deed does not exist, a partner who has advanced a personal loan to the firm is legally entitled to interest on that loan at a rate of: 1
- (a) 6% per annum out of profits only
 - (b) 6% per annum as a mandatory charge against profits
 - (c) 12% per annum compounding quarterly
 - (d) No interest can be claimed without a deed.
- Q.5 Which of the following items is explicitly excluded from the calculation of the Liquid (Quick) Asset pool when evaluating short-term solvency? 1
- (a) Bills Receivable
 - (b) Cash equivalents and short-term bank balances
 - (c) Inventory stock and Prepaid Expenses
 - (d) Short-term Trade Investments
- Q.6 State the Major Head and Sub-Head under which the following items are disclosed in a corporate

balance sheet as per the provisions of Schedule III of the Companies Act, 2013: 3

1. Forfeited Shares Account
2. Capital Work-in-Progress (CWIP)
3. Public Deposits accepted from the market

Q.7 A and B are partners sharing profits equally. On March 31, 2026, after closing the accounts and distributing the year's profit of ₹1,20,000 and accounting for drawings of ₹30,000 each, their fluctuating capital account balances stood at ₹3,50,000 and ₹2,50,000 respectively. Calculate their Opening Capital balances as of April 1, 2025, 3

Q.8 From the following information extracted from the financial records of Solar Power Systems Ltd., construct a **Common-Size Statement of Profit and Loss** for the year ended March 31, 2026: 4

Particulars	Absolute Value (₹)
Revenue from Operations	20,00,000
Cost of Materials Consumed	11,00,000
Employee Benefit Expenses	3,00,000
Other Expenses	1,00,000
Tax Rate Applicable	30% of Net Profit before Tax

Q.9 The partnership deed of a design firm (Partners P, Q, and R sharing 2:2:1) states that Interest on Capital should be allowed @ 9% p.a. Their fixed capital balances were ₹2,00,000, ₹2,00,000, and ₹1,00,000 respectively. At the end of the year, the accountant distributed the net profits of ₹1,50,000 without allowing any Interest on Capital. Pass the necessary single rectifying adjustment entry. 4

Q.10 Prepare Cash Flow Statement from the following information: 6

Particulars	31st March 2026 (₹)	31st March 2025 (₹)
I. Equity and Liabilities		
1. Shareholders' Funds: Share Capital	7,00,000	5,00,000
2. Reserves & Surplus (Surplus balance in P&L)	1,80,000	1,00,000
3. Non-Current Liabilities: Long-term Borrowings	1,50,000	2,00,000
4. Current Liabilities: Trade Payables	75,000	60,000
Total Liabilities	11,05,000	8,60,000
II. Assets		
1. Non-Current Assets: Fixed Tangible Assets (Net)	6,20,000	5,00,000
2. Non-Current Investments	1,20,000	80,000
3. Current Assets: Inventories	1,90,000	1,50,000
4. Cash and Cash Equivalents	1,75,000	1,30,000
Total Assets	11,05,000	8,60,000

Std. XII Worksheet 4

Additional Information

1. During the year, depreciation charged on Fixed Tangible Assets was ₹50,000.
2. Dividend paid to shareholders during the year was ₹30,000.
3. No non-current investments were sold during the operational window.

Subject: Economics

- Q1. Explain the currency authority function of Central Bank. (2)
- Q2. Explain lender of the last resort function of the Central Bank. (2)
- Q3. Explain the banker to the government function of the Central Bank. (2)
- Q4. Explain the meaning of Cash Reserve Ratio and Statutory Liquidity Ratio. (2)
- Q5. State three main functions of commercial bank. Explain any one of them. (2)
- Q6. Explain any two functions of a Central Bank. (3)
- Q7. What is bank rate policy? How does it work as a method of credit control? (3)
- Q8. What are open market operations? How do these work as a method of credit Control? (3)
- Q9. State three methods of credit control used by the Central Bank. (3)
- Q10. Explain any two main functions of commercial banks. (3)

Guidelines for Project Work in Economics (Class XII)

The objectives of the project work are to enable learners to:

- probe deeper into theoretical concepts learnt in classes XI and XII
- analyse and evaluate real world economic scenarios using theoretical constructs and arguments
- demonstrate the learning of economic theory
- follow up aspects of economics in which learners have interest
- develop the communication skills to argue logically

The expectations of the project work are that:

- learners will complete only ONE project in each academic session
- project should be of 3,500-4,000 words (excluding diagrams & graphs), preferably hand-written
- it will be an independent, self-directed piece of study

Scope of the project:

Learners may work upon the following lines as a suggested flow chart:

Choose a title/topic

Collection of the research material/data

Organization of material/data

Present material/data

Analysing the material/data for conclusion

Draw the relevant conclusion

Presentation of the Project Work

Expected Checklist:

- Introduction of topic/title
- Identifying the causes, consequences and/or remedies
- Various stakeholders and effect on each of them
- Advantages and disadvantages of situations or issues identified
- Short-term and long-term implications of economic strategies suggested in the course of research
- Validity, reliability, appropriateness and relevance of data used for research work and for presentation in the project file
- Presentation and writing that is succinct and coherent in project file
- Citation of the materials referred to, in the file in footnotes, resources section, bibliography etc.

Mode of presentation/submission of the Project:

S. No.	Heading	Marks Allotted
1.	Relevance of the topic	3
2.	Knowledge Content/Research Work	6
3.	Presentation Technique	3
4.	Viva-voce	8

Total 20 Marks

Class XII

- Micro and Small Scale Industries Food Supply Channel in India
- Contemporary Employment situation in India Disinvestment policy of the government
- Goods and Services Tax Act and its Impact on GDP
- Health Expenditure (of any state)
- Human Development Index Inclusive Growth Strategy
- Self-help group Trends in Credit availability in India
- Monetary policy committee and its functions Role of RBI in Control of Credit
- Government Budget & its Components Trends in budgetary condition of India
- Exchange Rate determination – Methods and Techniques
- Currency War – reasons and repercussions
- Livestock – Backbone of Rural India Alternate fuel – types and importance
- Sarwa Siksha Abhiyan – Cost Ratio Benefits Golden Quadrilateral- Cost ratio benefit
- Minimum Support Prices Relation between Stock Price Index and Economic Health of Nation
- Waste Management in India – Need of the hour
- Minimum Wage Rate – approach and Application
- Digital India- Step towards the future Rain Water Harvesting – a solution to water crises
- Vertical Farming – an alternate way Silk Route- Revival of the past
- Make in India – The way ahead Bumper Production- Boon or Bane for the farmer
- Rise of Concrete Jungle- Trend Analysis Organic Farming – Back to the Nature
- Any other newspaper article and its evaluation on basis of economic principles
- Any other topic

Subject: History

General Instructions:

- All questions are compulsory.
- Answer the questions in sequence.
- Marks are indicated against each question.
- Answers should be written according to word limit.

No. of questions: 10

M.M. 25

- Q1. Under the critical leadership of which eminent Indian Sanskritist did the preparation of the Monumental Critical Edition of the Mahabharata begin in 1919? 1
- (A) R.G. Bhandarkar
(B) V.S. Sukthankar
(C) K.A. Nilakanta Sastri
(D) D.D. Kosambi
- Q2. According to the strict dictates of the Dharmashastras, the domestic practice where a woman marries a single husband inside her own local kin group is designated as: 1
- (A) Exogamy
(B) Endogamy
(C) Polygyny
(D) Polyandry
- Q3. The dynamic 'Purusha Sukta' hymn, which explicitly outlines the divine creation and hierarchy of the four varnas, is found in which ancient text? 1
- (A) Rigveda
(B) Manusmriti
(C) Bhagavad Gita
(D) Upanishads
- Q4. Which famous Satavahana king publicly asserted his identity as both a unique Brahmana and a fierce destroyer of the pride of the Kshatriyas? 1
- (A) Simuka
(B) Gautamiputra Satakarni
(C) Vashishtaputra Pulumavi
(D) Sri Satakarni
- Q5. According to ancient Brahmanical texts, the unique resource-wealth category known as 'Stridhana' explicitly refers to which of the following items? 1
- (A) Joint family agricultural estates
(B) Gifts received by a woman at the time of her marriage

Std. XII Worksheet 4

- (C) Royal property inherited by elite queens
- (D) Taxes paid exclusively by female traders

- Q6. Explain the primary distinction between the concepts of Varna and Jati as defined in early Brahmanical social codes. 3
- Q7. Analyze the social position, domestic functions, and legal restrictions imposed upon the 'Chandalas' by the Manusmriti. 3
- Q8. How did non-Brahmanical religious traditions, particularly Buddhism, challenge the rigid Brahmanical framework of social hierarchy and caste status? 3
- Q9. Discuss the exceptional case of the Satavahana dynasty regarding matrilineal and the structural rules of royal succession. 3
- Q10. Critically evaluate the rules of marriage, access to property, and gendered distinctions in early Indian society as documented in contemporary normative texts. 8

Subject: Political Science

Objective: - To enable the students to know about the inventions of new concepts in world politics and constitution of India.

- To develop 21st century managerial skills of co-ordination, self-direction and time management.
- To understand contemporary political issues in context to our past.
- To develop a global perspective and an international outlook.

Research Activity: - Research and collect the information on recent revolution of political ideas in the world and India, in the following areas.

- Comparison between NITI Aayog and Planning Commission and their contribution in India's Development.
- Health Epidemic – A new source of security threat

Assignment: - Project Work

Project Ideas

- Various media platforms used during political campaigns.
- One Nation, One Election: Pros and Challenges
- Right to Information (RTI) and Transparency
- Digital Governance and E-Governance in India
- Citizenship Amendment Act (CAA) Debate and Public Opinion
- Strategic planning of Indian Policy Makers.
- Russia-Ukraine War and Its Impact on India
- Human Rights acts and its ratification in India.
- Refugee Crisis and International Human Rights
- Political Impact on Indian Legislations.
- Political Impact on India's international standing.
- AI and Democracy
- Indian political stand on United Nations General Assembly 2022.
- Relevance of SAARC as a forum of regional cooperation.
- Division of Germany with special focus on the construction and dismantling of the Berlin wall.
- CIS- Central Asian Republics.
- Arab Spring
- Crisis in Middle East with special focus on Operation Desert Storm, Operation Iraqi Freedom, Iraq today.
- European Union and BREXIT.
- BRICS
- India's Nuclear Policy.
- U.S. dominance in World politics in the Post-Cold War era.
- India's role in Non Aligned Movement.
- Civil Society Movements - Role and participation in India.
- Relevance of the United Nations in a Unipolar World.
- Understanding Resource Geopolitics and Environment degradation

Std. XII Worksheet 4

- India's external relations -Critical analysis of the foreign policy of India especially with its immediate neighbours (Pakistan, China, Srilanka, Nepal, Myanmar)
- Popular movements in the Post-Independence era and their outcomes.
- Project on the role played by the regional aspirations in backing the secessionist and insurgency movement in India
- India's response to ASEAN as a dialogue partner.

GUIDELINES FOR THE PROJECTS:

- It must be emphasized that the process of doing the project is as important as the final project.
- Once the project/projects are chosen, there should be a process of brainstorming to make out a draft/structure for the project before embarking on research.
- Internet sites could be referred, but care must be taken in selecting, using and citing these sites.
- Avoid plagiarism
- Marks to be awarded for content and originality and not for decorative elements and embellishments.
- Projects must be the original work of the student.
- Project may be supported by- Data, fact sheets, maps, articles, newspaper clips
- Maximum of 25-30 page projects.

- Q.1 State two arenas of Cold War along with example of each. 2
- Q.2 What is Globalisation? 2
- Q.3 Mention the kinds of reforms that the UN is facing today. 2
- Q.4 What is security? 2
- Q.5 Which two republics had violent secessionist movements in Russia? 3
- Q.6 What is NATO and when it was established? 3
- Q.7 What do you understand by the 'bandwagon' strategy? 3
- Q.8 What are the objectives of ASEAN Economic Community? 3
- Q.9 Write a short note on Belgrade summit. 5
- Q.10 Describe arm control treaties. 5

Subject: Geography

Dear students,

Your summer holiday homework is divided into 3 parts

1. Completion of map file

2. Completion of Practical record file

3. Four worksheet (to be done in geography note book)

No. of questions: 10

M.M. 25

Answer the following questions

- Q1. Which of the following is the oldest economic activity known to mankind? 1
- A) Nomadic herding
 - B) Hunting and gathering
 - C) Commercial grain farming
 - D) Mixed farming
- Q2. In which type of agriculture is the yield per acre high, but the yield per worker low? 1
- A) Intensive subsistence agriculture
 - B) Extensive commercial grain cultivation
 - C) Plantation agriculture
 - D) Mediterranean agriculture
- Q3. Which of the following regions is famous for viticulture (grape cultivation)? 1
- A) The Pampas of Argentina
 - B) The Mediterranean region
 - C) The Canadian Prairies
 - D) The Velds of South Africa
- Q4. What is the main cause of land degradation in the irrigated areas of Punjab and Haryana? 1
- A) Soil erosion by water
 - B) Overgrazing
 - C) Salinisation and alkalisation of soil
 - D) Deforestation
- Q5. Cultivating a single crop on a massive scale using high capital and scientific methods is known as: 1
- A) Shifting cultivation
 - B) Mixed farming
 - C) Plantation agriculture
 - D) Market gardening

Std. XII Worksheet 4

- Q6. Distinguish between nomadic herding and commercial livestock rearing based on their primary goals. 3
- Q7. Define the term 'fallow land' and state its agricultural importance. 3
- Q8. Explain three distinct characteristics of Mediterranean agriculture that make it unique and highly profitable.
- Q9. Discuss how institutional problems like small landholding sizes hamper agricultural productivity in developing nations like India. 3
- Q10. Analyze the major technological and socio-economic problems faced by Indian agriculture. Suggest any two measures to resolve them. 5

Subject: Informatics Practices**Q1 Case Study 1 – School Network Setup**

(1x5=5)

A senior secondary school in Delhi is planning to set up a computer network connecting its different departments: Administration, Computer Lab, Library, and Accounts Office. The Administration department has 25 computers, the Computer Lab has 80 computers, the Library has 20 computers, and the Accounts Office has 15 computers. The distance between Administration and Computer Lab is 50 meters, Administration and Library is 70 meters, Administration and Accounts Office is 90 meters, Computer Lab and Library is 35 meters, and Library and Accounts Office is 30 meters. The school also has another branch in Jaipur located 280 kilometers away from Delhi. The school wants to ensure efficient communication, resource sharing, internet connectivity, and centralized data management among all departments and branches.

Number of Computers in Each Department

Department	Number of Computers
Administration	25
Computer Lab	80
Library	20
Accounts Office	15

Distance Between Departments

From Department	To Department	Distance (meters)
Administration	Computer Lab	50
Administration	Library	70
Administration	Accounts Office	90
Computer Lab	Library	35
Library	Accounts Office	30

Distance Between School Branches

Branch	Location	Distance
Main School	Delhi	—
School Branch	Jaipur	280 km

- I. Suggest the most suitable department to install the server. Give reason.
- II. Suggest a suitable cable layout for connecting the departments.
- III. Which networking device should be used to connect computers within each department?
- IV. Which type of network should be used between Delhi and Jaipur branches?
- V. Which device can be used to strengthen weak signals in long-distance transmission?

Q2 Case Study 2 – Hospital Management Network

(1x5=5)

A multi-speciality hospital in Mumbai wants to establish a network among its departments including Reception, Pharmacy, Billing Section, and Laboratory. The Reception has 20 computers, Pharmacy has

25 computers, Billing Section has 40 computers, and Laboratory has 60 computers. The distance between Reception and Pharmacy is 45 meters, Pharmacy and Billing Section is 30 meters, Billing Section and Laboratory is 40 meters, and Reception and Laboratory is 90 meters. The hospital also operates a branch in Pune located 170 kilometers away. The hospital management wants smooth sharing of patient records, online billing, and centralized database management.

Number of Computers in Each Department

Department	Number of Computers
Reception	20
Pharmacy	25
Billing Section	40
Laboratory	60

Distance Between Departments and Branch

Connection	Distance
Reception – Pharmacy	45 m
Pharmacy – Billing Section	30 m
Billing Section – Laboratory	40 m
Reception – Laboratory	90 m
Mumbai Hospital – Pune Branch	170 km

- I. Which department is the best location for installing the server?
- II. Draw the suitable cable layout.
- III. Which device should be used to connect computers inside each department?
- IV. Suggest the appropriate network type between Mumbai and Pune branches.
- V. Which device is used to regenerate weak signals?

Q3 Case Study 3 – Banking Network

(1x5=5)

A nationalized bank is planning to connect its departments namely Customer Service, Loan Department, Accounts Department, and Manager Cabin through a secure computer network. The Customer Service department has 35 computers, Loan Department has 30 computers, Accounts Department has 50 computers, and Manager Cabin has 10 computers. The distance between Customer Service and Loan Department is 25 meters, Loan Department and Accounts Department is 30 meters, and Accounts Department and Manager Cabin is 20 meters. The bank also has another branch in Chandigarh located 260 kilometers away from the head office in Delhi. The network should support secure transactions, centralized account management, and online customer services.

Number of Computers in Each Department

Department	Number of Computers
Customer Service	35
Loan Department	30
Accounts Department	50
Manager Cabin	10

Distance Between Departments and Branch

Connection	Distance
Customer Service – Loan Department	25 m
Loan Department – Accounts Department	30 m
Accounts Department – Manager Cabin	20 m
Delhi Head Office – Chandigarh Branch	260 km

- I. Suggest the most suitable department for server installation.
- II. Suggest a cable layout.
- III. Which device should be used to connect computers within departments?
- IV. Which network type should be used between Delhi and Chandigarh branches?
- V. Which device helps in boosting weak signals?

- Q4 What is the purpose of a server in a network? (1)
- Q5 What is a switch? Write its function. (1)
- Q6 What is a repeater? Why is it used? (1)
- Q7. Differentiate between hub and switch. (1)
- Q8 What is the use of communication media in networking? (2)
- Q9 What is an IP address? Give an example (2)
- Q10 Why is network security important? (2)

Subject: Psychology

No. of questions: 10

M.M. 25

- Q1. Define self. 1
- Q2. In value assessment, we try to determine the _____ values of a person. 1
- Q3. Define personality. 2
- Q4. Confident people can solve problems, confront the things that frighten them and nurture themselves are all qualities of which Behavioural aspect of self. Write a note on it. 2
- Q5. Rita is learning music. Many times, she has to miss her favourite serial as she has to go for music classes. Also, she wakes up early to practice despite her love her sleep. Which concept from the chapter, self and personality, can you link to this situation? 2
- Q6. Which concept of self is based on Bandura’s social learning theory? Write a note on it. 2
- Q7. If a psychologist is evaluating you by asking your response to ink blots, which form of assessment is the psychologist using? List any two features of this form of assessment. 3
- Q8. Is there a difference between self-actualisation and a fully functioning individual? Support your answer with the help of examples. 4
- Q9. Distinguish between the type and trait approach of personality. Give suitable examples. 4
- Q10. What is meant by delay in gratification? Discuss the technique used for self-control. 4

Activity: Understanding self:

Please complete the following sentences starting with “I am”

Time now: _____

I am _____

I am _____

I am _____

I am _____

I am _____

I am _____

I am _____

I am _____

I am _____

I am _____

Time when you finished _____.

Subject: Physical Education

- | | |
|--|---|
| Q1. What are the causes of Bow leg? | 1 |
| Q2. Write a short note on benefits of participation in sport. | 1 |
| Q3. What do you mean by correct posture? | 1 |
| Q4. Discuss about the precautions and causes of Flat feet. | 1 |
| Q5, Briefly write about physical activities/exercises guidelines for adults above 65 of age. | 2 |
| Q6. Describe the importance/need of extramural | 3 |
| Q7. Explain the various constraints faced by women in sports. | 3 |
| Q8. What is league tournament? Explain the types, merits, and demerits of league tournament? | 3 |
| Q9. What do you mean by planning? Elucidate the objectives of planning in sports in detail. | 5 |
| Q10. Draw a knockout fixture of 13 teams. | 5 |

Subject: Home Science

No. of questions: 10

M.M. 25

- Q1. Choose the correct option: (1)
A clinical dietitian mainly works in:
i) Factories
ii) Hospitals and health centres
iii) Banks
iv) Transport sector
- Q2. Define clinical nutrition. (2)
- Q3. State any two responsibilities of a clinical dietitian. (2)
- Q4. What is a therapeutic diet? (2)
- Q5. Mention any four types of modified diets. (2)
- Q6. Why is proper nutrition important during illness? (2)
- Q7. Describe any three precautions to be followed while planning a diet for sick individuals. (3)
- Q8. Discuss the importance of diet modification in disease management. (3)
- Q9. Explain any three factors considered while planning diets for patients. (3)
- Q10. Activity-based: (5)

Prepare a one-day diet plan for any one of the following conditions:

- Diabetes
- Hypertension
- Anaemia
- Obesity

Include:

- Breakfast
- Lunch
- Dinner
- Snacks
- Special dietary precautions to be followed.

Subject: Painting

Q1- Describe the painting Krishna with Gopis

(10)

Mention Artist, period, sub -school, medium, size, subject matter, description and colour scheme

Q2 - Choose the correct option

(1x10=10)

1. The Pahari School of Painting mainly developed in:

- a) Rajasthan
- b) Punjab Hills
- c) Gujarat
- d) Bengal

2. Pahari paintings were greatly influenced by:

- a) Mughal style
- b) European style
- c) Persian carpets
- d) Modern art

3. Which of the following is a famous centre of Pahari painting?

- a) Kangra
- b) Ajanta
- c) Madurai
- d) Mysore

4. The Kangra style of painting is especially known for:

- a) Bold geometric forms
- b) Romantic themes and natural beauty
- c) Abstract figures
- d) War scenes

5. Which ruler patronized the Kangra School of Painting?

- a) Raja Sansar Chand
- b) Akbar
- c) Shivaji
- d) Krishnadevaraya

6. The main themes of Pahari paintings are based on:

- a) Industrial life
- b) Mythology and love stories
- c) Political events
- d) Modern cities

7. Basohli style of Pahari painting is known for:

Std. XII Worksheet 4

- a) Delicate colours
 - b) Bold colours and strong lines
 - c) Cubism
 - d) Realistic portraits
8. Which literary work inspired many Pahari paintings?
- a) Arthashastra
 - b) Gita Govinda
 - c) Ain-i-Akbari
 - d) Panchatantra
9. In Pahari paintings, Lord Krishna is often shown with:
- a) Warriors
 - b) Radha and Gopis
 - c) Kings and queens
 - d) Saints only
10. Which style is considered the most lyrical and graceful among Pahari paintings?
- a) Mughal style
 - b) Basohli style
 - c) Kangra style
 - d) Deccan style