



St. Mary's School, Dwarka

Holiday Homework 2026

Class: X

Worksheet 2

Subject: English

No. of questions: 9

M.M. 25

General Instructions:

- 1) The work should be done neatly and systematically.**
- 2) The questions given are to be done in your respective subject notebooks.**
- 3) Attempt all questions**

Q1. Read the following passage.

1. Over the past twenty-five years, modern classrooms have undergone a remarkable transformation owing to technological advancements. Instead of relying on a single shared computer or laboratory, students now have direct access to digital devices at their desks. Consequently, technology has significantly enriched and personalised the learning experience.
2. Technology helps children to stay motivated during the learning process. Most students don't like to go to school if they feel like they are wasting their time. When technology is allowed in the classroom, teachers have an opportunity to let children work at a pace that suits them best without disturbing others. They can look up additional information about a subject they are learning about that day, play educational games that reinforce the lesson, or work on advanced material using a program.
3. Since the technology options available today allow students to see how well they are doing compared to the average user, it gives them a chance to push harder to achieve their academic goals. Technology encourages more communication between teachers and parents. Using a blog for the classroom can help parents get to see what their children are learning each day. Apps and software options allow teachers to instantly report on a child's behaviour to let parents know in real-time what is happening throughout the day. There are options for chat boxes, instant messaging, and other forms of communication as well.
4. Technology also creates new ways to learn for today's student. There are three critical forms of intelligence that we see in children today: emotional, creative, and instructional. The traditional classroom environment, which typically encourages lecture-based lessons, focuses more on the latter option. Standardised tests and similar ranking tools do the same. When children have access to technology today, those who excel outside of the standard learning setup can still achieve their full potential.

Std. X Worksheet 2

5. Technology allows children to embrace their curiosity in multiple ways. They can try new things without embarrassment because their tech access gives them a level of anonymity. This process allows children to work, through trial-and-error if they wish, to see if a different strategy helps them to learn more effectively. Some children will transform into mentors or leaders in this situation to help their fellow students, but there are many more who disengage because they lack stimulation. By introducing technology to the classroom, there are fewer places where repetitive learning must occur. Teachers can introduce new subjects, try new techniques, or use different projects to encourage ongoing learning, which creates more overall engagement.

Based on your understanding of the passage, attempt the questions given below. (1x5=5)

- i. According to the passage, most children don't like to go to school if they _____. (1)
- (a) don't understand what is being taught in class
 - (b) perceive their time to be unproductive
 - (c) find the class too boring
 - (d) can get away with it
- ii. What is the advantage of having a technology that allows students to see how well they are doing compared to the average of other students? (1)
- iii. Complete the following analogy correctly with a word/ phrase from the above passage: (1)
teachers: classroom :: - _____ : computer
- (iv) Which of the following is NOT a way through which technology helps children to stay (1)
motivated during the learning process?
- (a) play educational games that reinforce a lesson
 - (b) work on advanced material using a program
 - (c) look up additional information about a subject they are learning about
 - (d) allows them to work on a lesson beyond their curriculum
- (v) Choose an option that makes the correct use of 'stimulation as used in the passage, to fill in space. (1)
- (a) Babies who love their parents receive much more _____ than babies who sleep in a cot.
 - (b) It was known that _____ made the heart to increase its oxygen consumption.
 - (c) Near the boundary, the electrical _____ spreading enough to evoke both movements.
 - (d) She has a low threshold of boredom and needs the constant _____ of physical activity.
- Q2. You are Karan/Kanika of St. John School, New Delhi. Your school is interested in visiting the National Science Museum, Pragati Maidan, next week. Write a letter to the Director inquiring about the guide, tickets, activities, timings, etc. Invent other necessary details. (3)

Std. X Worksheet 2

Q3. i. Read the conversation between a father and his son. Complete the statement by reporting the son's reply correctly. (1/2 x4=2)

Father: Don't you have to go to the cricket class today? It's already five o'clock. (1/2)

Son: It rained the whole night yesterday, father; The field must be wet.

Father reminded his son that it was already five o'clock. He also enquired if he didn't have to go to his cricket class that day. The son replied, stating _____

ii. Select the correct option to fill in the blank for the given line. (1/2)

We _____ eat fast food every night. It's not healthy.

- (a). may not (b). might not (c). should not (d). shall not

iii. Complete the given narrative by filling in the blank with the correct option: (1/2)

Looking back at the photo album, Sarah realized how much _____ since their childhood vacation.

- (a). they had grown (b). they grew (c). they have grown (d). they grown

iv. Select the option that identifies the error and supplies the correction for the following line, from a news report: (1/2)

While exploring the Amazon rainforest, the researchers documented a variety of different plant and animal species.

Option Nos.:	Error	Correction
A.	exploring	had explored
B.	a	an
C.	while	when
D.	different	unique

Q4. i. Fill in the blank by using the correct form of the word in the bracket, for the given portion of an email: (1/2 x4=2)

Dear Ms Awasthi, (1/2)

Thank you for your prompt response. I have attached the document that _____ (describe) the key features of the new marketing strategy for your review.

Std. X Worksheet 2

ii. Sonia and Raj discussed the upcoming charity event. Report Raj's question. (1/2)

Are you going to coordinate the event with your team?

iii. Fill in the blank by choosing the correct option to complete the sentence: (1/2)

Kindly inform the committee _____ which/ where/what recommendations should be prioritised before the final presentation.

iv. Complete the given narrative by filling in the blank with the correct option. (1/2)

Her involvement in the community service project made her _____ aware of the various challenges faced by underprivileged families.

- a. becoming
- b. been
- c. become
- d. becomes

Answer the following questions in about 40 words. (2 x 3 =6)

Q5. Why did Nelson Mandela perceive freedom as a collective human right rather than an individual privilege?

Q6. What emotions does the poet evoke through the nocturnal movements and behaviour of the tiger in the poem 'A Tiger in the Zoo'?

Q7. What message does the poet want to convey through the poem 'The Dust of Snow'.

Answer the following questions in 80 words: (3)

Q8. "He had never been known to refuse food; he would tackle a meal at any hour of the day or night." In the light of A Triumph of Surgery, what essential values and habits should Tricky cultivate to lead a healthier and more disciplined life? Elaborate.

Q9. Project Work on Tiger Conservation (4)

The students are required to do this in a scrapbook

Parameters

1. Research Content
2. Understanding of the Issue
3. Visual Presentation- analysis (mathematics and statistics integration)
4. Threats faced by the tigers and how to protect them

Subject: Hindi

No. of questions: 10

M.M. 25

प्रश्न 1 निम्नलिखित गद्यांश पर आधारित प्रश्नों के उत्तर उचित विकल्प चुनकर दीजिए:**(1×5=5)**

‘शासन’ शब्द में ‘अनु’ उपसर्ग लगाने से अनुशासन शब्द बना है, जिसका अर्थ है- शासन के पीछे अनुगमन करना, शासन के पीछे चलना अर्थात् समाज और राष्ट्र द्वारा बनाए गए नियमों का पालन करते हुए मर्यादित आचरण करना अनुशासन कहलाता है। अनुशासन का पालन करने वाले लोग ही समाज और राष्ट्र को उन्नति के पथ पर ले जाते हैं। इसी तरह अनुशासनहीन नागरिक ही किसी राष्ट्र के पतन का कारण बनते हैं। अनुशासन की आवश्यकता सभी उम्र के लोगों को जीवन में कदम-कदम पर होती है। छात्र जीवन, मानवजीवन की रीढ़ होता है। इस काल में सीखा हुआ ज्ञान और अपनाई हुई आदतें जीवन भर काम आती हैं। इस कारण छात्र जीवन में अनुशासन की आवश्यकता और भी बढ़ जाती है। अनुशासन के अभाव में छात्र प्रकृति प्रदत्त शक्तियों का न तो प्रयोग कर सकता है और न ही विद्यार्जन के अपने दायित्व का भली प्रकार निर्वाह कर सकता है। छात्र ही किसी देश का भविष्य होते हैं, अतः छात्रों का अनुशासनबद्ध रहना समाज और राष्ट्र के हित में होता है। कुछ तो सरकारी नीतियाँ छात्रों को अनुशासनविमुख बना रही हैं और कुछ दिन-प्रतिदिन मानवीय मूल्यों में आती गिरावट छात्रों को अनुशासनहीन बना रही है। इसके अलावा अनुशासन के मायने बदलने से भी छात्रों में अब पहले जैसा अनुशासन नहीं दिखता है। इस कारण प्रायः स्कूलों और कॉलेजों में हड़ताल, तोड़-फोड़, बात-बात पर रेल की पटरियों और सड़कों को बाधित कर यातायात रोकने का प्रयास करना आमबात होती जा रही है। छात्रों में मानवीय मूल्यों की कमी कल के समाज के लिए चिंता का विषय बनती जा रही है।

(i) अनुशासनहीन नागरिक किसका कारण बनते हैं?

- (क) उन्नति
- (ख) विकास
- (ग) पतन
- (घ) सम्मान

(ii) छात्र जीवन को क्या कहा गया है?

- (क) खेल का समय
- (ख) मानव जीवन की रीढ़
- (ग) विश्राम काल
- (घ) मनोरंजन काल

(iii) निम्नलिखित कथन (A) तथा कारण (R) को ध्यानपूर्वक पढ़कर उचित विकल्प का चयन कीजिए—
कथन (A) - अनुशासन मानव जीवन के लिए आवश्यक है।

कारण (R) - अनुशासन से व्यक्ति मर्यादित आचरण करना सीखता है।

(क) कथन और कारण दोनों सही हैं तथा कारण, कथन की सही व्याख्या करता है।

(ख) कथन और कारण दोनों सही हैं पर कारण, कथन की सही व्याख्या नहीं करता।

(ग) कथन सही है पर कारण गलत है।

(घ) कथन गलत है पर कारण सही है।

(iv) छात्र जीवन में अनुशासन की आवश्यकता क्यों होती है?

(v) अनुशासन के अभाव में छात्र क्या नहीं कर सकता?

निम्नलिखित प्रश्नों के उत्तर निर्देश के अनुसार दीजिए: : (1×5 = 5)

प्रश्न 2 स्वागतार्थ आए हुए लोगों से घिर हुए श्रीकृष्ण ने नगर में प्रवेश किया। वाक्य में संज्ञा पदबंध क्या है?

प्रश्न 3 धरती का पानी सूखता चला गया। वाक्य में क्रिया पदबंध कौन-सा है ?

प्रश्न 4 ' वर्षा होने पर मोर नाचते हैं।' इस वाक्य का उचित मिश्र वाक्य रूप क्या होगा?

प्रश्न 5 मोहन ने रवि से कहा कि तुम माता पिता की मेहनत की कमाई क्यों बरबाद कर रहे हो ? रेखांकित शब्दों के स्थान पर किस मुहावरे का प्रयोग किया जाएगा?

प्रश्न 6 'सुध-बुध खोना' मुहावरे का अर्थ लिखकर वाक्य में प्रयोग कीजिए।

प्रश्न 7 निम्नलिखित प्रश्नों के उत्तर दीजिए — (1½×2 = 3)

(क) मनुष्यता कविता में कवि ने सभी को एक साथ होकर चलने के लिए प्रेरणा क्यों दी है ? इससे समाज को क्या लाभ हो सकता है? स्पष्ट कीजिए।

(ख) पुलिस कमिश्नर द्वारा निकाली गई नोटिस का कथ्य स्पष्ट करते हुए बताइए कि यह नोटिस क्यों निकाली गई होगी? इसकी अवलोकना करना क्या उचित था , तो क्यों ?

प्रश्न 8 निम्नलिखित प्रश्न का उत्तर दीजिए — (2×1=2)

जिन यंत्रणाओं के बीच वह घिरे थे और जिस मनः स्थिति में जी रहे थे, उसमें आँखें ही बहुत कुछ कह देती हैं, मुँह खोलने की जरूरत नहीं पड़ती। हरिहर काका की पंद्रह बीघे ज़मीन उनके लिए जी का जंजाल कैसे बन गई? कथन के आलोक में अपने विचार व्यक्त कीजिए।

Std. X Worksheet 2

प्रश्न 9 आप नई दिल्ली में रहने वाले राधा/राम है। आप सीमापुरी के सरकारी विद्यालय में दसवीं कक्षा में पढ़ते या पढ़ती हैं और आपके विद्यालय के पुस्तकालय में विषय से संबंधित पुस्तकों का अभाव है अतः पुस्तकों को मंगाने का आग्रह करते हुए अपने विद्यालय के प्रधानाचार्य को लगभग 100 शब्दों में प्रार्थना-पत्र लिखिए। (5×1=5)

गतिविधि :

प्रश्न 10 कलकत्ता शहर की सांस्कृतिक एवं ऐतिहासिक विशेषताओं को चित्रसहित दर्शाते हुए एक मैगजीन होल्डर बनाइए। (5×1=5)

Subject: Mathematics

General Instructions:

- 1) The work should be done neatly and systematically.
- 2) The questions given are to be done in your Math notebook.
- 3) Attempt all questions

No. of questions: 10

M.M. 25

Q-1 Express 3825 and 7429 as a product of its prime factors: (1)

Q-2 Given that $HCF(306, 657) = 9$, find $LCM(306, 657)$. (2)

Q-3 The following real numbers have decimal expansions as given below. In each case, decide whether they are rational or not. If they are rational, and of the form, p/q what can you say about the prime factors of q ? (2)

(i) 43.123456789

(ii) 0.120120012000120000...

Q-4 Check whether 6^n can end with the digit 0 for any natural number n . (2)

Q-5. Find HCF and LCM of 13 and 17 by prime factorisation method. (2)

Q-6. Prove that $2 + 3\sqrt{5}$ is an irrational number. (3)

Q-7 What type of lines are represented by the following pair of linear equations. Verify your answer by representing on the graph. $2x = 5y + 6$ and $15y = 6x - 18$. (3)

Q-8. Half the perimeter of a rectangular garden, whose length is 4 m more than its width, is 36 m. Find the dimensions of the garden. (3)

Q-9 Prove that $2\sqrt{3} - 1$ is an irrational number. (3)

Q-10 In a pool at an aquarium, a dolphin jumps out of the water travelling at 20 cm per second. Its height above water level after t seconds is given by $h = 20t - 16t^2$.



Based on the above, answer the following questions :

(1+1+2)

- i) Find zeroes of polynomial $p(t) = 20t - 16t^2$
- ii) what would be the value of h at $t = 3/2$? find result
- iii) How much distance has the dolphin covered before hitting the water level again?

Fun Activity:

Secret Number Quest

Players: 2 or more

In this activity, one player will draw the table with columns for one digit number and think of a number that can come in this table. But cannot share this with their respective partners. The other partner will guess the number which will come to the table, which should be the same as thought by the other player. If his guess is correct, then he will be the winner.

Subject: Science

No. of questions: 10

M.M. 25

Instructions:

- * Neatly write the answers in your fair notebook.
- * Attempt the questions keeping in mind the weightage of each question.

Q1. During an eye check-up camp, a doctor showed students different corrective lenses used in spectacles. One of the lenses had a focal length of 0.25 m. The doctor asked the students to identify the type of lens. Which of the following statement correctly describes the lens?

- (a) A convex lens has power +4 D and focal length 0.25 m (1)
- (b) A convex lens has power -4 D and focal length -0.25 m
- (c) A concave lens has power +4 D and focal length 0.25 m
- (d) A concave lens has power -4 D and focal length -0.25 m

Q2. What is the ratio of average amount of energy absorbed by producers to the average amount of energy absorbed by primary consumers? (1)

- A. 1:2
- B. 2:1
- C. 1:10
- D. 10:1

Q3. **Assertion (A):** Ozone layer depletion directly increases the amount of biodegradable waste in the environment. (1)

Reason (R): The ozone layer protects living organisms from harmful ultraviolet radiation.

- A. Both A and R are true, and R is the correct explanation of A.
- B. Both A and R are true, but R is not the correct explanation of A.
- C. A is true, but R is false.
- D. A is false, but R is true.

Q4. The refractive indices of three media are given below. A ray of light is travelling from A to B and another ray is travelling from B to C. (2)

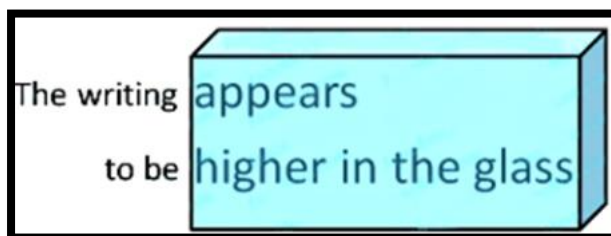
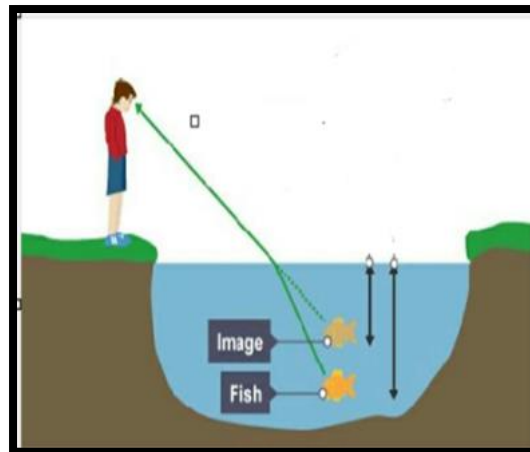
Medium	Refractive Index
A	1.6
B	1.8
C	1.5

- (a) In which of the two cases the refracted ray bends towards the normal?
- (b) In which case does the speed of light increase in the second medium? Justify!

Std. X Worksheet 2

Q5. Explain why an aqueous solution of sodium sulphate is neutral while an aqueous solution of sodium carbonate is basic in nature. Support your answer with chemical equations. (2)

Q6. The pictures below show some common situations observed in daily life. Name the optical phenomenon responsible for all the cases and explain the reason behind each observation. (3)

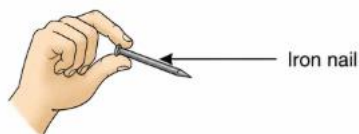
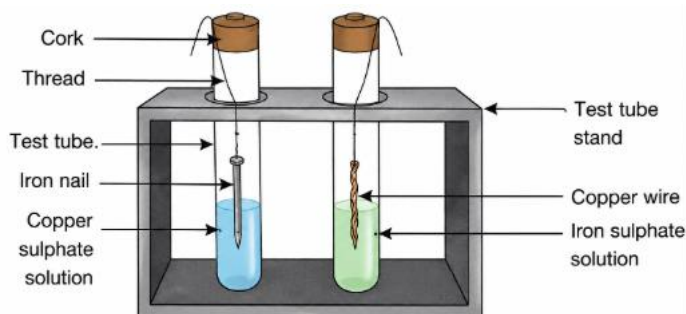


Q7. Kabir sets up two test tubes to study the reaction of metals with salt solutions. In test tube A, he places a clean copper wire in iron sulphate solution. In test tube B, he places a clean iron nail in copper sulphate solution. After 20 minutes, he carefully observes both test tubes.

(i) In which test tube did a chemical reaction occur? Name the type of chemical reaction.

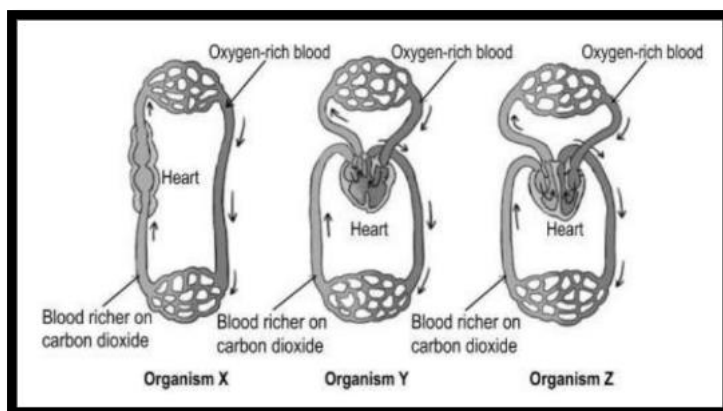
(ii) Write the balanced chemical equation for the reaction that took place.

(iii) State two observations that indicate that a chemical reaction has occurred. (3)



Std. X Worksheet 2

Q8. Shown below are the diagrammatic representations of the circulatory systems of three organisms X, Y, and Z.



- A. Identify which organism is a fish. Give a reason for your answer. (1+2=3)
- B. Identify the organism(s) that does/do NOT require energy to maintain their body temperature.

Q9. During a school Science exhibition, Riya placed a decorative flower vase 12 cm in front of a concave mirror used for a light display. The height of the vase was 3 cm and the focal length of the mirror was 18 cm. (2+1+1)

- (a) Determine the position of the image (flower vase) formed by:
- drawing a ray diagram
 - using the mirror formula
- (b) Calculate the height of the image (flower vase) formed.

Q10. Research diabetes and investigate how eating habits and exercise affect this condition.

Collect information from reliable sources and prepare a short report. (5)

Food/Lifestyle Habit	Effect on Blood Sugar Level
Sugary Drinks	_____
Regular Exercise	_____
Balanced Diet	_____
Processed Foods	_____

Answer the following questions:

- Which organ helps regulate blood sugar in the body?
- Which hormone controls blood glucose levels?
- Why is exercise recommended for diabetic patients?
- Write two conclusions from your research regarding healthy nutrition.

Subject: Social Science

No. of questions: 10

M.M. 25

- Q1. Define National resources and Individual resources? (1)
- Q2. Why was the Khilafat movement started? (1)
- Q3. In which novel was the hymn 'Vande Mataram' included, and who wrote the novel? (1)
- Q4. Describe the main features of the 'Poona Pact'. (2)
- Q5. How is Federalism practised in India? (3)
- Q6. What does the following cartoon represent? (3)



- Q7. A River Valley in India is being developed into a hydroelectric power plant. State the three steps of resource planning to achieve it. (3)
- Q8. A community is deciding whether to invest in more private services or improve public facilities like schools, hospitals, and transport. Based on your understanding, analyze the importance of public facilities and highlight any three major advantages they provide to people. (3)
- Q9. Does availability of good health and educational facilities depend only on the amount of money spent by the government on these facilities? What other factors could be relevant? (3)

Std. X Worksheet 2

Q10. Project Work: On A4 Sheets

Electoral Politics of West Bengal

Project Guidelines

Include the following points in their project:

1. Introduction to elections in West Bengal
2. Major political parties involved
3. Key issues raised during the elections
4. Role of voters and election campaigns
5. Participation of women and youth
6. Use of media and social media in campaigning
7. Challenges faced during elections
8. Conclusion: What do Bengal elections teach us about democracy?

Suggestions:

- * Use pictures, newspaper cuttings, charts, or maps
- * Add recent election data or slogans
- * Keep the project neat, informative, and creative

(5)

Subject: Artificial Intelligence

General Instructions:

- 1) The work should be done neatly and systematically.
- 2) The questions given are to be done in your AI notebook.
- 3) Attempt all questions

No. of questions: 10

M.M. 25

Q1. Multiple Choice Questions

(1×5=5)

1. Which stage comes first in AI Modelling?
 - a) Evaluation
 - b) Data Collection
 - c) Deployment
 - d) Testing
2. Train-test split is mainly used to:
 - a) Decorate data
 - b) Divide data for training and testing
 - c) Delete unwanted data
 - d) Store data online
3. Which type of data contains labels?
 - a) Unlabelled data
 - b) Random data
 - c) Labelled data
 - d) Duplicate data
4. A model that performs well on training data but poorly on new data suffers from:
 - a) Data cleaning
 - b) Overfitting
 - c) Modelling
 - d) Prediction
5. Which of the following is an example of AI Modelling?
 - a) Painting a wall
 - b) Predicting weather using past data
 - c) Writing with pen
 - d) Charging a mobile phone

Q2 Case Study: AI-Based Smart Traffic Management System

(1x4=4)

A city uses an AI-based smart traffic management system to reduce traffic congestion and improve road safety. The system collects data from CCTV cameras, traffic signals, GPS devices, and sensors installed on roads. Using this data, the AI predicts traffic density and automatically controls traffic lights to reduce waiting time.

The system also detects accidents and sends alerts to emergency services. However, during heavy rain and poor weather conditions, some cameras fail to capture clear images. Due to incomplete or unclear data, the AI sometimes makes wrong decisions, such as giving longer green signals to less crowded roads. This causes traffic jams and delays.

- a) Which type of AI learning is used in this system?
- b) What is the main reason for incorrect predictions?
- c) Suggest one improvement for the system.
- d) Mention one ethical issue involved in this case.

Q3. State any two advantages of Machine Learning. (2)

Q4. What problems can occur if Machine Learning is trained with poor data? (2)

Q5. Differentiate between Supervised Learning and Unsupervised Learning. (2)

Q6. What is classification in Machine Learning? Give one example. (2)

Q7. What is clustering? Mention one real-life application. (2)

Q8. How does Machine Learning help recommendation systems? (2)

Q9. Mention any two ethical concerns related to Machine Learning. (2)

Q10. Why is human supervision important in AI and Machine Learning systems? (2)

Subject: Home Science

General Instructions:

- 1) The work should be done neatly and systematically.
- 2) The questions given are to be done in your subject notebook.
- 3) Attempt all questions

No. of questions: 10

M.M. 25

- Q1.** What is time management? (1)
- a) Allocating time for various tasks effectively
 - b) Managing clocks and watches
 - c) Organizing events and meetings
 - d) None of the above
- Q2.** Which of the following is a strategy to overcome procrastination? (1)
- a) Setting unrealistic goals
 - b) Breaking tasks into smaller, manageable parts
 - c) Avoiding planning and scheduling
 - d) Ignoring deadlines
- Q3.** Which of the following is NOT a benefit of effective time management? (1)
- a) Reduced stress
 - b) Increased productivity
 - c) Poor work-life balance
 - d) Improved decision-making
- Q4.** Time management helps to get work done -. (1)
- a) costlier
 - b) better
 - c) slower
 - d) none of the above
- Q5.** Combining foods like rice and pulses or idli-sambhar can _____ its protein quality. (1)
- a) increase
 - b) decrease
 - c) no change
 - d) none of the above

Std. X Worksheet 2

Q6. Match List I with List II (1)

List I (Dishes)

List II (Nutrients)

A. Carrot Halwa

I. Carbohydrate

B. Vermicelli kheer

II. Protein

C. Channa Kebab

III. Calcium

D. Bread roll

IV. Vitamin A

Choose the correct option from the following-

a) A – III; B – IV; C- II; D – I

b) A – IV; B – III; C- II; D – I

c) A – II; B – III; C- IV; D –I

d) A –I; B –II; C-III; D – IV

Q7. Very short answer type questions- (5x1= 5)

I. Name any two factors affecting energy management.

II. Give some examples of light work.

III. Who suggested ‘classes of change’?

IV. What is the extra energy required to perform the task than resting level is called?

V. What is procrastination?

Q8. Short answer type questions- (2x2= 4)

I. Give some tips for Effective Time Management.

II. Define perishable and non-perishable foods with examples.

Q9. Prepare a time plan for yourself for one day by prioritizing your tasks in order and designate time accordingly to each task or activity. (5)

Q10. List down your daily chores under each category based on the amount of energy it takes you to complete the task and suggest the methods how you can balance these throughout day without feeling exhausted. (5)

Light work	Moderate work	Heavy work

Subject: Indian Music

General Instructions:

- 1) The work should be done neatly and systematically.
- 2) The questions given are to be done in your subject notebook.
- 3) Attempt all questions

No. of questions: 7

M.M. 10

- Q1. What is an Alankar? (1)
- Q2. Write one example of a simple Alankar. (1)
- Q3. Name one voice culture exercise. (1)
- Q4. Fill in the blank:
Alankars help in improving _____ of singing. (1)
- Q5. State whether true or false:
Breathing exercises are useful for singers. (1)
- Q6. Mention any two benefits of practicing Alankars daily. (2)
- Q7. Explain how voice culture exercises help a singer. (3)