



St. Mary's School, Dwarka

Holiday Homework 2026

Class: IX

Worksheet 3

Subject: English

General Instructions:

- 1) The work should be done neatly and systematically.
- 2) The questions given are to be done in your respective English notebook.
- 3) Attempt all questions.

No. of Questions: 9

M.M.: 25

Q1. Read the given passage and answer the questions that follow: (5)

The term “environmental apocalypse” is often used to describe a catastrophic future in which ecological destruction severely disrupts human civilisation and natural ecosystems. Although the phrase may appear exaggerated, scientists and environmentalists warn that several alarming developments across the planet indicate that such a scenario can no longer be dismissed as mere fiction. Climate change, deforestation, pollution, species extinction, and the depletion of natural resources are occurring at an unprecedented pace, largely due to irresponsible human activities. Rising global temperatures have intensified heatwaves, droughts, floods, and wildfires, transforming once-stable environments into regions of uncertainty and devastation. Many experts fear that if immediate action is not undertaken, future generations may inherit a world struggling to sustain life comfortably.

One of the most distressing consequences of environmental degradation is the disappearance of biodiversity. Forests, oceans, and wetlands provide habitats for countless species, yet industrial expansion and urbanisation continue to destroy these ecosystems relentlessly. Numerous animals are now endangered because their natural habitats are shrinking rapidly. The extinction of even a single species can disturb the delicate balance of nature, triggering consequences that affect food chains, agriculture, and human survival itself. Moreover, pollution from factories, vehicles, and plastic waste contaminates air and water supplies, endangering both wildlife and public health. Scientists have discovered microscopic plastic particles in oceans, rivers, and even human bodies, illustrating the alarming extent of environmental contamination.

Another major concern is society's excessive dependence on unsustainable consumption. Modern lifestyles often encourage overproduction, wastefulness, and indiscriminate exploitation of resources. Many individuals remain indifferent to environmental issues because the consequences appear gradual rather than immediate. However, environmental crises are becoming increasingly visible through rising sea levels, unpredictable weather patterns, and diminishing freshwater supplies. Some regions already experience climate-induced migration as communities are forced to abandon uninhabitable areas.

Std. IX Worksheet 3

Despite these daunting challenges, environmental experts emphasise that an ecological catastrophe is not inevitable if humanity adopts responsible practices promptly. Renewable energy, conservation programmes, afforestation campaigns, and sustainable lifestyles can significantly reduce environmental damage. Young people, in particular, possess the potential to influence future policies and social attitudes through awareness and activism. Ultimately, the survival of the planet depends not only upon scientific innovation but also upon collective responsibility and ethical decision-making.

i. What can be inferred about the author's attitude towards environmental issues?

The author _____

- a. believes environmental concerns are exaggerated and unrealistic
- b. considers environmental degradation a serious issue requiring urgent attention
- c. thinks technological progress alone will automatically solve all ecological problems
- d. views climate change as a temporary phenomenon with negligible consequences

ii. Which statement best reflects the central idea of the passage?

- a. Environmental destruction affects only wildlife and has little impact on humans.
- b. Human activities are accelerating environmental damage, but responsible actions can still prevent disaster.
- c. Industrialization should completely stop in order to protect ecosystems.
- d. Climate change is caused entirely by natural processes beyond human control.

iii. Which word from the passage is closest in meaning to "continuous"?

- a. inevitable
- b. unprecedented
- c. relentlessly
- d. delicate

iv. Why does the author believe that environmental catastrophe is not unavoidable?

v. How can young people contribute to protecting the environment in their daily lives?

Q2. Read the information given below and write a bio-sketch in about 100 -120 words on Dr. Radhakrishnan, former President of India and a great Indian Scholar and Philosopher. (3)

Birth: Bom in Tirutani near Madras, 1888

Family: Belonged to a poor Brahmin family

Education: Graduated from Madras Christian college

Teaching: Taught philosophy at Madras, Career Mysore and Calcutta Universities;

Professor of Eastern Religions at Oxford in 1936.

Later life: Indian Ambassador to the U.S.S.R in 1949; Vice-President of India in 1952. President of India from 1962 to 1967.

Std. IX Worksheet 3

Works: Written many books: The Hindu View of Life, The Indian Philosophy, Eastern Religions and Western Thought, Religion and Society are among his famous books.

Awards and Honours: Awarded Bharat Ratna, the highest Civilian award in 1931

Died in the year: 1975

Q3. Complete the given sentences using suitable words: (2)

- i. Neither the captain of the teams nor the players _____ willing to accept the referee's decision after the controversial match. (was/were/has been/is)
- ii. Each of the books that the librarian and the assistant recommended _____ interesting enough to keep the students engaged. (were/have been /is/are)
- iii. Not only the teachers but also the principal _____ surprised by the students' performance. (were/are/was/have been)
- iv. More than one student in the class room _____ completed the assignment before the deadline. (have/were/has/are)

Q4. Read the passage given below. There are four errors in it. Identify the errors and write the corrections along with the error words. (2)

One has been done for you as an example.

India is a nation rich in culture and traditions. Every citizen should respects the diversity that make our country unique. Many people can preserving ancient art forms, but others fail to recognising their importance. A responsible citizen must also learns to value harmony and mutual respect.

Error	Correction
respects	respect
_____	_____
_____	_____
_____	_____
_____	_____

Q5. How does Onula's guidance help Sentila mature both as a learner and an artist? (2)

Q6. Explain the significance of the line: 'The voice of their vocation is the voice of their identity' in the poem 'Gifts of Grace: Honouring Our Vocations'. (2)

Q7. How does the story 'How I Taught My Grandmother to Read' challenge common assumptions about age and learning? (2)

Q8. How does The Pot Maker present the conflict between tradition, survival, and personal passion? (3)

Q9. Make an illustrated and informative poster on 'Dignity of Labour'. (4)

Subject: Hindi

निर्देश — 1 दिए गए सभी प्रश्नों के उत्तर हिन्दी की उत्तर पुस्तिका में लिखिए।

2 कार्य स्वच्छ शुद्ध एवं स्पष्ट लेख में कीजिए।

No. of Questions: 10

M.M.: 25

प्रश्न 1 निम्नलिखित गद्यांश पर आधारित प्रश्नों के उत्तर निर्देश के अनुसार दीजिए: (1×5=5)

स्वास्थ्य का अर्थ केवल बीमारियों से मुक्त होना नहीं है, बल्कि शारीरिक, मानसिक और सामाजिक रूप से पूरी तरह स्वस्थ होना है। एक स्वस्थ शरीर में ही स्वस्थ मस्तिष्क का निवास होता है। जब हम स्वस्थ होते हैं, तो हमारा मन प्रसन्न रहता है, आत्मविश्वास बढ़ता है और हम किसी भी कार्य को पूरी ऊर्जा के साथ कर पाते हैं। इसके विपरीत, खराब स्वास्थ्य न केवल शरीर को कमजोर बनाता है, बल्कि इंसान को मानसिक रूप से भी तनावग्रस्त और उदास कर देता है। एक अच्छा स्वास्थ्य बनाए रखने के लिए सबसे महत्वपूर्ण है संतुलित आहार। हमें अपने भोजन में फल, हरी सब्जियाँ, प्रोटीन और विटामिन को शामिल करना चाहिए और बाहर के जंक फूड से बचना चाहिए। इसके साथ ही, नियमित व्यायाम या योग करना भी बहुत आवश्यक है। सुबह की सैर, खेल-कूद या कसरत करने से शरीर में रक्त का संचार सही रहता है और मांसपेशियाँ मजबूत बनती हैं। पर्याप्त नींद लेना भी उतना ही जरूरी है, क्योंकि नींद के दौरान हमारा शरीर पुनः कार्य करने में समर्थ हो जाता है। आज की भागदौड़ भरी जिंदगी में मानसिक स्वास्थ्य पर ध्यान देना भी अनिवार्य हो गया है। ध्यान और सकारात्मक सोच तनाव को कम करने में मदद करते हैं। साथ ही, स्वच्छता का ध्यान रखना, जैसे भोजन से पहले हाथ धोना और अपने आसपास सफाई रखना, हमें कई संक्रामक बीमारियों से बचाता है। निष्कर्षतः, स्वास्थ्य ईश्वर का दिया हुआ सबसे कीमती उपहार है। यदि हमारे पास स्वास्थ्य नहीं है, तो दुनिया की सारी सुख-सुविधाएँ और धन-दौलत बेकार हैं। इसलिए, हमें आलस्य को त्यागकर एक अनुशासित जीवनशैली अपनानी चाहिए ताकि हम एक लंबा और सुखी जीवन जी सकें।

(i) स्वास्थ्य का वास्तविक अर्थ क्या है?

(क) ध्यान और सकारात्मक सोच से तनाव को अधिक करना

(ख) शारीरिक, मानसिक बीमारियों से मुक्त होना

(ग) शारीरिक, मानसिक और सामाजिक रूप से स्वस्थ होना

(घ) शारीरिक, मानसिक और सामाजिक रूप से अस्वस्थ होना

(ii) "स्वस्थ शरीर में स्वस्थ मस्तिष्क का निवास होता है"—इस वाक्य का अनुच्छेद के संदर्भ में क्या निहितार्थ है?

(क) केवल शारीरिक रूप से मजबूत व्यक्ति ही बुद्धिमान होता है।

(ख) मानसिक स्वास्थ्य पूरी तरह से शारीरिक स्वास्थ्य पर निर्भर है।

Std. IX Worksheet 3

- (ग) शारीरिक तंदरुस्ती और मानसिक स्पष्टता एक-दूसरे के पूरक हैं।
(घ) मस्तिष्क को स्वस्थ रखने के लिए व्यायाम एकमात्र साधन है।

(iii) निम्नलिखित कथन (A) तथा कारण (R) को ध्यानपूर्वक पढ़िए तथा दिए गए विकल्पों में से कोई एक सही विकल्प चुनकर लिखिए।

कथन (A) आज के समय में केवल शारीरिक स्वास्थ्य पर ध्यान देना ही काफी है।

कारण (R): मानसिक स्वास्थ्य का हमारे जीवन की गुणवत्ता पर कोई प्रभाव नहीं पड़ता।

1 कथन (A) तथा कारण (R) दोनों गलत हैं।

2 कथन (A) गलत है परन्तु कारण (R) सही है।

3 कथन (A) सही है परन्तु कारण (R) गलत व्याख्या करता है।

4 कथन (A) सही है और कारण (R) कथन की सही व्याख्या करता है।

(iv) यदि आपका कोई मित्र केवल शारीरिक फिटनेस पर ध्यान देता है लेकिन मानसिक तनाव में रहता है, तो आप उसे इस अनुच्छेद के आधार पर क्या सलाह देंगे?

(v) एक स्वस्थ जीवनशैली अपनाने के लिए किन चार प्रमुख स्तंभों पर ध्यान देना क्यों आवश्यक है?

निम्नलिखित प्रश्नों के उत्तर निर्देश के अनुसार दीजिए:

(1×6 = 6)

प्रश्न 2(क) भारतीय सैनिकों की ————— (वीर) देखकर दुश्मन भाग खड़े हुए। रिक्त स्थान की पूर्ति उचित भाववाचक संज्ञा से कीजिए।

(ख) लगातार काम करने के कारण मुझे ————— (थकना) महसूस हो रही है। रिक्त स्थान की पूर्ति उचित भाववाचक संज्ञा से कीजिए।

प्रश्न 3 सर्वनाम के कितने और कौन से भेद हैं ?

प्रश्न 4 निम्नलिखित शब्दों के दो समानार्थी शब्द लिखिए :

(क) अग्नि (ख) आकाश

प्रश्न 5 निम्नलिखित शब्दों में से मूल शब्द व उपसर्ग को अलग करके लिखिए:

(क) विख्यात (ख) बेकसूर

प्रश्न 6 निम्नलिखित शब्दों में से मूल शब्द व प्रत्यय को अलग करके लिखिए :

(क) भारतीय (ख) सामाजिक

प्रश्न 7 निम्नलिखित प्रश्नों के उत्तर दीजिए —

(क) "गरीब बुढ़िया के लिए उसका इकलौता बेटा ही———— है।।" इस वाक्य में उचित मुहावरे को लिखते हुए उसका अर्थ लिखिए।

(ख) 'मीके पर मना कर देना' अर्थ के लिए कौन-सा मुहावरा प्रयोग होगा ?

प्रश्न 8 निम्नलिखित प्रश्नों के उत्तर दीजिए —

(1×2= 2)

(क) "तुम सौ तोरि कवन सौं जोरौ" पंक्ति के माध्यम से रैदास की किस मानसिक स्थिति का बोध होता है?

(ख) जाकी अंग-अंग बास समानी" पंक्ति द्वारा रैदास क्या संदेश देना चाहते हैं?

प्रश्न 9 'प्रिय पुस्तक' इस विषय पर दो मित्रों के बीच हुई बातचीत को संवाद के रूप में 100 शब्दों में लिखिए।

(5×1=5)

प्रश्न 10 समानार्थी शब्दों की सहायता से एक वॉल हैंगिंग बनाइए।

(5×1=5)

Std. IX Worksheet 3

Subject: Mathematics

General Instructions:

- 1) The work should be done neatly and systematically.**
- 2) The given questions are to be done in the Math notebook.**
- 3) Attempt all questions.**

No. of Questions: 10

M.M.: 25

1. Prove that the following rational numbers are equal: (2)
 - (i) $2/3$ and $4/6$
 - (ii) $4/5$ and $10/8$
 - (iii) $-3/5$ and $-6/10$
2. Find the sum: (2)
 - (i) $2/5 + 3/10$
 - (ii) $7/12 + 5/18$
 - (iii) $-4/7 + 3/14$
3. Find the difference: (2)
 - (i) $5/6 - 1/4$
 - (ii) $11/8 - 3/4$
 - (iii) $7/9 - (2/3)$
4. Find the product: (2)
 - (i) $2/3 \times 3/10$
 - (ii) $7/11 \times 5/8$
 - (iii) $4/7 \times 5/14$
5. Find the quotient: (2)
 - (i) $2/3 \div 3/10$
 - (ii) $7/11 \div 5/8$
 - (iii) $4/7 \div 5/14$
6. Show that: (3)
$$(1/2 + 4/3) \times 8/3 = 1/2 \times 8/3 + 4/3 \times 8/3$$
7. Simplify the following using the distributive property: (3)
$$7/9 \times (6/7 - 3/4)$$
8. Find the rational number x such that: (3)
$$5/6 \times [x + 3/5] = 5/6x + 1/2$$

Std. IX Worksheet 3

9. Simplify the following

(3)

$$\frac{1}{2} \times [5/6 + 4/3] + \frac{3}{4}$$

$$3/7 + 2/14 - \frac{1}{2}$$

10. Activity

(3)

Using waste material like (newspaper, clay, pop) make a model of ishango bone and show the notches reflecting prime numbers from 10 to 20.

Std. IX Worksheet 3

Subject: Science

General Instructions:

- * Neatly write the answers in your fair notebook.
- * Attempt the questions keeping in mind the weightage of each question.

No. of questions: 10

M.M. 25

Q1. An athlete is running in a straight line and suddenly makes a sharp turn while maintaining the same speed. Which of the following best explains the change in the athlete's motion? (1)

- A. The direction of motion changes, causing acceleration.
- B. The mass of the athlete determines the acceleration.
- C. The speed remains constant, so acceleration does not occur.
- D. The force applied by the ground is irrelevant to acceleration.

Q2. A solution contains 15 g salt dissolved in 135 g water. Its mass by mass percentage is: (1)

- A. 10%
- B. 15%
- C. 20%
- D. 25%

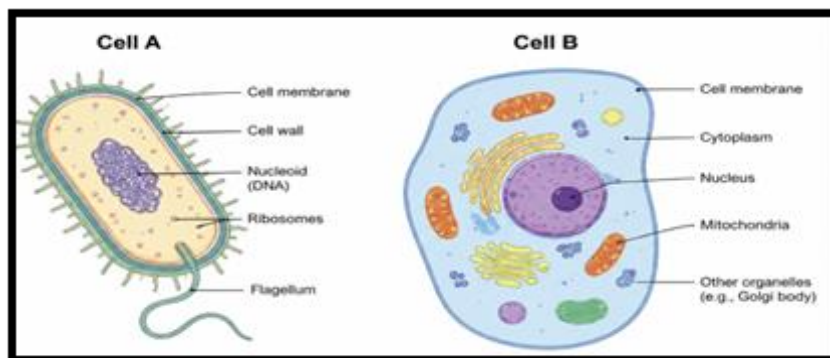
Q3. is a Assertion – Reason question. These consist of two statements – Assertion (A) and Reason (R). Answer these questions by selecting the appropriate option given below:

- A. Both A and R are true and R is the correct explanation of A
- B. Both A and R are true and R is not the correct explanation of A
- C. A is true but R is false
- D. A is False but R is true

Q3. **Assertion :** The velocity and acceleration of a body can be opposite in directions

Reason : A body can be at rest as well as in motion at the same point of time with respect to different frames of reference. (1)

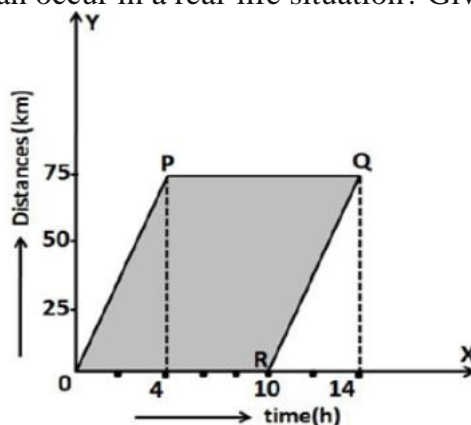
Q4.



- a. Which cell is prokaryotic? (0.5)
- b. Mention one feature present in Cell B but absent in Cell A. (1)
- c. Which type of cell is generally larger in size? (1)

Std. IX Worksheet 3

Q5. A student observes the position–time graph of an object shown below. Based on the graph, do you think the motion shown can occur in a real-life situation? Give a reason. (2)



Q6. A researcher prepares two samples using hydrogen and oxygen gases.

***Sample X** contains hydrogen and oxygen gases mixed in varying proportions and shows the properties of both gases separately.

***Sample Y** contains hydrogen and oxygen chemically combined in a fixed mass ratio. Sample Y neither supports combustion nor burns, and it cannot be separated by physical methods.

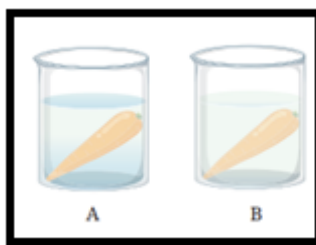
Answer the following questions:

(a) Identify Sample X and Sample Y. (1)

(b) Complete the following table by analysing the observations given above: (2)

Parameter	Sample X	Sample Y
Nature of composition		
Properties of constituents		
Separation method		
Type of substance		

Q7. A researcher carried out an experiment in which she took two carrots of similar sizes. She placed one carrot in plain water and the other carrot in concentrated salt solution. After 24 hours she recorded her observations.



a. What hypothesis does she want to test through this experiment?

b. What would you suggest for the improvement of this experiment?

Std. IX Worksheet 3

c. Why does the carrot in plain water stay stiff and crunchy, but the carrot in concentrated salt solutions become rubbery and limp?

Q8. During a highway test drive, a car was moving on a straight road with uniform acceleration. The driver recorded the speed of the car at different intervals of time, and the observations are given in the table below.

Time(t)	0	10	20	30	40	50
Speed(m/s)	5	10	15	20	25	30

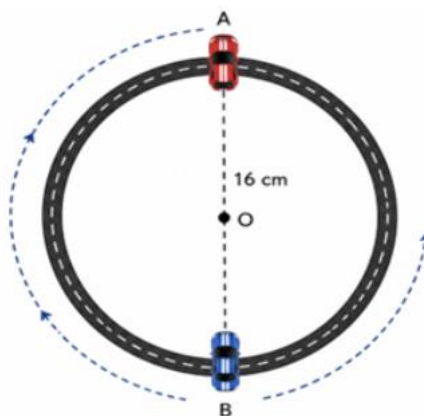
Based on the given data:

(3)

- Plot a speed–time graph using a suitable scale.
- Determine the nature of the motion of the car for first 10 seconds.
- Calculate the distance travelled by the car in 50 seconds using the graph

Q9. A child is playing with a toy car that moves at a constant speed along a circular path of diameter 16 cm. The toy car starts from point A and reaches the point directly opposite to it on the circular track in 4 minutes.

(4)



- What distance does the toy car cover while moving from point A to the opposite point
- Calculate the speed of the toy car.
- What is the displacement of the toy car?
- Find the average velocity of the toy car.

Q10. Perform an activity using simple materials available at home to understand how chromatography helps in separating coloured components of a mixture.

- Take two strips of white tissue paper, coffee filter paper, or absorbent paper towel. Draw a light pencil line about 3 cm above the lower edge of each strip. Put a small dot of black ink on one strip and a dot of blue ink on the other strip exactly at the centre of the pencil line.
- Take two transparent glasses or bowls containing a small amount of water. Carefully place each paper strip vertically in the water such that the lower edge touches the water, but the ink spot remains above the water level.
- Leave the setup undisturbed for several minutes and observe the movement of water and separation of colours on the paper.

Std. IX Worksheet 3

Materials Required

White tissue paper/coffee filter paper/paper towel

Black ink pen

Blue ink pen

Two transparent glasses or bowls

Water

Pencil

Observe:

- Movement of water upward on the paper
- Number of colours separated from each ink
- Difference between black and blue ink patterns
- Position of separated colours on the paper strip

Answer the following questions:

Q1. Why should the ink spot remain above the water level during the activity? (1)

Q2. Which ink showed more separated colours — black or blue? What does this indicate about the composition of that ink? (2)

Q3. State the basic principle involved in paper chromatography. Explain how this activity demonstrates the process of separation of substances in mixture. (2)

Std. IX Worksheet 3

Subject: Social Science

General Instructions:

The work should be done neatly and systematically.

The given questions are to be done in your respective subject notebooks.

No. of questions: 10

M.M. 25

- Q1. What were microliths? 1
- Q2. Explain the importance of fire for early humans. 2
- Q3. What was the main occupation of early humans? 2
- Q4. Define chemical weathering with an example. 2
- Q5. What is the role of underground water in limestone regions? 2
- Q6. Explain the importance of free and fair elections. 2
- Q7. In Rajasthan, strong winds carry fine sand particles from one place to another. How does wind act as an agent of denudation in this case? 3
- Q8. In a town, many poor children are unable to attend private schools because the fees are too high. The government starts free education programmes and opens government schools to help such children 3
- A. Which type of economy is reflected in this example?
- B. Why did the government intervene?
- C. Name one public service provided by the government in this case.
- Q9. Imagine a country facing poverty and unemployment. How can economists help improve the economic conditions of the country?
- Q10. Project Work: On A4 Sheets 5
Electoral Politics of Tamil Nadu (Recent Elections & By-Elections)

Project Guidelines

Include the following points in your project:

1. Introduction to elections in Tamil Nadu
2. Major political parties involved in recent elections and by-elections
3. Key issues raised during the elections
4. Role of voters and election campaigns
5. Participation of women and youth in elections
6. Use of media and social media in campaigning
7. Challenges faced during elections

Std. IX Worksheet 3

8. Recent by-elections in Tamil Nadu (Erode East, Vikravandi, etc.)
9. Conclusion: What do Tamil Nadu elections teach us about democracy?

Suggestions:

- Use pictures, newspaper cuttings, charts, or maps
- Add recent election data, party symbols, or slogans
- Include information about recent by-elections in Tamil Nadu
- Keep the project neat, informative, and creative

Subject: Artificial Intelligence

General Instructions:

- The work should be done neatly and systematically.
- The given questions are to be done in your fair notebook.

No. of questions: 10

M.M. 25

Choose the correct option:

(1x5=5)

1. Python is a _____ language.

- a) Low-level b) Machine language c) High-level d) Assembly

2. Which of the following is used to display output in Python?

- a) how() b) display() c) print() d) output()

3. Which symbol is used for comments in Python?

- a) // b) # c) /* */ d) **

4. What is the extension of a Python file?

- a) .pt b) .pyt c) .py d) .python

5. Which data type is used to store whole numbers in Python?

- a) float b) string c) int d) bool

6. Find the output of the following program code.

(1x5=5)

i) `>>> print(10 + 20)`

ii) `>>> print(6 * 2)`

iii) `x = 10`

`y = 4`

`print(x // y)`

iv) `a = 5`

`print(a ** 2)`

v) `>>> print("Python", "Programming")`

Std. IX Worksheet 3

Answer the following questions. (15)

7. How is input () different from print() function in Python? Give an example to elaborate. (3)

8. i) List any four rules for naming a variable in Python. (2)

ii) Define the terms: a) Expression b) Statements with an example for each. (4)

9. What are operators in Python? Explain the use of the following operators. a) % b) // (3)

10. What is the error in the following program codes? (3)

i) `print("My name is =",name)`

ii) `x=12 , y="23`

`print(x+y)`

Subject: Home Science

General Instructions:

- The work should be done neatly and systematically.
- The given questions are to be done in your fair notebook.

No. of questions: 10

M.M. 25

- Q1.** How has urbanization impacted the traditional joint family system in India? 1
- Strengthened the joint family system
 - Had no significant impact
 - Led to the decline of joint family structures
 - Encouraged more joint families to form
- Q2.** What is a key characteristic of a nuclear family? 1
- Extended family living together
 - Multiple generations in one household
 - Parents and their children living together
 - Presence of grandparents and other relatives
- Q3.** Which of the following is a significant factor contributing to the changing family structure in India? 1
- Increased life expectancy
 - Economic liberalization
 - Urbanization
 - All the above
- Q4.** What term is used to describe the shift from rural to urban living? 1
- Urbanization
 - Industrialization
 - Modernization
 - Globalization
- Q5.** In what way can family traditions and rituals contribute to a child's sense of identity? 1
- By limiting the child's exposure to different cultures
 - By creating a sense of belonging and continuity
 - By enforcing rigid structures and reducing flexibility
 - By emphasizing materialistic values
- Q6.** Which of the following best defines holistic development? 1
- Physical growth and development only
 - Mental and cognitive development only

Std. IX Worksheet 3

- c) Comprehensive growth including physical, emotional, social, and intellectual aspects
- d) Development of professional skills only

Q7. Very short answer type questions-

(5x1= 5)

- I. Which scheme aims at promoting education among girls by providing free textbooks and uniforms?
- II. What is the name of the program that encourages girl child enrolment in secondary education?
- III. Which policy offers financial incentives to families for the birth and education of a girl child?
- IV. Which scholarship works for girl students who were the only child of their parents?
- V. Name one ethic or value which has been followed by Indian families traditionally?

Q8. Short answer type questions-

(2x2=4)

- I. What role does technology play in modern family interactions?
- II. Explain the influence of migration on family?

Q9. Design a e-poster to educate parents about the various government initiatives and programs aimed at empowering girls.

5

Q10. Collect and paste pieces of different fibres like cotton, silk, wool, polyester etc. and write their properties.

5

Subject: Indian Music

General Instructions:

- The work should be done neatly and systematically.
- The given questions are to be done in your fair notebook.

No. of questions: 7

M.M. 10

1. Define Thaata. (1)
2. How many swaras are used in a Thaata? (1)
3. Name any four Thaata. (2)
4. What is Jati in music? (1)
5. Name the three types of Jati. (2)
6. Differentiate between Audav and Sampurna Jati. (2)
7. Fill in the blanks: (1)
 - a) A raga with five swaras is called _____ Jati.
 - b) A raga with seven swaras is called _____ Jati.

Std. IX Worksheet 3

Subject: Painting

Draw any 2 fruits and any 2 vegetables of your choice.

The drawings should be:

- Properly outlined
- Neatly coloured
- Pay attention to:
 - Shape and proportion
 - Natural colour combinations
 - Texture and details
 - Light shading for a realistic effect
- Keep the page clean and well-presented.
- Use water colours
- Large and clearly visible
- Background may be added creatively to enhance the presentation.