



ANNUAL EXAM REVISION SHEET -1

SUBJECT: EVS

CLASS-IV _____

FEBRUARY 2026

NAME: _____

DATE: _____

Q1. Tick the correct option:

- a) Eggs of _____ are the largest underwater egg in the world.
- (i) **Dolphin** (ii) **whale shark fish** (iii) **turtle** (iv) **none of these**
- b) Plants use _____ to produce their food by a process called photosynthesis.
- (i) **oxygen** (ii) **nitrogen** (iii) **helium** (iv) **carbon-dioxide**
- c) _____ means keeping yourself and your surroundings clean.
- (i) **hygiene** (ii) **sanitation** (iii) **recycle** (iv) **all of these**
- d) Mammals are the animals which give birth to young ones. **(True/False)**
- e) Clean air has no colour, taste or smell. **(True/False)**

Q2. Write 'T' for True and 'F' for False statements.

- a) Dirty and stagnant water is a breeding ground of mosquitoes.
- b) Nitrogen forms the major part of air.
- c) The outer covering of the egg is called albumen.

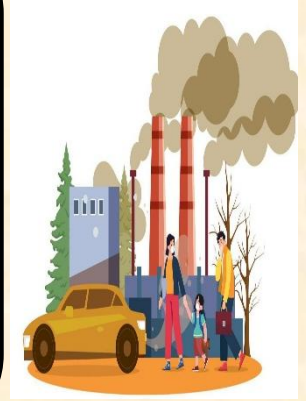
Q3. Define reproduction.

Q4. Our environment affects our mind and body. How?

Q5. How can we reduce air pollution? Write any three points.

Q6. Read the following and answer the questions.

Air is very important for all living things. We breathe air to stay alive. Air is a mixture of gases like oxygen, carbon-dioxide and nitrogen. Oxygen helps humans and animals to breathe, while plants use carbon dioxide to make their food. Clean air keeps us healthy but polluted air can cause many diseases like cough, cold and asthma etc. Smoke from vehicles and factories makes the air dirty. Trees help to keep the air clean by giving out oxygen. Therefore, we should plant more trees and keep our surroundings clean to breathe fresh and healthy air.



Q1. How is polluted air harmful to us?

Q.2 Smoke from _____ and _____ makes the air dirty.

Q.7. Give one word answer.

- a) The layer of air surrounding our earth _____
- b) Young one of a grasshopper _____
- c) The gas necessary for burning _____



ANNUAL EXAM REVISION SHEET - 2

SUBJECT: EVS

CLASS-IV _____

FEBRUARY 2026

NAME: _____

DATE: _____

Q1. Give one word answers.

- a) A hard brittle outer covering of an egg. _____
- b) Young one of a housefly. _____
- c) Animals who can live both on land and in water. _____
- d) It means to generate lesser waste. _____

Q2. Choose the correct option:

- a) We should _____ accepting single-use products and excessive packaging.
- (i) Reduce (ii) reuse (iii) refuse (iv) recycle
- b) _____ is a mixture of many colourless gases.
- (i) Air (ii) solution (iii) bubble (iv) all of these
- c) The gravity of the earth pulls the atmosphere downwards.
- (i) True (ii) False

Q3. Give reasons.

a) A clean and ventilated house is necessary for our health.

b) Bats are mammals and not birds.

Q4. Name any two diseases caused due to air pollution.

Q5. Read the following and answer the questions.

Animals are living things like us. Animals also eat, move, feel and breed to produce more of their kind. Some of the animals and birds lay eggs and some of them give birth to young ones. Reproduction ensures that animal species do not become extinct. In many animals like butterflies and frogs, the young ones look very different and change their form as they grow. They keep changing their appearance by shedding their body coverings and develop into an adult. The process of shedding body covering is called moulting.



a) What are the similarities between humans and animals?

b) Why is reproduction important?



ANNUAL EXAM REVISION SHEET -3

SUBJECT: EVS

CLASS-IV _____

FEBRUARY 2026

NAME: _____

DATE: _____

Q1. Assertion and Reasoning Based Question:

Assertion: Birds lay eggs with hard shells.

Reason: The hard shell protects the developing chick inside the egg.

A

A is true but R is false.

B

A is false but R is true.

C

Both A and R are true and R is the correct explanation for A.

D

Both A and R are true but R is not the correct explanation for A.

Q2. Assertion and Reasoning Based Question:

Assertion: Use unleaded petrol or CNG in all vehicles.

Reason: It increases the level of pollution in environment.

A

A is true but R is false.

B

A is false but R is true.

C

Both A and R are true and R is the correct explanation for A.

D

Both A and R are true but R is not the correct explanation for A.

Q3. Assertion and Reasoning Based Question:

Assertion: Solid waste must be thrown in covered dustbins.

Reason: It attracts germs and spread diseases.

A

A is true but R is false.

B

A is false but R is true.

C

Both A and R are true and R is the correct explanation for A.

D

Both A and R are true but R is not the correct explanation for A.

Q4. Assertion and Reasoning Based Question:

Assertion: Recycling can save our natural resources and energy.

Reason: Recycled products are expensive.

A

A is true but R is false.

B

A is false but R is true.

C

Both A and R are true and R is the correct explanation for A.

D

Both A and R are true but R is not the correct explanation for A.