



St. Mary's School, Dwarka
Winter Holiday Homework
Class VIII

General Instructions:

- 1) The work should be done neatly and systematically.
- 2) The given questions are to be done in your respective subject notebooks.
- 3) Attempt all questions.

Subject- English

No. of Questions: 5

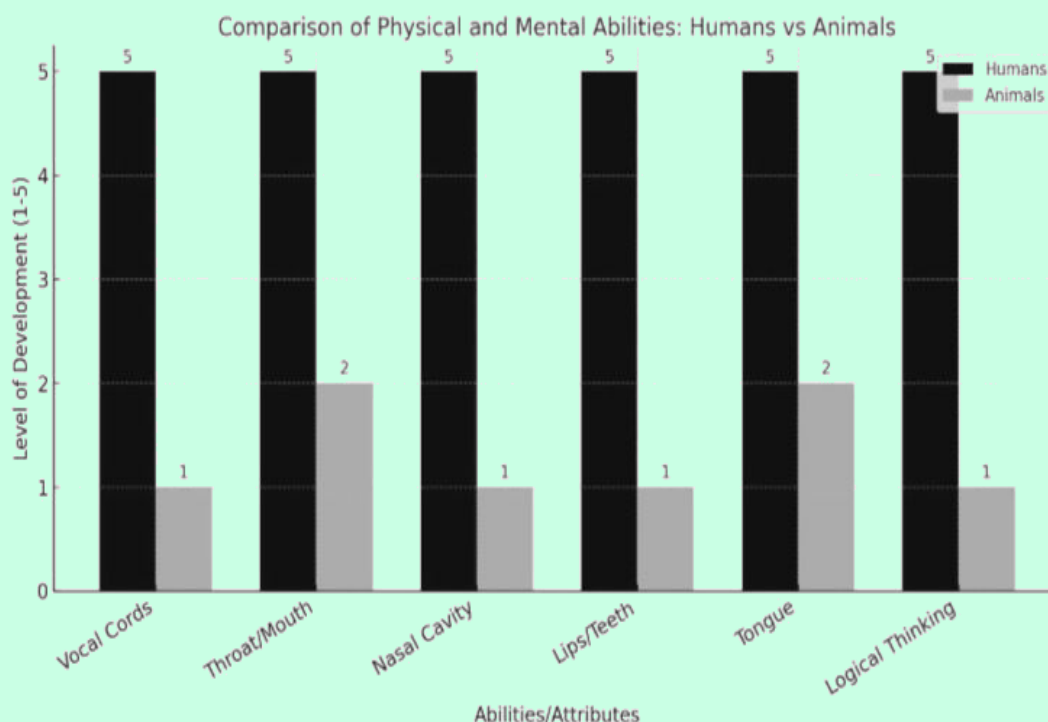
M.M:25

SECTION A – Reading Comprehension (7 marks)

Q1. Read the following passage.

1. Animals, unlike humans, are incapable of articulate speech and therefore cannot employ language in the way humans do. Although many species communicate through cries, calls, or signals that are understood within their own kind, such forms of communication differ fundamentally from human speech. Animals rely on a combination of sounds, body movements, and chemical signals such as scents to convey basic emotions like fear, aggression, or pleasure; however, these methods lack the structure and depth characteristic of human language.
2. Human speech is an exceptionally complex activity that depends on the precise coordination of multiple biological mechanisms. The production of speech sounds involves the controlled vibration of the vocal cords and the deliberate adjustment of the throat, oral cavity, and nasal passages. Furthermore, the synchronised movement of the lips, teeth, tongue, palate, and lower jaw enables humans to form distinct vowels and consonants. This high level of physiological coordination is beyond the capacity of animals, preventing them from producing organised sequences of sounds that function as sentences.
3. The inability of animals to speak is also rooted in words themselves. Words are not mere sounds, but symbolic representations assigned to objects, actions, qualities, and abstract ideas. For instance, the word 'bird' does not simply imitate a sound but serves as a conceptual label for a living creature, while other words describe its appearance, behaviour, or the emotions it evokes.
4. Human language, therefore, involves the use of symbols and the ability to arrange them logically to express complex thoughts, opinions, and relationships. Such symbolic thinking requires advanced reasoning and cognitive flexibility—abilities that animals do not possess. Consequently, animals are unable to manipulate words or concepts to construct meaningful statements.
5. In conclusion, although animals communicate through instinctive and limited systems, they cannot speak because they lack both the physical apparatus required for speech production and the intellectual capacity to use language symbolically. Speech thus

remains a uniquely human faculty, reflecting the superior cognitive and communicative abilities of humankind.



Based on your understanding of the passage, answer the questions given below. (1x7=7)

i. What can be inferred about the primary distinction between human and animal communication systems? (1)

- a) Animals think complex ideas but cannot express them fully.
- b) Human language relies on symbols, unlike animal communication.
- c) Animals communicate better through sounds, smells, and movements.
- d) Human speech uses symbols and structure, unlike animal communication.

ii. According to the passage, what is the main limitation that prevents animals from engaging in human-like speech? (1)

- a) The absence of vocal cords capable of producing complex sounds.
- b) A lack of coordination between mental and physical processes.
- c) An inability to connect words with abstract ideas and symbols.
- d) The absence of social systems that require language development.

iii. Complete the sentence. (1)

The complexity of human speech is attributed to the interaction between physical organs such as the vocal cords and the _____ required to organise and interpret language.

iv. Which of the following assumptions is challenged by the passage? (1)

- a) Animals can express emotions like fear and anger through their behaviour.
- b) Every system of communication, human or animal, depends on symbols.
- c) The production of speech sounds needs complex and coordinated movements.

d) Human language goes beyond the simple expression of emotional states.

v. Read the statement and reason, then choose the correct option. (1)

Statement: Animals lack the intellectual capacity to use words as symbols.

Reason: Symbolic representation requires cognitive ability and logical thinking, which animals do not possess.

- a) Both the statement and the reason are true, and the reason explains the statement.
- b) Both the statement and the reason are true, but the reason does not explain the statement.
- c) The statement is true, but the reason is false.
- d) The statement is false, but the reason is true

vi. Find a word from paragraph 2 that is the antonym of 'ambiguous'. (1)

- a) precise
- b) distinct
- c) deliberate
- d) organised

vii. Study the graph carefully. Find two attributes shared by animals but limited in function when compared to humans from the options given below. (1)

- a) throat and tongue
- b) vocal cords and mouth
- c) tongue and logical thinking
- d) tongue and teeth

SECTION B- Writing and Grammar (9 marks)

Q2. You are Amit/Amrita Bose, residing at 78/6G Pune, Maharashtra – 700040. Write a letter in about 100-120 words to the Editor of The Indian Express expressing concern over the acute water shortage in your locality. Highlight the difficulties residents face and urge the authorities to take immediate action. (5)

Q3. Fill in the blanks with the appropriate word. (½ x 8=4)

By the time the municipal officials finally responded, a large number of residents (a) _____ already submitted written complaints, yet neither of the departments (b) _____ willing to acknowledge responsibility. (c) _____ resident was therefore forced to rely on private water suppliers, and the authorities (d) _____ have acted sooner to prevent such inconvenience. The delay not only (e) _____ public frustration but also (f) _____ serious questions about administrative inefficiency, as the issue (g) _____ unresolved for several weeks, causing hardship to those who (h) _____ dependent on regular water supply.

- | | | | |
|----------------|---------------|----------------|----------------|
| a) i) has | ii) had | iii) have | iv) having |
| b) i) were | ii) are | iii) was | iv) have been |
| c) i) Few | ii) Each | iii) Several | iv) Many |
| d) i) must | ii) could | iii) should | iv) might |
| e) i) increase | ii) increased | iii) increases | iv) increasing |
| f) i) raised | ii) raises | iii) raise | iv) raising |
| g) i) remains | ii) remained | iii) remain | iv) remaining |
| h) i) are | ii) were | iii) have | iv) had |

SECTION C – Literature (9 marks)

Q4. Answer these questions in 30-40 words.

(2x2=4)

- a) 'He sees the planet as his fief...', what does this point of view lead humans to do in the poem, The Elephant and the Tragopan? What is the consequence for the rest of the planet?
- b) Why has the writer used personification to explain the spread of cholera in the lesson, The Stolen Bacillus?

Q5. Create a Sherlock Holmes Casebook as a detective investigating the mysterious death of Sir Charles Baskerville.

(5)

Instructions:

- Use A4 sized sheets
- Divide the casebook into 4 parts

1. Brief accounts of key events
2. Character profiles of important figures
3. Significant clues and pieces of evidence
4. Conclude the casebook with a final section in which you present your findings, explaining the mystery from Sherlock Holmes's perspective.

सामान्य निर्देशः—

- दिए गए सभी प्रश्नों के उत्तर हिंदी की उत्तर पुस्तिका में लिखिए।
- कार्य स्वच्छ शुद्ध एवं स्पष्ट लेख में कीजिए।
- यथासंभव प्रत्येक प्रश्न का उत्तर कमश लिखिए।

प्रश्न 1 निम्नलिखित प्रश्नों के निर्देशानुसार उत्तर दीजिए -

(1×5= 5)

(क) 'मुझे दो मीटर कपड़ा चाहिए।' इस वाक्य में थोड़ा-सा शब्द विशेषण का कौन-सा भेद है?

(ख) बच्चा बिस्तर पर सो रहा है। इस वाक्य में कौन-सी क्रिया है?

(ग) निम्नलिखित शब्दों में प्रयुक्त उपसर्ग और मूल शब्द अलग करके लिखिए-

(i) अस्वस्थ (ii) अनुग्रह

(घ) निम्नलिखित शब्दों में संधि तथा संधि विच्छेद कीजिए :

(i) महा +उदय (ii) भानूदय

(ङ) निम्नलिखित वाक्यों में उचित विराम -चिह्न लगाकर लिखिए-

(i) हे राम यह क्या हो गया

(ii) देश के वीर तन मन धन से देश की रक्षा करने के लिए तत्पर रहते हैं।

प्रश्न 2 निम्नलिखित गद्य पाठों पर आधारित प्रश्नों के उत्तर 25 से 30 शब्दों में दीजिए:-

(2×2=4)

(क) ओस की बूंद ने लेखक को पेड़ों के बारे में क्या बताया? हमारे जीवन में पेड़ का क्या महत्त्व है?

(ख) लाला झाऊलाल और पं० बिलवासी की दोस्ती कैसी थी? पाठ के आधार पर बताइए।

प्रश्न 3 निम्नलिखित पद्य पाठों पर आधारित प्रश्नों के उत्तर 25 से 30 शब्दों में दीजिए:-

(2×2=4)

(क) कबीरदास जी के अनुसार सच्चे मित्र की पहचान कब और कैसे की जा सकती है ?

(ख) बालक श्रीकृष्ण को किस बात का प्रलोभन देकर यशोदा दूध पीने के लिए तैयार करती थी?

प्रश्न 4 निम्नलिखित पूरक पुस्तक के पाठों पर आधारित प्रश्नों के उत्तर 25 से 30 शब्दों में दीजिए:- (2×2=4)

(क) तथागत ने अपना अंतिम उपदेश किसे दिया और उनका अंतिम उपदेश क्या था?

(ख) महात्मा बुद्ध ने संसार को क्या संदेश दिया ?

प्रश्न 5 (क) 'प्रिंस-प्रेसर कुकर' के लिए 50 शब्दों में एक सुन्दर-सा विज्ञापन तैयार कीजिए। (4×1=4)

(ख) अपनी-अपनी सेवाओं के विषय में हवाई जहाज़ और रेलगाड़ी के बीच हुई बातचीत को 70 से 80 शब्दों में संवाद के रूप में लिखिए। (4×1=4)

Subject- Sanskrit

No of Questions – 5

M.M.- 25

सामान्य निर्देश -

- 1 सर्वेषाम् प्रश्नानाम् उत्तरम् संस्कृतस्य कक्षाकार्यं पुस्तिकायाम् लिखत ।
- 2 सर्वेषाम् प्रश्नानाम् उत्तरम् क्रमानुसारम् लिखत ।
- 3 कार्यम् स्वच्छम् शुद्धम् स्पष्टम् लेखे च लिखत ।

प्रश्न 1 प्रदत्तं चित्रं दृष्ट्वा मञ्जूषायां प्रदत्त शब्दानाम् सहायतया चत्वारि वाक्यानि संस्कृते लिखत —
(1×4=4)

मञ्जूषा - वृक्षौ , गृहे , धेनुः , पक्षिणः , नदी , दृश्यम् , मनः , कूपः , पुष्पाणि , हरति , प्रवहति , हरीतिमा ।



प्रश्न 2 अधोलिखिते संवादे मञ्जूषायाः उचितपदानि चित्वा रिक्तस्थानानि पूरयतः (1×4=4)

मञ्जूषा - आपणम् , त्वम् , केतुम् , गच्छसि

सीता - पुनीत [1]..... किम् करोषि ?

पुनीतः - अहम् [2]..... गच्छामि ।

सीता - पुनीत ! त्वम् किमर्थम् आपणं [3]..... ?

पुनीतः- सीते , अहम् लेखनीम् [4]..... इच्छामि ।

माता - शोभनम् ।

प्रश्न 3 निम्न प्रश्नानाम् उत्तराणि उचित विकल्पम् चित्वा लिखत ।

(1×3=3)

(क) धातु रूपाणि लिखत —

(i) 'भू' धातु- विधिलिङ्ग लकारः, प्रथम पुरुषः, एकवचने उचित रूपम् किम् भवति?

(क) भवेत् (ख) भवेयुः (ग) भवेताम्

(ii) 'कृ' धातु- लट् लकारः, उत्तम पुरुषः, द्विवचने उचित रूपम् किम् भवति?

(क) करोति (ख) कुर्मः (ग) कुर्वः

(iii) 'इष्' धातु- लोट् लकारः, मध्यम पुरुषः, एकवचने उचित रूपम् किम् भवति?

(क) इच्छतम् (ख) इच्छाव (ग) इच्छ

(ख) शब्द रूपाणि लिखत

(1×3=3)

(i) 'नदी' शब्द षष्ठी विभक्तिः, बहुवचने उचित रूपम् किम् भवति ?

(क) नद्याः (ख) नदीभ्याम् (ग) नदीनाम्

(ii) 'अस्मद्' शब्द द्वितीया विभक्तिः, एकवचने उचित रूपम् किम् भवति ?

(क) माम् (ख) अस्मान् (ग) वयम्

(iii) 'युष्मद्' शब्द सप्तमी विभक्तिः, एकवचने उचित रूपम् किम् भवति ?

(क) त्वाम् (ख) युष्मान् (ग) त्वयि

प्रश्न 4 (क) अधोलिखितवाक्येषु उचितं अव्यय पदम् चित्वा रिक्त स्थानानि पूरयत —

(1×3=3)

(i) यत्र उद्यमः भवति सफलता भवति।

(क) तदा (ख) तव (ग) तत्र

(ii) मम परीक्षा आसीत्।

(क) अद्य (ख) ह्यः (ग) श्वः

(iii) रोगग्रस्तः युवकाः चलन्ति।

(क) शनैः (ख) तीव्रम् (ग) यदा

(ख) अधोलिखितेषु रिक्तस्थानेषु प्रकृति प्रत्ययं संयोज्य उचित पदम् विकल्पेन चित्वा

रिक्त स्थानानि पूरयत—

(1×3=3)

(i) बालाः (धा + क्त्वा) प्रसन्नाः भवन्ति।

(क) धावत्वा (ख) धावित्वा (ग) धावाय

(ii) मदनः विद्यालयात् (आ + गम् + ल्यप्) क्रीडाक्षेत्रम् गच्छति।

(क) गतवा (ख) आगत्य (ग) प्रगम्य

(iii) छात्राः (पठ् + तुमुन्) पुस्तकालयम् गच्छन्ति।

(क) पठीतुम् (ख) पठायितुम् (ग) पठितुम्

प्रश्न 5 (क) रेखांकित पदम् आधृत्य प्रश्नं निर्मीयताम् -

(1×3=3)

- (i) मातापितरौ नृणां सम्भवे अकथनीयं क्लेशं सहेते ।
- (ii) साहित्यरचनया अपि सावित्री महीयते ।
- (iii) मनुष्यः सत्यपूतां वाचं वदेत् ।

(ख) अधोलिखितम् शब्दयोः अर्थम् लिखत —

(1×2=2)

सविनीदम् , आहूय

Subject- Mathematics

No of Questions – 5

M.M.- 25

- Q1. a) If selling price of an article is ₹ 5460 after a discount of ₹ 250. What is the marked price of the article ? (1)
- b). Rahim bought an air purifier for ₹ 9900 including GST of 10%. Find the price of air purifier before GST was added. (2)
- Q2. a) Express i) 7600 cm^2 as m^2 . (1)
- . ii) 100 mm^2 as cm^2 .
- b) What is the height of a rhombus whose diagonals are of length 9 cm and 12cm and base is 6cm ? (1.5)
- c) If the area of a trapezium field is 960 squaremetres, the distance between two parallel sides is 30 m and one of the parallel side is 20 m, then what will be length of the other parallel side ? (1.5)
- Q3. Factorise the following algebraic expressions : (2 x 5=10)
- a) $3z^2 - 4z - 15$ b) $a^2 - 2ab + b^2 - c^2$
- c) $25 \text{ m}^2 + 30\text{m} + 9$ d) $3xy - 6x + 4y - 8$
- e) $p^4 - 81$
- Q4. a) Add : $(7xy + 5yz - 3zx)$, $(4yz + 9zx - 4y)$ and $(-3zx + 5x - 2xy)$ (1)
- b) Subtract : $4a - 6ab + 4b + 12$ from $7b - 8a + 4ab - 8$ (1)
- c) Divide : $3pq (64 p^2 - 81 q^2)$ by $(8p - 9q)$ (2)
- Q5. a) Simplify: $x^2(x - 3y^2) - xy(y^2 - 2xy) - x(y^3 - 5y^2)$. (2)
- b) Find the perimeter of a rectangle whose adjacent sides are $(3x - 5y)$ and $(-7x + 11y)$. Evaluate the perimeter when $x = 2$ and $y = 4$. (2)

Subject- Science

No of Questions – 5

M.M.- 25

Q1. During a school sports day, a student notices a rope tied to a tree and a pole is moving back and forth repeatedly when pulled and released. On careful observation, the rope completes 24 oscillations in 12 seconds. At the same time, students hear two sounds from a whistle—one is loud but low-pitched, and the other is soft but high-pitched. Based on this situation, answer the following questions:

- (a) Using the given data, (3)
- (i) Calculate the time period.
 - (ii) Calculate the frequency.
- (b) Analyse the two sounds produced by the whistle and explain: (2)
- (i) How does loudness differ from shrillness?
 - (ii) Which characteristic of a sound wave is responsible for each?

Represent two sound waves to support your answer.

Q2. A student places an uncharged metal rod on an insulating stand. He then brings a positively charged conductor close to the metal rod without touching it. Based on the above situation, answer the following: (1+1+1+2=5)

- (a) State the method of charging involved in this process.
- (b) What kind of charge is developed at the end of the metal rod nearer to the positively charged conductor?
- (c) What kind of charge is developed on the farther end of the metal rod?
- (d) Explain why the metal rod acquires charges even though it was initially uncharged?

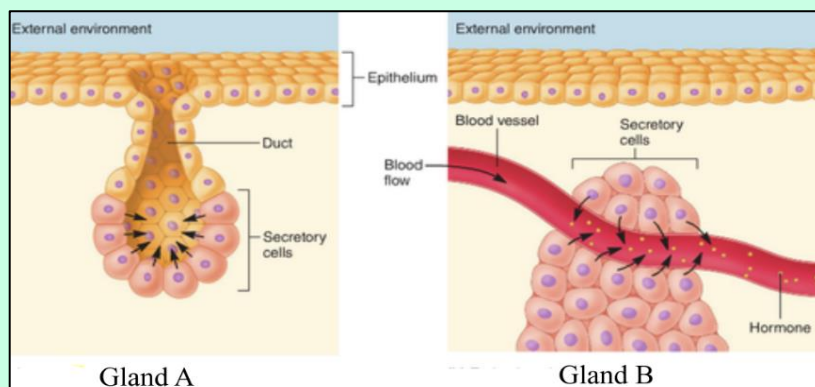
Q3. A city located near a tectonic plate boundary experienced a strong earthquake early in the morning. Many buildings collapsed, roads developed deep cracks, and electric poles fell. People living in old, poorly constructed houses suffered more damage compared to those in earthquake-resistant buildings. After the earthquake, several aftershocks were also felt, causing panic among the residents. (5)

Based on the above case study, answer the following questions:

- (a) Identify the main cause of earthquake.
- (b) Name the point inside the Earth where the earthquake originates. Explain with a diagram.
- (c) Why did earthquake-resistant buildings suffer less damage during the earthquake?
- (d) What are aftershocks and why do they occur?
- (e) Mention two safety measure that should be followed during an earthquake.

Q4. The human body has different types of glands that help in regulation and coordination. A student studies two glands, Gland A and Gland B.

- Gland A releases its secretions through ducts to a specific site where they act.
- Gland B releases its secretions directly into the bloodstream and affects distant target organs.



Based on the given information, answer the following:

(5)

(a) Identify Gland A and Gland B.

(b) State two differences between Glands A and Gland B based on their:

(i) mode of secretion

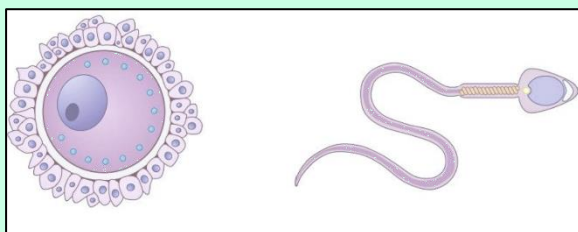
(ii) area of action

(iii) presence of duct

(c) Give one example of an endocrine gland and one example of an exocrine gland in the human body.

(d) Mention one function of each gland mentioned in part (c).

Q5. Two human reproductive cells involved in sexual reproduction are shown in the diagram below. (5)



(a) Identify and name both the reproductive cells.

(b) Based on your understanding of their structure and function, compare these two cells by stating any four differences related to:

(i) shape

(ii) motility

(iii) number produced

(iv) function

Subject: Social Science

HISTORY

- Q1. Why was Tipu Sultan called as the 'Tiger of Mysore'? 1
- Q2. Mention the states annexed by the British under the policy of Doctrine of Lapse'. 1
- Q3. Make a G.O. of the tribal revolts and explain any three of them in short. 3
- Q4. What are the key government documents and official records that shed light on modern political history? 3
- Q5. On the political map of India locate and label two trading centres of the English, French. 2

CIVICS

- Q1. Enumerate one point of difference between civil and criminal cases. 1
- Q2. What are Fundamental Rights? 1
- Q3. List the different provisions initiated by the Constitution of India to discourage the practice of manual scavenging. 2
- Q4. Mention any three points of difference between Lok Sabha and Rajya Sabha. 3
- Q5. Mention the conditions under which the President can impose an emergency. 3

GEOGRAPHY

- Q1. How is alluvial soil classified? 1
- Q2. State any four industrial regions of India. 1
- Q3. Distinguish between the agricultural practices in the developing countries and the developed countries. 2
- Q4. Elucidate any three causes for the uneven distribution of population in the world? 3
- Q5. What are the population pyramids? How do they help in understanding the population of a country? 3

Subject: Computer Science

No. of questions: 5

M.M. 25

Answer the following questions: -

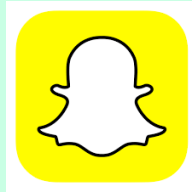
Q1. Categorize the following as AR for (Augmented Reality) and VR for (Virtual Reality).

$\frac{1}{2} \times 3 = 1\frac{1}{2}$

i)



ii)



iii)



Q2. Identify and name the following SDG Goals.

$\frac{1}{2} \times 3 = 1\frac{1}{2}$

i)



ii)



iii)



Q3. Write the full form of the following.

$\frac{1}{2} \times 4 = 2$

a) ML b) RPA c) AI d) MR

Q4. Answer the following questions.

$2 \times 5 = 10$

- What is robotics?
- What is 3D printing. Give any two 3D printed objects.
- Define the following. i) Edge Computing ii) Internet of Things
- Expand and define the term SDG.
- Mention any one aim for the following SDG Goals. i) SDG 3 ii) SDG 4

Q5. a) Using **for loop**, write the Python program for the following: -

$2 \times 5 = 10$

- to print the table for any number entered by the user
- to print the pattern given below.

```
@@@@
@@@
@@
@
```

- to print the odd numbers 1,2,3,7,9,11,15,17.

b) Using **while loop**, write the Python program for the following: -

- to print the number series from 1 to 10.
- to print the message "Trending Technologies" seven times.

Note: - Paste the snip of the program code and the output window after each program.
Upload the pdf of the practical on Microsoft Teams.

Subject: Elementary Math

No. of questions: 5

M.M. 25

Q1) Fill in the blanks:

(5)

- a) When two sides of a triangle are not equal, the triangle is called _____
- b) To convert higher unit to lower unit, we _____
- c) The first two multiples of 27 are _____
- d) If the selling price is more than the cost price, there will be _____
- e) Twice of the radius is called _____

Q2) Do as directed:

(2.5+2.5)

- a) Divide the successor of 6499 by 13.
- b) Find the sum of : 27 rupees 36 paise, 63 rupees and 23 rupees 42 paise

Q3) a) Manya bought a bag for ₹ 759.63 and sold it to Pari for ₹ 865.05

. How much money did she earn?

(2+2+2)

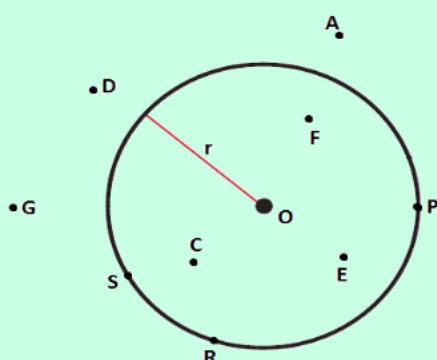
b) 2800 kg. potatoes are put into bags. Each bag holds 70 kg. How many bags are required ?

c) A cat has 5 kittens each weighing 0.8 kg. What is the total weight of all kittens?

Q4) Name the points which are:

(4)

- a) Inside the circle
- b) Outside the circle
- c) On the circle
- d) Center point of the circle



Q5) The sale of books in a shop in 6 months is as given below:

(2+1.5+1.5)

January	- ₹ 18000
February	- ₹ 16000
March	- ₹ 26000
April	- ₹ 67000
May	- ₹ 43000
June	- ₹ 43000

- a) Find the average monthly sale.
- b) In which months was the sale more than the average sale.
- c) In how many months was the sale less than the average sale.