



St. Mary's School, Dwarka
Holiday Homework
Class: XI
Worksheet 2

General Instructions:

- 1) The work should be done neatly and systematically.
- 2) The given questions are to be done in your respective subject notebooks.
- 3) Attempt all questions.

Subject: English Core

No. of questions: 10

M.M. 25

SECTION A- READING (5 marks)

Q1. Read the passage given below.

Fast fashion has become a defining feature of global consumer culture in recent decades. Clothing brands release new collections almost weekly, enticing shoppers with the allure of affordability and trendiness. However, behind this appealing façade lies a troubling reality. Fast fashion is not just a business model; it is a system that thrives on unsustainable practices and ethical compromises.

The environmental impact is staggering. According to the UN Environment Programme, the fashion industry is responsible for about 10% of global carbon emissions—more than international flights and maritime shipping combined. The production of synthetic fibers releases microplastics into waterways, while the dyeing and treatment of fabrics often involve toxic chemicals that contaminate freshwater sources. Furthermore, the enormous amount of textile waste generated by discarded clothing—much of it barely worn—ends up in landfills, taking decades to decompose.

Beyond environmental costs, there are profound social implications. Many fast fashion brands outsource manufacturing to developing countries where labor is cheap and regulations are lax. Workers, often women and children, toil in hazardous conditions for meager wages, lacking any form of social protection or union representation. The 2013 Rana Plaza collapse in Bangladesh, which killed over 1,100 garment workers, highlighted the devastating human toll of the industry.

Yet, consumers rarely see this darker side. Influencers and advertisements glorify endless consumption, making purchasing more and discarding frequently fashionable. Social media intensifies this cycle, with users showcasing “hauls” and “outfits of the day,” creating a culture of disposability.

Class 11 Worksheet 2

But cheap clothes come at a hidden cost—not to the buyer, but to the planet and the people behind the scenes.

Shifting toward sustainable fashion demands a collective awakening. It involves supporting ethical brands, embracing minimalism, buying secondhand, and holding corporations accountable. True style is not about volume or novelty but values and conscious choices. Until consumers reconsider what fashion truly means, the cycle of exploitation and environmental harm will continue unchecked.

Based on your understanding of the passage, answer the questions given below. (1x5=5)

- (i) **What is the main argument presented in the passage?**
- a) Fast fashion makes clothing accessible to all.
 - b) The fashion industry is innovating rapidly.
 - c) Fast fashion has significant ethical and environmental consequences.
 - d) Consumers should avoid buying second hand clothes.
- (ii) **Which of the following best explains the term “culture of disposability”?**
- a) focus on repairing and reusing clothes
 - b) tendency to hoard old garments
 - c) habit of buying and quickly discarding items
 - d) culture that values vintage fashion
- (iii) **What does the passage suggest about consumer behaviour?**
- a) Consumers are increasingly prioritizing sustainability.
 - b) Most consumers are aware of labour rights violations.
 - c) Shoppers are unaware or indifferent to the consequences of their purchases.
 - d) People are boycotting fast fashion en masse.
- (iv) **What was the significance of the Rana Plaza disaster, according to the passage?**
- a) led to the creation of new fashion trends
 - b) highlighted the inhumane conditions of garment workers
 - c) improved the quality of synthetic fibres
 - d) helped boost Bangladesh’s economy
- (v) **Which of the following solutions is not directly mentioned in the passage?**
- a) buying second-hand clothes
 - b) embracing minimalism
 - c) promoting slow fashion
 - d) instituting global fashion tariffs

SECTION B-WRITING & GRAMMAR

Q2. You are the HR Manager of a publishing house in Delhi. Draft a 'Situation Vacant' advertisement in about 50 words for the post of Junior Editor. Invent the necessary details. (2)

Q3. Fill in the blanks with suitable words:- (1/4x8=2)

Had I _____ (1) more informed about the intricacies of the contract, I _____ (2) made a different decision. The terms _____ (3) far more complex than I initially perceived, and I _____ (4) taken the advice of my colleagues. If I _____ (5) more proactive, I _____ (6) avoided the confusion that followed. Moreover, I _____ (7) been far more prepared for the negotiation had I read through _____ (8) fine print thoroughly.

Q4. Rearrange the following parts to form a coherent sentence: (1)

P. research influencing both public discourse and private lives globally

Q. social media has revolutionized communication and connectivity

R. in ways that were unimaginable just a decade ago,

S. although its implications on personal well-being remain a topic of intense

- A) Q - R - S - P
- B) Q - S - P - R
- C) Q - P - S - R
- D) Q - S - R - P

SECTION C- LITERATURE

Q5. Read the extract and answer the question that follows: (1x2=2)

(A) *“Now she’s been dead nearly as many years
As that girl lived. And of this circumstance
There is nothing to say at all,
Its silence silences.”*

What does the poet mean by “Its silence silences”?

- A) atmosphere is peaceful.
- B) photograph no longer brings any memories.
- C) grief is too profound to express in words.
- D) has no one to talk to anymore.

(B) *"The cardboard shows me how it was
When the two girl cousins went paddling,
Each one holding one of my mother's hands,
And she the big girl – some twelve years or so."*

What does the phrase "the cardboard shows me how it was" imply?

- A) watching a video recording.
- B) imagining a memory.
- C) looking at an old photograph.
- D) reading a diary entry.

Q6. How does the poet contrast the past and the present in the poem "A Photograph"? (2)

Q7. What does the photograph depict, and what emotions does it evoke in the poet? (2)

Q8. Why is the mother's laughter remembered with fondness and irony? (2)

Q9. In the poem "A Photograph," Shirley Toulson explores the theme of loss through a simple image. How does the photograph become a powerful symbol of both memory and absence? Discuss with reference to the poem. (3)

Activity:

Q10. "You Are Not Alone: Mental Health Matters". Design a poster creating awareness about the importance of mental health among teenagers. Use slogans, illustrations, and make it visually appealing. (4)

Subject: Hindi Core

No. of Questions – 10

M.M- 25

निर्देश — 1 दिए गए सभी प्रश्नों के उत्तर हिन्दी की उत्तर पुस्तिका में लिखिए।**2 कार्य स्वच्छ शुद्ध एवं स्पष्ट लेख में कीजिए।****प्रश्न 1 निम्नलिखित गद्यांश पर आधारित प्रश्नों के उत्तर निर्देश के अनुसार दीजिए:****(1×5=5)**

प्रकृति मनुष्य की सबसे बड़ी गुरु है। वह हमें न केवल जीवन जीने की कला सिखाती है, बल्कि धैर्य, संतुलन और सहनशीलता का पाठ भी पढ़ाती है। सूर्य नियमित रूप से उदय और अस्त होता है, नदियाँ बहती हैं, पेड़-पौधे चुपचाप फल और छाया प्रदान करते हैं। न वे शिकायत करते हैं, न अपेक्षा करते हैं। यही प्रकृति का मौन संदेश है कि कर्म करते जाओ, फल की चिंता मत करो। मनुष्य जब प्रकृति के साथ सामंजस्य बनाकर चलता है, तो वह न केवल बाह्य रूप से समृद्ध होता है, बल्कि उसकी आत्मा भी शांत और संतुलित रहती है। लेकिन जब वह अपने स्वार्थ में प्रकृति का दोहन करने लगता है, तब संकट उत्पन्न होते हैं—जलवायु परिवर्तन, बाढ़, सूखा, प्रदूषण आदि। आज के वैज्ञानिक युग में मनुष्य चाँद और मंगल तक पहुँच गया है, लेकिन यदि वह पृथ्वी पर अपने पर्यावरण की रक्षा नहीं कर पाया, तो सारी उन्नति व्यर्थ हो जाएगी। प्रकृति की रक्षा करना केवल सरकारों का काम नहीं, यह हर नागरिक का नैतिक कर्तव्य है। छोटे-छोटे प्रयास जैसे पेड़ लगाना, पानी की बचत करना, प्लास्टिक का प्रयोग कम करना, पर्यावरण के प्रति जागरूकता फैलाना – ये सभी कदम भविष्य को सुरक्षित बना सकते हैं। प्रकृति हमारी माँ के समान है, और माँ का सम्मान करना हमारा धर्म है। यदि हम प्रकृति की सेवा करें, तो वह भी हमें भरपूर आशीर्वाद देगी।

प्रश्न 1 निम्नलिखित गद्यांश पर आधारित प्रश्नों के उत्तर निर्देश के अनुसार दीजिए:**(1×5=5)****(i) प्रकृति हमें क्या सिखाती है?**

- (क) केवल फल और छाया देना
- (ख) जीवन जीने की कला, धैर्य और संतुलन
- (ग) दूसरों पर निर्भर रहना
- (घ) शिकायत करना और अपेक्षा रखना

(ii) जब मनुष्य प्रकृति का दोहन करता है, तो क्या होता है?

- (क) उसे पुरस्कार मिलता है
- (ख) मौसम सुहावना हो जाता है
- (ग) संकट उत्पन्न होते हैं जैसे बाढ़, सूखा
- (घ) प्रकृति और सुंदर हो जाती है

(iii) निम्नलिखित कथन(A) तथा कारण(R) को ध्यानपूर्वक पढ़िए तथा दिए गए विकल्पों में से कोई एक सही विकल्प चुनकर लिखिए।

कथन (A) प्रकृति मनुष्य की सबसे बड़ी गुरु है।

कारण (R) वह हमें न केवल जीवन जीने की कला सिखाती है, बल्कि धैर्य, संतुलन और सहनशीलता का पाठ भी पढ़ाती है।

- 1 कथन(A) तथा कारण(R) दोनों गलत हैं।
- 2 कथन(A) गलत है परन्तु कारण(R) सही है।
- 3 कथन(A) सही है परन्तु कारण(R) गलत व्याख्या करता है।
- 4 कथन(A) सही है और कारण(R) कथन की सही व्याख्या करता है।

(iv) प्रकृति की रक्षा कैसे संभव है ?

(v) प्रकृति का मौन संदेश क्या है ?

प्रश्न 2 स्वास्थ्य मंत्रालय, दिल्ली के निदेशक को कंप्यूटर टाइपिस्ट के लिए आवेदन-पत्र लिखिए।

(5×1=5)

प्रश्न 3 शोर से क्या तात्पर्य है?

(2×1 = 2)

प्रश्न 4 संचार के प्रकार बताइए।

(2×1 = 2)

प्रश्न 5 लोग नमक विभाग में नौकरी क्यों करना चाहते थे?

(1½×1 = 1½)

प्रश्न 6 स्वयं को खानदानी तथा श्रेष्ठ नानबाई साबित करने के लिए मियाँ नसीरुद्दीन ने कौन-सा किरसा सुनाया?

(1½×1 = 1½)

प्रश्न 7 परमात्मा को यदि पाना है तो कबीर जी के अनुसार किन दोषों से दूर रहना चाहिए?

(1½×1 = 1½)

प्रश्न 8 मीरा कृष्ण की उपासना किस रूप में करती हैं? वह रूप कैसा है?

(1½×1 = 1½)

प्रश्न 9 पहले और आज के संगीत में मुख्य अंतर क्या है?

(1×1 = 1)

प्रश्न 10 परियोजना कार्य : कबीरदास जी के कोई दो दोहे लिखकर एक मोबाइल कवर बनाइए।

(4×1=4)

Subject: Mathematics**General Instructions:**

- 1) Do all holiday homework in a separate notebook.
- 2) Revise all syllabus done till date.

M.M. 25

Q.1) Find the angle in radians between the hands of a clock at 7:20 pm. (2)

Q.2) Prove that $\frac{\sec 8x-1}{\sec 4x-1} = \frac{\tan 8x}{\tan 2x}$. (2)

Q.3) If $|z^2 - 1| = |z|^2 + 1$, then show that z lies on the y-axis. (2)

Q.4) If A is any set, then prove that $A \subset \emptyset \Leftrightarrow A = \emptyset$ (2)

Q.5) Show that: (2)

i) $\tan 3x \tan 2x \tan x = \tan 3x - \tan 2x - \tan x$

ii) $\cot x \cot 2x - \cot 2x \cot 3x - \cot 3x \cot x = 1$.

Q.6) If x lies in the first quadrant and $\cos x = \frac{8}{17}$, then find the value of : (3)

$\cos\left(\frac{\pi}{6} + x\right) + \cos\left(\frac{\pi}{4} - x\right) + \cos\left(\frac{2\pi}{3} - x\right)$.

Q.7) If $\sin \alpha$ and $\cos \alpha$ are roots of equation $ax^2 - bx + c = 0$, then find the relation satisfied by a, b, c. (3)

Q.8) i) If A and B are two sets such that $A \cup B = A \cap B$, then prove that $A = B$.

ii) If $\frac{z-1}{z+1}$ is purely imaginary number ($z \neq -1$), then find the value of $|z|$. (3)

Q.9) Find the domain and the range of the following functions: (3)

(i) $f(x) = \frac{x}{1+x^2}$ (ii) $f(x) = \frac{x^2-x+1}{x^2+x+1}$

Q.10) Convert (i) 6 radians into degree measure. (ii) $-47^\circ 30'$ into radians (3)

Activity: Each student will create a Set on a specific theme, such as, fruits, countries, mobiles of different brands and perform set operations. (union, intersection, difference).

Subject: Physics

- Q1.** What force will change the velocity of a body of mass 1Kg from 20ms^{-1} to 30ms^{-1} in 2s? 1
 (a) 25N (b) 10N (c) 5N (d) 2N
- Q2.** The displacement of a particle in m is given by $s = 3t^2 + 2t + 2$, where time t is in seconds. If the particle starts with a velocity $v = 2\text{ms}^{-1}$ at $t = 0$, then find the velocity at the end of 2 s. 1
- Q3.** On a 60 km track, a train travels the first 30 km with a uniform speed of 30kmh^{-1} . How fast must the train travel next 30 km to average 40kmh^{-1} for the entire trip? 2
- Q4.** A body covers one third of its journey with speed u' , next one third with speed ' v ' and the last one-third with speed w' . Calculate the average speed of the body during the entire journey. 2
- Q5.** A body travelling along a straight line traversed one-half of the total distance with a velocity v_0 . The remaining part of the distance was covered with a velocity v_1 , for half the time and with velocity v_2 for the other half of time. Find the mean velocity averaged over the whole time of motion. 2
- Q6.** The position of an object moving along x -axis is given by $x = a + bt^2$ where $a = 8.5\text{ m}$, $b = 2.5\text{ms}^{-2}$ and t is measured in seconds. What is its velocity at $t = 0\text{ s}$ and $t = 2.0\text{ s}$. What is the average velocity between $t = 2.0\text{ s}$ and $t = 4.0\text{ s}$? 3
- Q7A** burglar's car starts with an acceleration of 2ms^{-2} . A police vigilant party comes after 5 seconds and continues to chase the burglar's car with a uniform velocity of 20ms^{-1} . Find the time at which the police van overtakes the burglar's car. 3
- Q8. (i)** A stone falls from a cliff and travels 24.5m in the last second before it reaches the ground at the foot of the cliff. Find the height of the cliff.(ii)A body starting from rest accelerates uniformly at the rate of 10cms^{-2} and retards uniformly at the rate of 20cms^{-2} . Find the least time in which it can complete the journey of 5 km if the maximum velocity attained by the body is 72kmh^{-1} . $(1.5+1.5=3)$
- Q9.** A body is dropped from rest at a height of 150m, and simultaneously, another body is dropped from rest from a point 100m above the ground. What is their difference in height after they have fallen (i) 2s (ii) 3s? How does the difference in height vary with

time?

3

Q10. A parachutist bails out from an aeroplane and, after dropping a distance of 40m, he opens the parachute and decelerates at $2ms^{-2}$. If he reaches the ground with a speed of $2ms^{-1}$, how long is he in the air? At what height did he bail out of the plane?

(2.5+2.5=5)

Subject: Chemistry

1. What are homogeneous and heterogeneous mixtures? Give one example of each. (3)
2. State the Law of Multiple Proportions. Explain it with an example involving carbon and oxygen. (2)
3. Define the term "SI units". Give the SI units for mass and temperature. (2)
4. Perform the following calculation and express the result with the appropriate number of significant figures: 0.5025×1.25 (2)
5. Convert the following: (2)
 - 50 mL to liters
 - 25 °C to Kelvin
6. Calculate the number of atoms in 0.1 moles of carbon. (Avogadro's number, $N_A = 6.022 \times 10^{23} \text{ mol}^{-1}$) (3)
7. What is the empirical formula of a compound that has the following percentage composition: Carbon (C) = 40%, Hydrogen (H) = 6.67%, Oxygen (O) = 53.33%? (Atomic masses: C = 12 u, H = 1 u, O = 16 u) (3)
8. In the reaction $2\text{H}_2(\text{g}) + \text{O}_2(\text{g}) \rightarrow 2\text{H}_2\text{O}(\text{l})$, if 4 g of hydrogen reacts with 32 g of oxygen, what is the limiting reactant? (Molar mass of $\text{H}_2 = 2 \text{ g/mol}$, Molar mass of $\text{O}_2 = 32 \text{ g/mol}$) (3)
9. Define molarity. Write its formula. (2)
10. Balance the following equation by the ion-electron method. $\text{MnO}_4^- + \text{ClO}_3^- \rightarrow \text{MnO}_2 + \text{Cl}^-$ (Basic Medium) (3)

Subject: Computer Science

- | | | |
|-----|---|-------|
| Q1 | a) What do you mean by expandable storage of a mobile system? | 1 |
| | b) Name any two utilities. | 1 |
| Q2 | Python is an interpreted and expressive language. Justify. | 2 |
| Q3 | Discuss two common tools for developing an algorithm. | 2 |
| Q4 | What is testing and debugging? | 2 |
| Q5 | What is the use of None in Python? Give an example. | 2 |
| Q6 | Difference between == and =: | 2 |
| Q7 | Write output: | 2 |
| | a) <code>print(True + True * False)</code> | |
| | b) <code>print(a and b or not a)</code> | |
| Q8 | Give output: | 2 |
| i) | <pre> x = 8 y = 3 x //= y + 1 print(x) </pre> | |
| ii) | <pre> x = True y = False print(x and not y or y and not x) </pre> | |
| Q9 | Draw a flowchart to do the following: | 2x2=4 |
| | a) To find largest of three numbers. | |
| | b) To compute factorial of a number | |
| Q10 | List the different types of operators with examples in Python with the help of a G.O. | 5 |

Activity:

Design the Crossword Puzzle as per the clues given.

Crossword Clues (Data Representation)

Across:

1. Used to represent data using only 0 and 1 (6)
2. Eight bits make one ____ (4)
3. Base-10 number system (8)
4. Unit of data smaller than a byte (3)

Down:

2. Base-16 number system (11)
3. Converts high-level language into machine code (9)
4. System used internally by computers (6)
5. A character like 'A' is stored using this code (abbr.) (5)

Subject: Biology

No. of questions: 10

M.M. 25

- Q1. The term 'systematics' refers to (1)
- a) Identification and classification of plants and animals
 - b) Nomenclature and identification of plants and animals
 - c) Diversity of kinds of organisms and their relationship
 - d) Study of habitats of organisms and their classification

- Q2. A prothallus is ‘ ‘ (1)
- a) A structure in pteridophytes formed before the thallus develops
 - b) A sporophytic free living structure formed in pteridophytes
 - c) A gametophyte free living structure formed in pteridophytes
 - d) A primitive structure formed after fertilization in pteridophytes

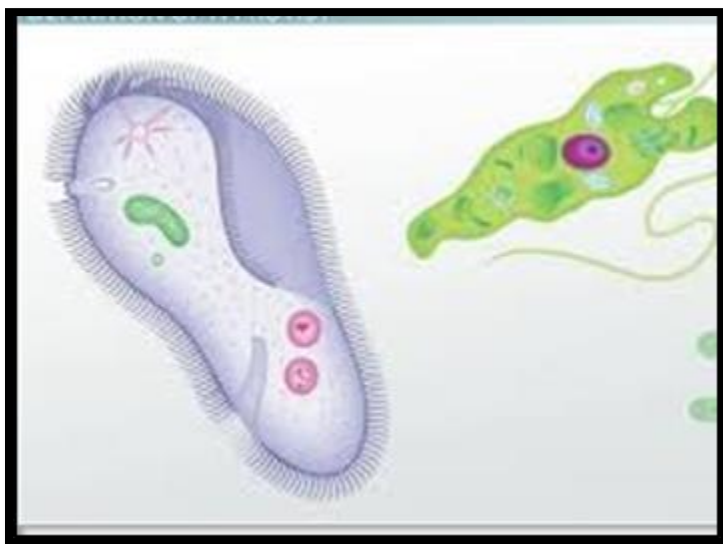
Two statements are given: one labelled Assertion (A) and the other labelled Reason (R).

Select the correct answer to these questions from the codes (a), (b), (c) and (d) as given below.

- a) Both A and R are true and R is the correct explanation of A.
- b) Both A and R are true but R is not the correct explanation of A.
- c) A is true but R is false.
- d) A is false but R is true

- Q3. Assertion: Methanogens are found in the gut of ruminants.
Reason: Methanogens are involved in the production of biogas.
- Q4. a) What are prions? (1+1=2)
b) Name the disease it causes in cattles and humans.
- Q5. The plant body in higher plants is well differentiated and well developed. Roots are the organs used for the purpose of absorption. What is the equivalent of roots in the less developed lower plants? (2)
- Q6. A virus is considered as a living organism and an obligate parasite when inside a host cell. But virus is not classified along with bacteria or fungi. What are the characters of virus that are similar to non-living objects? (3)
- Q7. Heterospory, i.e. formation of two types of spores—microspores and megaspores is a characteristic feature in the life cycle of a few members of pteridophytes and all spermatophytes. Do you think heterospory has some evolutionary significance in plant kingdom? (3)
- Q8 Cyanobacteria and heterotrophic bacteria have been clubbed together in Eubacteria of kingdom Monera as per the “Five Kingdom Classification” even though the two are vastly different from each other. Is this grouping of the two types of taxa in the same kingdom justified? If so, why? (3)

Q9. Observe the diagrams and answer the questions that follow:



A

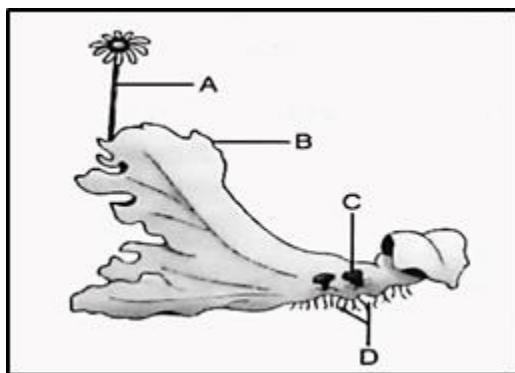
B

Two organisms of Protista kingdom are shown above.

- (a) Identify the organisms (A) and (B) and assign them to their respective phyla.
- (b) Write any two differences between them.
- (c) How does A obtain its food?

(2+1+1=4)

Q10. Observe the diagrams and answer the questions that follow:



- a) Identify the plant given above and name the division, it belongs to.
- b) Label the parts A, B, C and D marked on it.
- c) Give a brief description of C.

(2+2+1=5)

Activity: Collect any three flowers. Write their scientific name and inflorescence.

Subject: Informatics Practices

No. of questions: 10	M.M. 25
Q1 a) What do you mean by expandable storage of a mobile system?	1
b) Name any two utilities.	1
Q2 Python is an interpreted and expressive language. Justify.	2
Q3 Write a short note on the Multiple Assignment feature of Python.	2
Q4 Write about the important concept of discarding old storage devices.	2
Q5 What is the use of None in Python? Give an example.	2
Q6 Difference between == and =.	2
Q7 Write output:	2
i) <code>print (True + True * False)</code>	
ii) <code>print (a and b or not a)</code>	
Q8 Give output:	2
i) <code>x = 8</code>	
<code>y = 3</code>	
<code>x //= y + 1</code>	
<code>print(x)</code>	
ii) <code>x = True</code>	
<code>y = False</code>	
<code>print(x and not y or y and not x)</code>	
Q9 Write about any four data types in Python.	4
Q10 List the different types of operators with examples in Python with the help of a G.O.	5

Design the Python Data Types Crossword Puzzle as per the clues given.

Across

1. Used to store text data (e.g., "hello").
2. A group of values stored in a specific order, changeable.
3. Represents true or false values.
4. A collection of key-value pairs.

Down

1. Whole number type.
2. A collection of unique, unordered items.
3. Stores multiple items in an ordered, unchangeable way.

Subject: Business Studies

General Instructions:

- The given assignments are to be done in the fair notebook only.
- The work should be done neatly and in a systematic manner.

No. of questions: 10

M.M. 25

- Q.1 The possibility of loss due to unfavorable or unexpected events is known as: 1
 a) Business ethics. b) Social responsibility.
 c) Business risk. d) Business opportunity.
- Q.2 Which of the following best describes a "service" type of industry? 1
 a) Extracting raw materials from the earth.
 b) Producing finished goods from raw materials.
 c) Providing intangible benefits to customers.
 d) Cultivating and growing plants and animals.
- Q.3 The objective of a business to contribute to the well-being of society is known as: 1
 a) Profit maximization. b) Wealth creation.
 c) Social objective. d) Economic growth.
- Q.4 Assertion (A) A person earning livelihood is the main aim of economic activities.
 Reason (R) It helps people in earning their bread and butter by performing several activities.
 Choose the correct option: 1
 (A) Both A and R are true. R is the correct explanation of A
 (B) Both A and R are true, but R is not the correct explanation of A
 (C) A is correct, but R is incorrect
 (D) A is incorrect, but R is correct
- Q.5 Transfer of interest exists in the case of 1
 (A) Profession (B) employment
 (C) business (D) none of these
- Q.6 Explain how the absence of warehousing facilities could negatively impact the process of trade and commerce. 3
- Q.7 Dr. Rajiv Mishra is working against the post of a senior doctor in a government hospital. He does not discriminate between the rich and poor while treating his patients medically. When he returns home from the hospital, he attends to the poor patients at home free of cost between 6 pm to 8 pm. Besides, he gives them the information about the employment opportunities. He advises many young people to go into the fields of advertising and transportation. They went into these fields and remarkably succeeded there.
 (1) What type of activities does Dr Rajiv Mishra perform in the hospital and at home
 (2) Explain the auxiliaries to trade mentioned in the above para. 3
- Q.8 Analyze the interrelationship between different types of industries (primary, secondary, and tertiary) with the help of a suitable example. 4

Class 11 Worksheet 2

Q.9 Ratan after doing his B.Pharm degree from a reputed government college started two chemist shops in two different localities of his home town. Encouraged with the success of these shops, he started six more shops in different cities of the state. His strategy was to cut price, focus on lower and middle class patients and open shops near hospitals. He earned good profit margins. But the staff of the shops did not give much attention to the customers. Because of this mis-management he started incurring huge losses and his business failed. On the basis of the given information about Ratan, answer the following questions:

a) Identify and explain the main cause behind the business failure of Ratan.

b) Explain any two other causes of risk associated with Ratan's business.

4

Q.10 Different situations in different business are being elaborated below:

(a) Sahil had a match stick factory in Nepal which got destructed by the recent earthquake.

(b) Samsung company was charged with evasion of tax and asked to pay fine in crores which would lead to heavy losses for the company.

(c) Mr. Manish, a senior manager in a telecom company shared confidential information about the company with a competitor which led to huge losses for the company.

(d) Typewriters is becoming redundant.

Define Risk. Identify the types of business risk being referred to in all the above cases.6

Activity: Analyse the reason behind Ministry of Corporate Affairs (MCA) probe for Gensol engineering/ Blue Smart. Collect the information and present it in a file.

Subject: Accountancy

General Instructions:

- The given assignments are to be done in the fair notebook only.
- The work should be done neatly and in a systematic manner.

No. of questions: 10

M.M. 25

- Q.1 If the expenses paid during the year are Rs.30,000 including Rs.5,000 as prepaid expenses for next year and Rs.2,000 outstanding expenses of previous year. The amount to be recorded as current year expenses following accrual basis of accounting will be Rs.----- 1
- Q.2 Statement-1: Cash basis of accounting is not recognized by Income Tax Act.
Statement-2: Cash basis of accounting does not follow matching principle and accrual concept.
Choose the correct option: 1
- a) Only statement -1 is correct.
 - b) Only statement-2 is correct.
 - c) Both statements are correct.
 - d) Statement-1 is correct but statement-2 is incorrect.
- Q.3 Due to which principle, contingent liabilities are shown in the financial statements? 1
- Q.4 Which of the following is not a fictitious assets? 1
- a) Preliminary expenses
 - b) Advertisement expenses
 - c) Prepaid expenses
 - d) Underwriters commission
- Q.5 Trade discount is allowed at the time of 1
- Q.6 Alok who runs a garment store bought garments from garment factory for Rs.42,000. It sold garments of Rs.20,000 for Rs.26,000. An NGO wanted to purchase some garments for free distribution. Alok sold them garments costing Rs.12,500 at the cost price. He also bought two ceiling fans for Rs.3,000 for installing in the showroom and two wooden racks of Rs.10,000 each for displaying garments in the store. Alok's friend Umesh liked the wooden racks and asked Alok to sell one of the rack as he needed one urgently. Alok sold one rack to Umesh at the cost price of Rs.10,000. Answer the following questions:
- i) What is the amount of 'Purchases' by Alok?
 - (ii) What is the amount of Sales' by Alok? 3
- Q.7 Discuss the relevance and importance of the matching principle in financial reporting. 3
- Q.8 A company making medicines (Pharmaceutical Company) had following transactions.
1. Salaries paid to staff
 2. Paid for telephone bills
 3. Bought a machinery
 4. Paid for raw material purchased
 5. Cash received from customers who bought medicines
 6. Tax paid to the government
 7. Paid for construction of new factory building
 8. Paid for repairing of machinery

Class 11 Worksheet 2

Classify these transactions as: (a) Revenue Expenditure (b) Capital Expenditure (c) It is not a expenditure at all. 4

Q.9 Explain the following:

- (i) Capital receipts (ii) Expenditure
- (iii) Deferred revenue expenditure (iv) Fictitious asset

4

Q.10 Prepare Accounting Equation from the following :—

6

1. Started business with cash Rs.75,000 and goods Rs.25,000.
2. Paid for Rent Rs.2,000.
3. Bought goods for cash Rs.30,000 and on credit for Rs.44,000.
4. Goods costing Rs.50,000 sold at a profit of 25%, out of which Rs.27,500 received in Cash.
5. Purchased a Motor-cycle for personal use Rs.20,000.

Activity: Create a Jigsaw puzzle on Basic Accounting Terms using cardboard with terms and definitions that need to be matched.

Subject: Economics

No. of questions: 10

M.M. 25

- Q1. Analyse the factors influencing production decisions. How do producers decide what to produce, and what role do consumer preferences and resource availability play? 2
- Q2. Evaluate the application of the law of demand in real markets. Why do consumers purchase more of a product when its price falls? Support your reasoning with examples. 2
- Q3. Compare and contrast the effects of demand changes. How do shifts in demand differ from changes in quantity demanded? Illustrate with a real-life scenario. 2
- Q4. Examine the shape of the Indifference Curve using consumer behaviour theories. Why is an indifference curve generally convex to the origin, and what does it reveal about consumer preferences? 2
- Q5. Interpret the relationship between utility and consumption choices. How does the negative slope of an indifference curve reflect a consumer's trade-offs between goods? 2
- Q6. Assess the logical consistency of indifference curves in preference analysis. Why do indifference curves never intersect, and how does this maintain the integrity of consumer choice theory? 3
- Q7. Evaluate the satisfaction levels indicated by different indifference curves. Why does a higher indifference curve represent a greater level of consumer satisfaction? What assumptions underlie this concept? 3
- Q8. Critically analyze the applicability of the law of diminishing marginal utility across different consumption patterns. Does this law hold true even when consumption occurs in intervals? Defend or refute with reasoning. 3
- Q9. Apply the concept of diminishing marginal utility to knowledge and education. How does the law of diminishing marginal utility relate to learning experiences? Can there be a point where additional knowledge provides less utility? 3
- Q10. Determine the elasticity of demand in various markets. Categorize the demand elasticity for the following products—petrol, textbooks, cars, and milk—by considering factors like necessity, availability of substitutes, and income effects. 3

Activity: Price Sensitivity Experiment – You need to analyse the prices of a common product (e.g., a mobile phone or grocery item) across multiple stores or online platforms. You can document how pricing affects your willingness to buy and assess demand elasticity.

Subject: History

No. of questions: 10

M.M. 25

- Q1. Who was the founder of the principate in Rome? 1
- Q2. What was the capital of the eastern part of the Roman Empire after its division in the 4th century CE? 1
- Q3. What term was used for large Roman landed estates? 1
- Q4. What were Denarius and Solidus? 1
- Q5. What role did the Senate play during the early Roman Empire? 2
- Q6. Name any two ways in which the Roman Empire integrated its diverse population. 2
- Q7. Why did Augustus avoid using the title of king or dictator? 3
- Q8. Describe the features of the Roman urban centres as explained in the textbook. 3
- Q9. What was the significance of the expansion of Roman citizenship as mentioned in the text? 3
- Q10. Describe the main features of Roman administration under the Principate. How did the emperor balance his power with republican institutions? 8

Activity: Design Roman Coins

Instructions:

- Design 3–4 hand-drawn Roman coins featuring emperors (like Augustus or Nero), gods, or important symbols.
- On the back, write a short explanation of what each image or symbol represents.
- Use foil or card paper to give a real coin-like effect.

Subject: Political Science

No. of questions: 10

M.M. 25

- | | | |
|------|--|---|
| Q.1 | Explain the objective of political theory. | 1 |
| Q.2 | What is the meaning of politics at the present time? | 1 |
| Q.3 | What is economic liberty? | 1 |
| Q.4 | Write four importance of equality. | 2 |
| Q.5 | What is the relationship between equality and law? | 2 |
| Q.6 | Political Science is a Science. Give reasons. | 2 |
| Q.7 | Discuss pre-conditions which are essential for an individual to enjoy Liberty. | 2 |
| Q.8 | Explain the relationship between political and economic liberty. | 4 |
| Q.9 | Explain main dimensions of equality. | 4 |
| Q.10 | Explain the main dimensions of justice. | 6 |

Subject: Geography

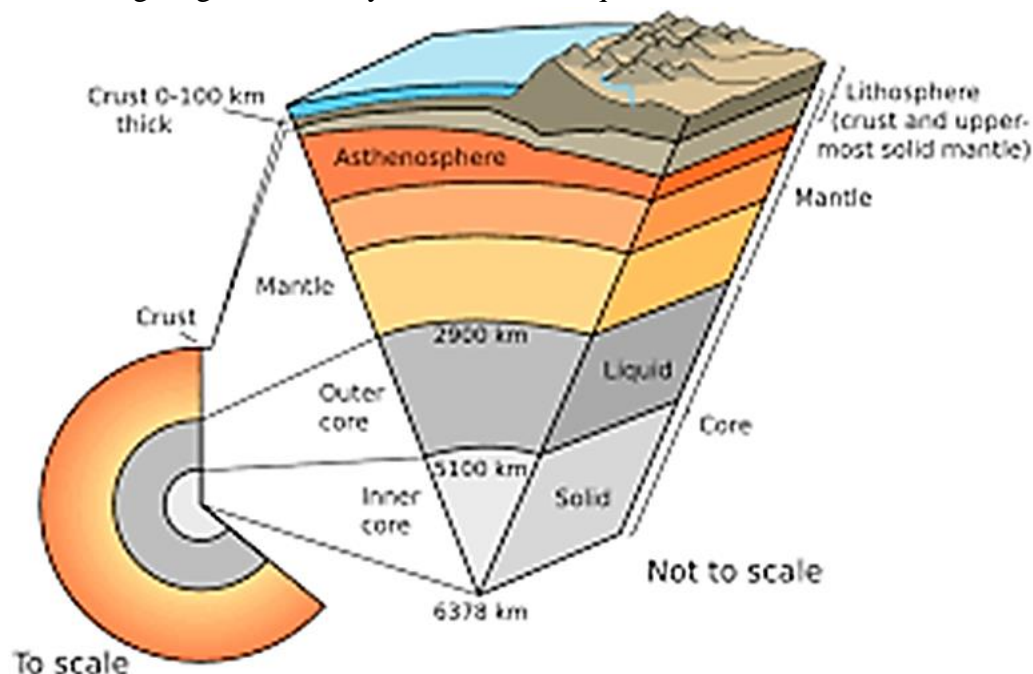
No. of questions: 10

M.M. 25

Q1. What were the forces suggested by Wegener for the movement of the continents?

Q2. Study the following diagram carefully and answer the questions that follow:

1x4=4



- | | |
|---|---|
| (i) Which is the thinnest part of Earth's interior? | 1 |
| (ii) What is the main source of magma inside the earth's surface? | 1 |
| (iii) Which of the following layers is known as NIFE? | 1 |
| (iv) Where do we find Guttenberg's and Lehman's discontinuity? | 1 |
| Q3 What do you understand by epicentre and focus | 2 |
| Q4 What do you understand by shadow zone area? Explain the p waves and s waves associated with shadow zone area | 2 |
| Q5 Explain different types of earthquakes | 2 |
| Q6 What are volcanoes? Explain different types of volcanoes & their characteristics. | 3 |
| Q7 Explain the intrusive landforms | 2 |
| Q8 Explain the uppermost layer of the earth- crust. | 2 |
| Q9 What is magma? | 2 |
| Q10 Differentiate between Body waves and Surface waves. | 2 |

Activity: Prepare an infographic

Make a list of 12 items in your home to find out where it was manufactured. Items may include clothing, pencils, books, and other products. How many of the items were manufactured in another country? Choose several items—such as desks, light fixtures, or articles of clothing—and discuss the raw materials needed to make them, the most likely place of production or manufacture, and the most likely form of transportation from the place of manufacture to the classroom.

Subject: Psychology

No. of questions: 10	M.M. 25
Q1. Humanistic psychology is developed by _____.	1
Q2. Define hypothesis.	1
Q3. What do you mean by stimulus and response?	2
Q4. Where and how do community psychologists work?	2
Q5. What is reliability?	2
Q6. What is the quasi-experiment?	2
Q7. Differentiate between:	3
i. Psychologist and Psychiatrist	
ii. A counsellor and a clinical psychologist	
Q8. What is the correlational technique, and what does it tell researchers about relationships?	4
Q9. What are the ethical concerns when conducting research with people and animals?	4
Q10. Varuna thinks that there are many beliefs and understandings of human behaviour which are not true. Give an example which justifies this statement.	4

Activity: Ask a cross-section of students about what they think Psychology is?

Draw a comparison between what they say and what the text books tells you.

What conclusion can you draw?

Subject: Physical Education

- | | |
|---|---|
| Q.1. Explain the various performance-related careers | 2 |
| Q.2 List careers available in communication media and elaborate any one. | 2 |
| Q.3. Explain the professional courses available in the field of sports administration. | 2 |
| Q.4. Apart from a professional degree in Physical Education, what other key skills are required/for
opting a career other than teaching? | 2 |
| Q.5. Write a short note on Fit India Program. | 2 |
| Q.6. Explain the selection criteria of Khelo-India Programme. | 2 |
| Q.7. What is the philosophy of Khelo-India Programme? | 2 |
| Q8. What is the vision and mission of Khelo-India Programme? | 3 |
| Q.9. When was Khelo-India Programme started? Give detail? | 3 |
| Q.10. What is the basic objective of Fit India Movement? | 5 |

Subject: Home Science

No. of questions: 10

M.M.- 25

Q1. True or False: (1.5)

- a) Home Science is only for girls.
- b) Nutrition is a part of Home Science.
- c) Home Science offers limited job opportunities.

Q2. Name any two institutions offering professional courses in Home Science. (2)

Q3. Explain how Home Science promotes gender equality. (2)

Q4. Match the following: (2)

- | | |
|----------------------------------|--------------------------|
| A. Dietetics – | i. Clothing construction |
| B. Human Development – | ii. Community service |
| C. Textile and Apparel Science – | iii. Balanced meals |
| D. Communication & Extension- | iv. Growth & development |

Q5. What skills does a Home Science student develop? Mention any four. (2)

Q6.State any two interdisciplinary linkage of Home Science (2)

Q7. Explain how knowledge of Home Science can help in disaster management. (2)

Q8. Discuss the role of Home Science in career development. (3)

Q9. Write one-line definitions for the following areas of Home Science:

- | | |
|---------------------------------|--------------------------------|
| (a) Human Development | (b) Food and Nutrition |
| (c) Resource Management | (d) Fabric and Apparel Science |
| (e) Communication and Extension | (5) |

Q10. Activity-based: Prepare a collage using pictures from newspapers or magazines showing different career paths in Home Science. (3.5)

Subject: Painting

General Instructions: Please do practical work on A-3 sheet with 2 cm borders. It is for 20 marks.

Theory needs to be done in the notebook. It is for 5 marks

M.M. 25

Q1. Draw a Still life using water colours. Use at least 4 fruits

Q2. Describe the techniques and materials used in creating prehistoric rock paintings.