



**St. Mary's School, Dwarka**

**Holiday Homework**

**Class: IX**

**Worksheet 1**

**Subject: English**

**No. of Ques:10**

**M.M:25**

**General Instructions:**

- 1) The work should be done neatly and systematically.
- 2) The given questions are to be done in the English notebook.
- 3) Attempt all questions.

**Q1. Read the passage given below and answer the questions that follow: (1x5=5)**

In today's world of technology, screens have become more dominant than ever. E-books, audiobooks, and digital articles are replacing physical books at a rapid pace. While screens offer convenience, traditional books offer something deeper. Studies have shown that readers retain more information and understand context better when reading printed material. Moreover, reading a printed book reduces eye strain, improves sleep patterns, and offers a tactile pleasure unmatched by scrolling. However, digital reading formats are undeniably helpful for people on the move. Ultimately, it may not be a question of which format is better, but rather how they can coexist in a balanced reading routine.

**i. What underlying assumption can be inferred from the comparison made between printed books and digital formats? (1)**

- a) Digital formats are inherently less engaging than printed ones.
- b) Printed books are universally preferred across all age groups.
- c) Both formats have distinct advantages that suit different contexts.
- d) Printed books are likely to become obsolete soon.

**ii. The phrase "tactile pleasure" in the passage refers to: (1)**

- |                                     |   |
|-------------------------------------|---|
| a) excitement of a fast-paced story | b) feeling satisfied with the content       |
| c) thrill of reading on a screen    | d) enjoyment of touching and feeling a book |

**iii. Digital reading is seen as suitable "for people on the move" because it \_\_\_\_\_. (1)**

- a) provides lightweight entertainment during travel
- b) saves time through faster reading techniques

- c) offers more immersive storytelling
- d) encourages people to switch from printed to digital books

**iv. Reading a printed book impacts the reader physiologically as it \_\_\_\_\_.** (1)

- a) sharpens mental focus through continuous engagement
- b) improves eyesight and speeds up memory retention
- c) calms the mind by limiting screen exposure and supporting sleep
- d) enhances multitasking abilities while reading

**v. Suggest a suitable title for the passage.** (1)

- a) The Rise and Fall of Printed Books
- b) Striking a Balance: Reading in the Digital Age
- c) The Struggle Between Digital and Print
- d) Why E-books Will Replace Paperbacks Forever

**Q2.** Imagine you participated in a community service project for the day, helping those in need. Write a diary entry in **100–120 words** describing the tasks you did, the people you met, and how the experience impacted your view on social responsibility and empathy. (3)

**Q3. Attempt the questions given as directed.** ( $\frac{1}{2} \times 4 = 2$ )

**i. Choose the correct option to fill in the blank:**

The teacher said, “You \_\_\_\_\_ finish your homework before coming to class.” (1/2)

- a) can
- b) must
- c) may
- d) should

**ii. Choose the correct option to fill in the blank:**

The storm last night \_\_\_\_\_ several trees in the neighbourhood. (1/2)

- a) uproots
- b) has uprooted
- c) uprooted
- d) was uprooting

**iii. Identify the error and supply the correction:** (1/2)

The pile of books was lying in the corner of the room.

**Error | Correction**

\_\_\_\_\_ | \_\_\_\_\_

**iv. Choose the option that supplies the correction:**

(1/2)

The members of the team has completed their tasks successfully.

Option No.	Error	Correction
A	has	have
B	of	In
C	their	Its
D	successfully	successful

**Q4. Attempt the questions given as directed.**

(1/2×4=2)

**i. Identify the error and supply the correction:**

(1/2)

The children enjoy playing in the park every evening.

**Error | Correction**

\_\_\_\_\_ | \_\_\_\_\_

**ii. Complete the narrative:**

(1/2)

The artist's painting \_\_\_\_\_ everyone who saw it.

- a) fascinates
- b) fascinated
- c) has fascinate
- d) was fascinating

**iii. Fill in the blank with the appropriate word (express past habit):**

(1/2)

When we were kids, we \_\_\_\_\_ climb trees all afternoon.

- a) were used to
- b) use to
- c) used to
- d) had use to

**iv. Identify the error in the given sentence:**

(1/2)

Each of the students have submitted their assignment.

**Error | Correction**

\_\_\_\_\_ | \_\_\_\_\_

**Q5. Read the given extract to attempt the questions that follow:**

**( $\frac{1}{2} \times 4 = 2$ )**

“Wind, come softly.  
Don’t break the shutters of the windows.  
Don’t scatter the papers.  
Don’t throw down the books on the shelf.”

**-Wind**

**i. The poet speaks to the wind, which is an inanimate object and says, ‘come softly.’ This figure of speech is called:**

- a) apostrophe                      b) simile                      c) personification                      d) irony

**ii. The tone of the poet in these lines is:**

- a) demanding and forceful                      b) sarcastic and dismissive  
c) polite yet anxious                      d) joyful and admiring

**iii. What deeper symbolic meaning might the “wind” represent in the context of these lines?**

- a) a literal gust of air from nature                      b) a metaphor for hardships in life  
c) a calm and soothing companion                      d) a symbol of wisdom and knowledge

**iv. What poetic theme is developed through the speaker’s plea to the wind?**

- a) nature as a nurturing force                      b) unpredictability of joy  
c) importance of studying books                      d) powerlessness before force

**Q6. Read the given extract to attempt the questions that follow:**

**( $\frac{1}{2} \times 4 = 2$ )**

“But the same old nightmare came—the butcher with a knife and a rope, who came nearer and nearer, smiling that dreadful smile, while she could not move, could only stand still, crying out, ‘Grandma! Grandma!’” She woke shivering to see Father beside her bed, a candle in his hand.

**The Little Girl**

**i. What emotion does the word “butcher” in the nightmare most likely symbolise?**

- a) hunger                      b) threatening authority  
c) physical illness                      d) curious imagination

**ii. What does the child’s inability to move in the dream indicate about her emotional state?**

- a) excitement at seeing her father                      b) overwhelmed by joy  
c) paralysed by fear and helplessness                      d) desire to stay in the dream

iii. The child's repeated cry of "Daddy!" is significant in the context of the nightmare as it \_\_\_\_\_.

- a) shows her regret for ignoring her father
- b) reveals a subconscious need for protection
- c) suggests anger towards her parents
- d) indicates her indifference to the threat

iv. What does this incident foreshadow regarding the girl's relationship with her father?

- a) She will permanently fear his presence.
- b) She will choose to distance herself from him.
- c) She will rebel against figures of authority.
- d) Her perception of him may change with time.

**Q7. Answer the following question in 40 to 50 words:** (2)

What values and beliefs did Bismillah Khan uphold throughout his life? Illustrate with examples from the lesson.

**Q8. Answer the following question in 40 to 50 words:** (2)

What does the bond between Grandfather and Toto reveal about human fascination with exotic animals?

**Q9. Answer the following question in 100 to 120 words:** (3)

Kezia's feelings for her father change the story. Describe this transformation, citing specific incidents that led to it.

**Q10. Create a 6–8 frame Visual Storyboard of The Little Girl**, using images and short dialogues to show how Kezia's feelings for her father change.

**OR**

Make a **Gratitude Card** for your parents, showing appreciation for their love and care, inspired by **The Little Girl's** theme of hidden affection behind authority. (2)

**Subject: Hindi**

No. of Ques:10

M.M:25

निर्देश — 1 दिए गए सभी प्रश्नों के उत्तर हिन्दी की उत्तर पुस्तिका में लिखिए।

2 सभी प्रश्नों के उत्तर पूर्ण वाक्य में लिखिए।

3 कार्य स्वच्छ शुद्ध एवं स्पष्ट लेख में कीजिए।

**प्रश्न 1 निम्नलिखित गद्यांश पर आधारित प्रश्नों के उत्तर निर्देश के अनुसार दीजिए:**

**(1×5 =5)**

ईश्वर का नाम लेकर उस पर विश्वास कर हम मन में शक्ति का एकीकरण कर कार्यरत होते हैं। हमारा विश्वास मजबूत होता है कि हमारे साथ ईश्वर है। हम इस कार्य में सफल होंगे। आत्मविश्वास को दृढ़ बनाने के लिए ईश्वर का अस्तित्व बनाया गया है। इसके साथ-साथ 'ईश्वर' की कल्पना मनुष्य को भयभीत भी करती है। एकांत में भी मनुष्य कोई पाप या गलत काम न कर सके, इसी आधार पर उसे सर्व-व्यापी, सर्व-द्रष्टा बतलाया गया है। कण-कण में उसका निवास माना गया है। मनुष्य पर नियंत्रण रखने के लिए किसी न किसी शक्ति की आवश्यकता तो है ही। इसी आधार पर ईश्वर की संकल्पना की गई और इसी प्रकार असफलताओं को रोकने के लिए, अपने दोष पर परदा डालने के लिए 'भाग्य' की भी कल्पना की गई। हम स्वयं अपने भाग्य विधाता हैं। जैसा कार्य करेंगे, वैसा फल पाएँगे। अतएव भाग्य को आप दोष न दें। चींटी को देखो वह कितनी बार चढती-गिरती है। अगर वह भाग्यवादी होती तो फिर चढ, ही न पाती। निरंतर प्रयास करके ही वह सफल होती है। वह भाग्य पर निर्भर नहीं, काम करके दिखलाती है। इसी तरह आप भी लगातार कार्य में लगे रहें। सफलता हाथ आए या फिर असफलता। आप सफलता पर प्रसन्न होकर अपनी प्रगति धीमी न करें और असफलता पर निराशा होकर या घबराकर मैदान छोड़कर न भागें। अपना कार्य बराबर आगे बढ़ते रहें। जो उद्यम करते हैं, परिश्रमरत रहते हैं, निरंतर अपने कदम का ध्यान रखते हैं, वे अवश्य ही जो भी इच्छा करते हैं उसे पा लेते हैं।

**(i) ईश्वर का अस्तित्व किसलिए बनाया गया है ?**

- (क) कमजोर आत्मविश्वास के लिए
- (ख) अच्छा जीवन जीने के लिए
- (ग) दृढ़ आत्मविश्वास के लिए
- (घ) संस्कारी जीवन जीने के लिए

(ii) ईश्वर का निवास किसमें माना गया है ?

- (क) कण-कण में
- (ख) आकाश में
- (ग) पाताल में
- (घ) स्वर्ग में

(iii) निम्नलिखित कथन (A) तथा कारण (R) को ध्यानपूर्वक पढ़कर उचित विकल्प का चयन कीजिए—

कथन (A) निरंतर प्रयास करके ही चींटी सफल होती है।

कारण (R) वह भाग्य पर निर्भर नहीं, काम करके दिखलाती है।

- (क) कथन (A) तथा कारण (R) दोनों गलत हैं।
- (ख) कथन (A) गलत है तथा कारण (R) सही है।
- (ग) कथन (A) सही है लेकिन कारण (R) गलत है।
- (घ) कथन (A) तथा कारण (R) दोनों सही हैं। तथा कारण (R) कथन (A) की गलत व्याख्या करता है।

(iv) ईश्वर की संकल्पना क्यों की गई ?

(v) मनुष्य का अपना कार्य निरंतर क्यों करते रहना चाहिए ?

**निम्नलिखित प्रश्नों के उत्तर दीजिए:**

(1×5 = 5)

प्रश्न 2 शब्द किसके मेल से बनता है? उदाहरण द्वारा स्पष्ट कीजिए।

प्रश्न 3 निम्नलिखित शब्दों में उचित स्थान पर उपयुक्त अनुस्वार का प्रयोग कीजिए :

(क) सरपच (ख) निरजन

प्रश्न 4 निम्नलिखित शब्दों में उचित स्थान पर उपयुक्त अनुनासिक का प्रयोग कीजिए :

(क) ऊचाइया (ख) अगूठा

प्रश्न 5 निम्नलिखित शब्दों में से मूल शब्द व उपसर्ग को अलग करके लिखिए:

(क) दुर्जन (ख) अपवाद

प्रश्न 6 निम्नलिखित शब्दों में से मूल शब्द व प्रत्यय को अलग करके लिखिए :

(क) मिलावट (ख) घबराहट

**प्रश्न 7 निम्नलिखित प्रश्नों के उत्तर दीजिए —**

(1½×2 = 3)

(क) 'दुख का अधिकार' पाठ के द्वारा लेखक समाज को क्या सीख देना चाहते हैं?

(ख) कवि रैदास के अनुसार ईश्वर की क्या विशेषताएँ हैं ?

**प्रश्न 8 निम्नलिखित प्रश्नों के उत्तर दीजिए —**

**( 1×2 = 2)**

**(क)** पितृ पक्ष में हमसे कुछ पाने के लिए काक बनकर अवतीर्ण क्यों होना पड़ता है?

**(ख)** लेखिका महादेवी वर्मा गिल्लू को अत्यधिक स्नेह करने के बावजूद लिफाफे में बंद क्यों कर देती थी?

**प्रश्न 9 'खेलों की ओर बढ़ता आकर्षण' विषय पर संकेत बिंदुओं के आधार पर 100 से 120 शब्दों में अनुच्छेद लिखिए।**

**(5×1=5)**

**संकेत बिंदु**

- खेलों का महत्त्व
- सोच का बदलना
- खेलों की बढ़ावा

**प्रश्न 10 घर में अनुपयोगी पदार्थों का उपयोग करते हुए एक डलिया बनाइए।**

**(5×1=5)**



**Subject: Mathematics**

**General Instructions:**

- 1) The work should be done neatly and systematically.
- 2) The given questions are to be done in the Math notebook.
- 3) Attempt all questions.

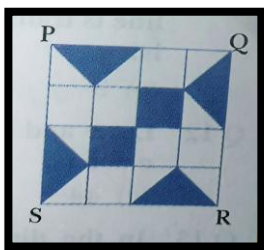
No. of questions: 10

M.M. 25

- Q1. Is -10 a rational number? Why or why not? (2)
- Q2. Write two rational numbers lie between  $\frac{1}{3}$  and  $\frac{3}{4}$  ? (2)
- Q3. Write the equivalent fraction of  $\frac{2}{3}$  ? (2)
- Q4. Give an example of a polynomial, which is:
- i) a monomial of degree 25 ii) a binomial of degree 38 (2)
- Q5. Two statements are given, one labelled as Assertion (A) and the other as Reason (R). Select the correct answer to these questions from the codes (a),(b),(c) and (d) as given below.
- a) Both A and R are true, and R is the correct explanation of A.
- b) Both A and R are true, and R is not the correct explanation of A.
- c) A is true, but R is false.
- d) A is false, but R is true.
- Assertion (A): A polynomial of degree n can have at most (n+1) terms.
- Reason (R): The degree of a polynomial represents the highest exponents of the variable. (2)
- Q6. Write the decimal expansion of  $\frac{13}{50}$  . (3)
- Q7. Convert the decimal number 5.222.... in the form of p/q. (3)
- Q8. Find p(0),p(1),p(-2) for the polynomial  $p(y) = (y+2)(y-2)$ . (3)
- Q9. Find the remainder when  $x^3 + 3x^2 + 3x + 1$  is divided by  $x - 1$  . (3)
- Q10.If  $4x-3$  is a factor of  $p(x) = 4x^3 + x^2 - 11x + 2r$ , then what is the value of r? (3)

**Activity: Square PQRS is divided into 16 smaller equal squares, as shown in the figure.**

**What fraction of PQRS is shaded?**



**Subject: Science**

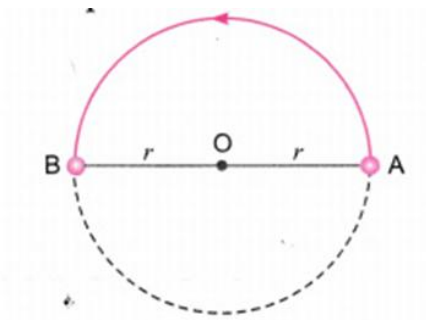
No. of questions: 10

M.M. 25

**General Instructions:**

- \* Neatly write the answers in a separate thin notebook.
- \* Attempt the questions keeping in mind the weightage of each question.

Q1. Which of the following correctly represents the displacement and total distance traveled by a particle that moves along a circular path of radius ( $r$ ), covering half of its circumference? (1)



- (A)  $2\pi r, 0$       (B)  $2r, \pi r$       (C)  $\pi r/2, 2r$       (D)  $\pi r, r$

Q2. Latent heat is measured in \_\_\_\_\_. (1)

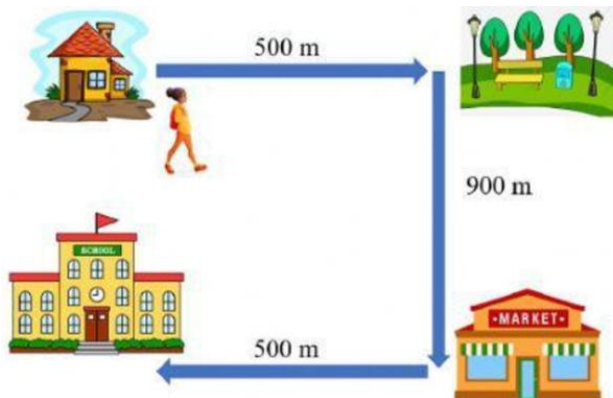
- (A)  $^{\circ}\text{C}$   
(B) kg  
(C) Joules/kg  
(D) Pascal

Q3. Assertion (A) – Organisms are made up of cells. (1)

Reason (R)- Cells are the structural and functional unit of living organisms.

- (A) Both assertion and reason are true, and reason is the correct explanation of the assertion.  
(B) Both assertion and reason are true, but the reason is not the correct explanation of the assertion.  
(C) The Assertion is true, but the reason is false.  
(D) The Assertion is false, but the reason is true.

Q4. A girl walks 500 meters east to the park, then 900 meters south to the market. From there, she turns and walks 500 meters west to reach the school, as shown in the figure below. (2)

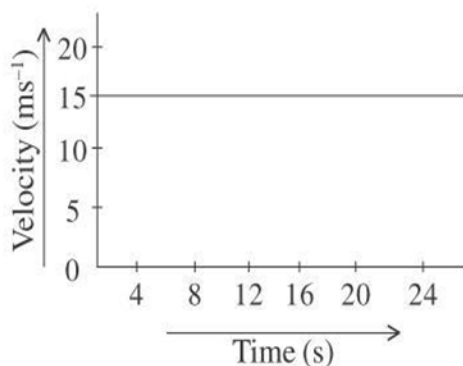


Determine:

- i) the total distance traveled along her path.
- ii) the displacement from her starting point to the school.

Q 5. Give substances X ( $125^{\circ}\text{C}$ ), Y ( $50^{\circ}\text{C}$ ) and Z ( $75^{\circ}\text{C}$ ). Predict the order of intermolecular forces. Justify your answer with reasoning. (2)

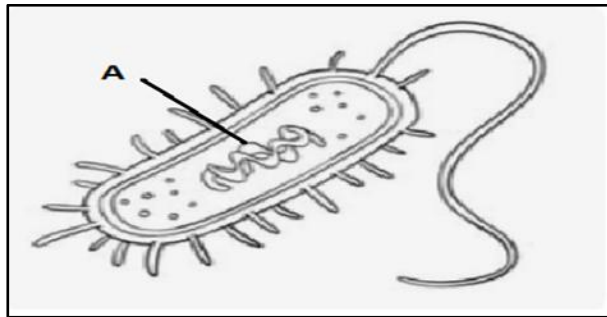
Q6. A cyclist is riding along a straight road, and the velocity-time graph below represents his journey. Using the graph, determine: (3)



- (i) the acceleration
- (ii) the velocity of the cyclist at any given point.
- (iii) the total distance covered in 12 seconds

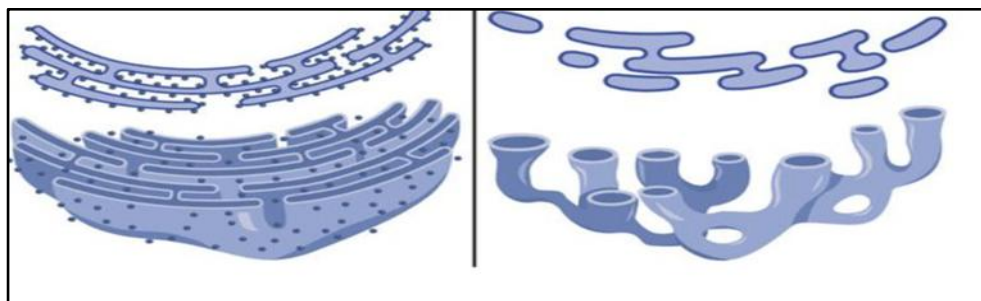
Q 7. Explain the concept of latent heat. Differentiate between latent heat of fusion and latent heat of vaporization with suitable examples. Why does temperature remain constant during a phase change even when heat is supplied? (3)

Q8. Identify the organelle as shown in the given diagram. Write any two points of difference between the region 'A' as marked in the given diagram with that of a plant cell. (3)



Q9. Inside every living cell, there is a complex network of membranes called the Endoplasmic Reticulum (ER). This organelle works like a factory and a transport system, helping the cell make and move important substances. Liver cells have a large amount of Smooth ER. Similarly, cells in the pancreas have lots of Rough ER because they need to make and secrete large amounts of proteins like digestive enzymes.

(1+1+2=4)



Questions based on the Case Study:

- A. Name the two types of Endoplasmic Reticulum and mention one function of each.
- B. Which type of ER is abundant in liver cells and why?

C. Explain the structure and role of the ER in the transport of materials inside the cell.

Q10. Activity: Investigating Latent Heat Using Household Materials (2+2+1=5)

Objective: To understand how latent heat functions during the phase change from solid to liquid using common household items.

Materials Required: Ice cubes, metal and plastic small bowl, thermometer (or digital thermometer), stopwatch (or phone timer), stove or hot water, notebook for recording data.

Procedure:

1. Place 2–3 ice cubes in a small metal and plastic bowl.
2. Insert the thermometer so its tip is in contact with the ice.
3. Place the metal and plastic bowl in a pot of hot (not boiling) water.
4. Record the temperature every 30 seconds.
5. Note the temperature during the melting process.
6. Continue recording until all ice melts and temperature starts to rise.

Based on your observations, answer the following questions:

(A). If you increase the heat source under the ice, will it melt faster? Will the melting temperature change? Explain.

(B) Why does the temperature stay the same even as you continue applying heat to the ice?

What does this tell you about energy transfer?

(C) You observe that ice in a metal bowl melts faster than in a plastic one. What could be the reason? What role does conductivity play in latent heat experiments?

**Subject: Social Science**

**General Instructions:**

- 1) The work should be done neatly and systematically.
- 2) The given questions will be in your respective subject notebooks.

No. of questions: 10

M.M. 25

- Q1. Who was the king of France at the time of the French Revolution? 1
- Q2. What was the name of the fortress prison stormed by revolutionaries on 14th July 1789? 1
- Q3. What is the name of the southernmost point of India? Why is it not visible today? 1
- Q4. Why is land considered a fixed capital of production in Palampur? 2
- Q5. What are the core features of a democratic system? 3
- Q6. Give three arguments in favour of Democracy. 3
- Q7. What does this cartoon signify? Do you think this cartoon applies to China and Mexico? 3



- Q8. How can you say that the use of modern farming methods is beneficial for Indian farmers? 3
- Q9. Explain the role of Rousseau, Montesquieu and John Locke in the French revolution. 3
- Q10. What is meant by the Green Revolution? Mention some of its important features. 5

**Activity:**

"Democracy Around the Globe" Interactive Poster(To be done on A4 sheets)

## Class 9 Worksheet 1

1. **Research & Select:** Choose three to four different democratic countries—make sure to include diverse types, like a presidential democracy (e.g., USA), a parliamentary democracy (e.g., UK or India), and a mixed system (e.g., France).
2. **Create a Visual Representation:** Design a poster with sections for each country separately.
3. **Key Aspects to Compare:**
  - Type of Democracy (Presidential, Parliamentary, or Mixed)
  - Electoral Process (How leaders are chosen)
  - Citizen Participation (Voting rights, protests, free speech)
  - Institutions & Separation of Power (How governments function)

### Creative Add-ons:

- Use symbols to represent each country's democratic strengths.
- Include a fun "Democracy Meter" rating different aspects.

**Subject: Artificial Intelligence**

**General Instructions:**

- 1) The work should be done neatly and systematically.
- 2) The given questions should be completed in the Artificial Intelligence notebook.

Choose the correct option.

(1x9=9)

1. Which of the following is the primary goal of effective communication?

- (a) To impress the receiver with your vocabulary.
- (b) To ensure the receiver understands the message as intended by the sender.
- (c) To dominate the conversation and express your opinions clearly.
- (d) To avoid any possibility of disagreement or misunderstanding.

2. Non-verbal communication includes:

- |   |   |
|---|---|
| (a) The words you choose to use.                          | (b) The clarity of your pronunciation.        |
| (c) Facial expressions, body language, and tone of voice. | (d) The grammar and syntax of your sentences. |

3. Which of the following is a common barrier to effective communication?

- |  |  |
|--|--|
| (a) Using simple and concise language.             | (b) Providing clear and specific feedback. |
| (c) Cultural differences and assumptions. speaker. | (d) Maintaining eye contact with the       |

4. Which of the following is an example of a communication channel?

- |  |  |
|--|--|
| (a) The receiver's emotional state.                | (b) A face-to-face conversation, email, or phone call. |
| (c) The sender's level of confidence. environment. | (d) Background noise in the                            |

5. Verbal communication primarily involves:

- |   |  |
|---|--|
| (a) Facial expressions and gestures.    | (b) The tone and pitch of your voice.        |
| (c) The use of spoken or written words. | (d) Physical distance between communicators. |

6. Maintaining eye contact during a conversation generally shows:

- |  |  |
|--|--|
| (a) Disinterest in what the speaker is saying. | (b) Aggression and a desire to dominate. |
| (c) Attentiveness and engagement.              | (d) Nervousness and discomfort.          |

7. Visual communication involves conveying information through:

- |  |                                    |
|--|------------------------------------|
| (a) Spoken language and tone.                      | (b) Written words and punctuation. |
| (c) Images, videos, charts, and other visual aids. | (d) Touch and physical proximity.  |



8. Using bold text or headings in a document is a technique to enhance:

- (a) Verbal communication.
- (b) Non-verbal communication.
- (c) Written communication.
- (d) Oral communication.

9. Which of the following is a key advantage of written communication?

- (a) It allows for immediate feedback and clarification.
- (b) It can convey emotions and tone effectively through voice.
- (c) It provides a permanent record of the information.
- (d) It is always faster than other forms of communication.

10. Explain the following types of communication, with the help of SmartArt

- a) Types of barriers to communication 8
- b) 7C's of effective communication

**Activity:** **8**

Using Adobe Express design an Infographics to show the visual representation of the following "Road Signs".

Note: Type [new.express.adobe.com](https://new.express.adobe.com) to log in to your Adobe account.

Your username will be your Microsoft ID( eg:- xyz1234@stmarysschooldwarka.onmicrosoft.com)

Download the infographic and upload it under the assignment created on Microsoft Teams .

**Subject: Music**

Answer the following questions:-

M.M:15

Q.1) Write the definition of Music with the help of a diagram.

2

Q.2) Draw the diagram of Saptak and show the Swaras in it.

2

Q.3) How many Saptaks are there? Explain Mandra Saptak, Madhya Saptak  
and Taar Saptak.

3

Q.4) How many types of swaras are there? Explain Shudh swara ,Komal swara  
and Tiwra swara.

3

Q.5) Explain the following

5

a) Aaroha

b) Avroha

c) Dwani

d) Naad

e) Swaras

**Subject: Home Science**

No. of questions: 10

M.M. 25

- Q1.** Which of the following minerals function by building strong bones and teeth? 1
- a) Iodine
  - b) Sodium
  - c) Calcium
  - d) Iron
- Q2.** The Women and Child Development Ministry of India have proposed to make learning Home Science compulsory for \_\_\_\_\_. 1
- a) boys
  - b) girls
  - c) both boys and girls
  - d) none of these
- Q3.** \_\_\_\_\_ is a process whereby the child learns to eat, speak, play, share and exhibits suitable behaviour in a group. 1
- a) Language development
  - b) Verbalization
  - c) Socialization
  - d) Motor development
- Q4.** Which of the two schemes runs by Govt. of India for empowering women? 1
- i. Ladli
  - ii. Kisan Vikas Patra
  - iii. Ujjwala
  - iv. Senior citizen saving scheme
- Choose the correct option from the following.
- a) i and ii
  - b) i and iii
  - c) ii and iv
  - d) iii and iv
- Q5.** Now-a-days in Indian family systems the individualism is \_\_\_\_\_ due to globalisation. 1
- a) increasing
  - b) decreasing
  - c) no impact
  - d) none of these

**Q6.** The family where head of family is a woman, and succession of property is through the female line is called \_\_\_\_\_. 1

- a) Matriarchal family
- b) Blended family
- c) Joint family
- d) Patriarchal family

**Q7. Very short answer type questions-** (5x1= 5)

- I. Name a practical skill taught in Home Science.
- II. Which subject in Home Science covers child development?
- III. What is the importance of Home Science in education?
- IV. How is biology used in home science?
- V. Give an example of applying physics in the kitchen?

**Q8. Short answer type questions-** (2x2= 4)

- I. Define human growth and development.
- II. What are the primary stages of human development?

**Activity:**

**Q9.** Make a selfie collage or a family tree in your activity file and elaborate role of each member in your family. 5

**Q10.** Observation of motor skills in a 2–3-year-old child. 5  
The students should observe and evaluate a 3-year-old child in their family or neighbourhood and fill the following table after the table is carefully filled students can discuss with the parents if the child has achieved all the developmental milestones.

Child name	
Date of birth and age	
Weight and Height at birth	
Weight and Height now	
Normal delivery or C-section	

Gross Motor Skills	Fine motor skills