



BRAIN INTERNATIONAL SCHOOL

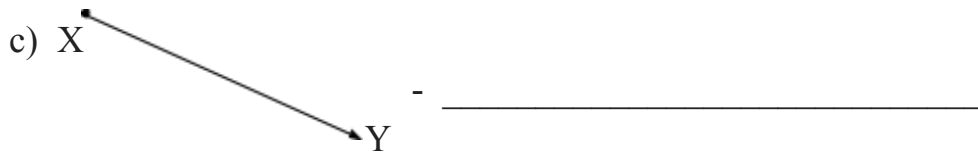
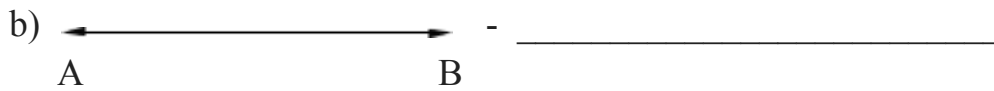
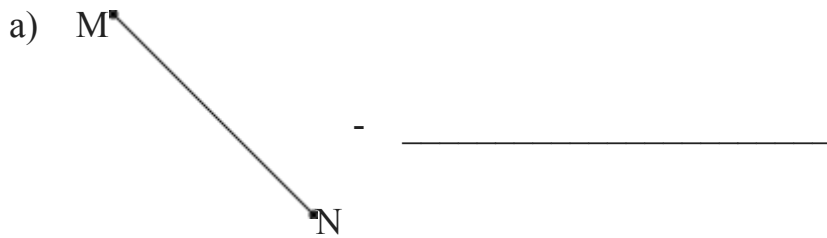
CLASS-III

CH-6 GEOMETRY

JANUARY25

NAME: _____ **CLASS:** _____ **SEC:** _____ **DATE:** _____

Q1 Name and write symbol for each of the following figures.



Q2 Draw line segment of lengths given below:

a) 7cm

b) 5cm

Q3 Draw line of symmetry if any in the following figure.

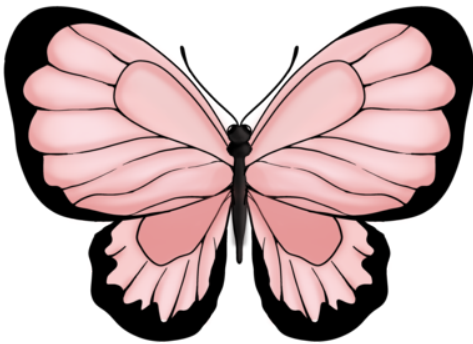
a)



b)



c)

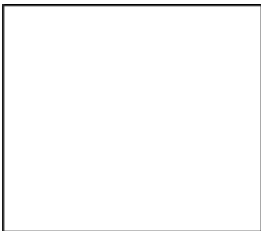


d)



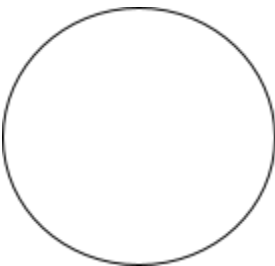
Q4 Match the shapes to its properties.

a)



No sides and no corners

b)



3 sides and 3 corners

c)

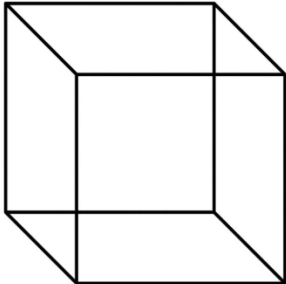


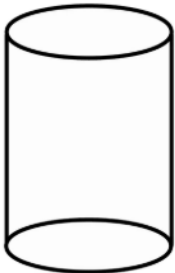
All sides equal

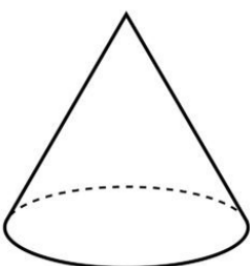
Q5 Fill in the blanks.

- a) A cube has all _____ of the same size.
- b) There are two _____ surfaces in a cylinder.
- c) Half of a sphere is called a _____.
- d) If two equal cubes are placed end to end, will we get a bigger cube or cuboid?

Q6 Write the number of faces, corners and edges of the following 3D shapes.

a)  Faces- _____
Corners- _____
Edges- _____

b)  Faces- _____
Corners- _____
Edges- _____

c)  Faces- _____
Corners- _____
Edges- _____

Q7 Q7 **DIRECTION** : In the following question, a statement of **Assertion (A)** is followed by a statement of **Reason (R)** . Choose the correct option.

- a) Both Assertion and Reason are true and Reason is a correct explanation of Assertion.
- b) Both Assertion and Reason are true and Reason is not a correct explanation of Assertion.
- c) Assertion is true but Reason is false.
- d) Assertion is false but Reason is true.

Assertion (A): Sphere is a shape that has no corners and 1 curved face.

Reason(R) : Solid shapes are the shapes that have faces, edges and vertices.