



BRAIN INTERNATIONAL SCHOOL

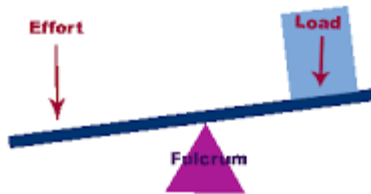
EVS WORKSHEET CLASS-V NOVEMBER 2024

NAME: _____ **CLASS:** _____ **SEC:** _____ **DATE:** _____

CH-19 SIMPLE MACHINES

Q1. Tick the correct option:

- Machines have made our lives very
(i) **uneasy and uncomfortable** (ii) **easy and comfortable**
(iii) **both (i) and (ii)** (iv) **none of these**
- When a long plank or pole is used to lift a large load, it is called a _____.
(i) **lever** (ii) **fulcrum** (iii) **force** (iv) **none of these**
- Name the class of lever:



Q2. Write 'T' for True and 'F' for False statements.

- Class-III lever has the load between the effort and the fulcrum.
- A sewing machine uses a wheel and axle.
- Archimedes of Syracuse was an ancient scientist and inventor.

Q3. Define the following:

- (i) **Wedge**

Q4. Why do we have to use force to lift any object? What do machines do to the force you apply?

Q5. Assertion & Reasoning Based question:

Assertion: Wheel is not a machine by itself.

Reason: when an inclined plane is attached to the wheel it becomes a simple machine.

A

A is true but R is false.

B

A is false but R is true.

C

Both A and R are true and R is the correct explanation for A.

D

Both A and R are true but R is not the correct explanation for A.

Q6. Read the following and answer the questions.

Machines makes our lives very easy by making impossible things possible. However, nowadays we are getting used to performing all our work using machines. This sometimes is bad for our health since we do not get enough exercise.



Q1. How machines have made our lives easy?

Q2. Using too much of machines make our life healthy? (Yes / No) _____



BRAIN INTERNATIONAL SCHOOL

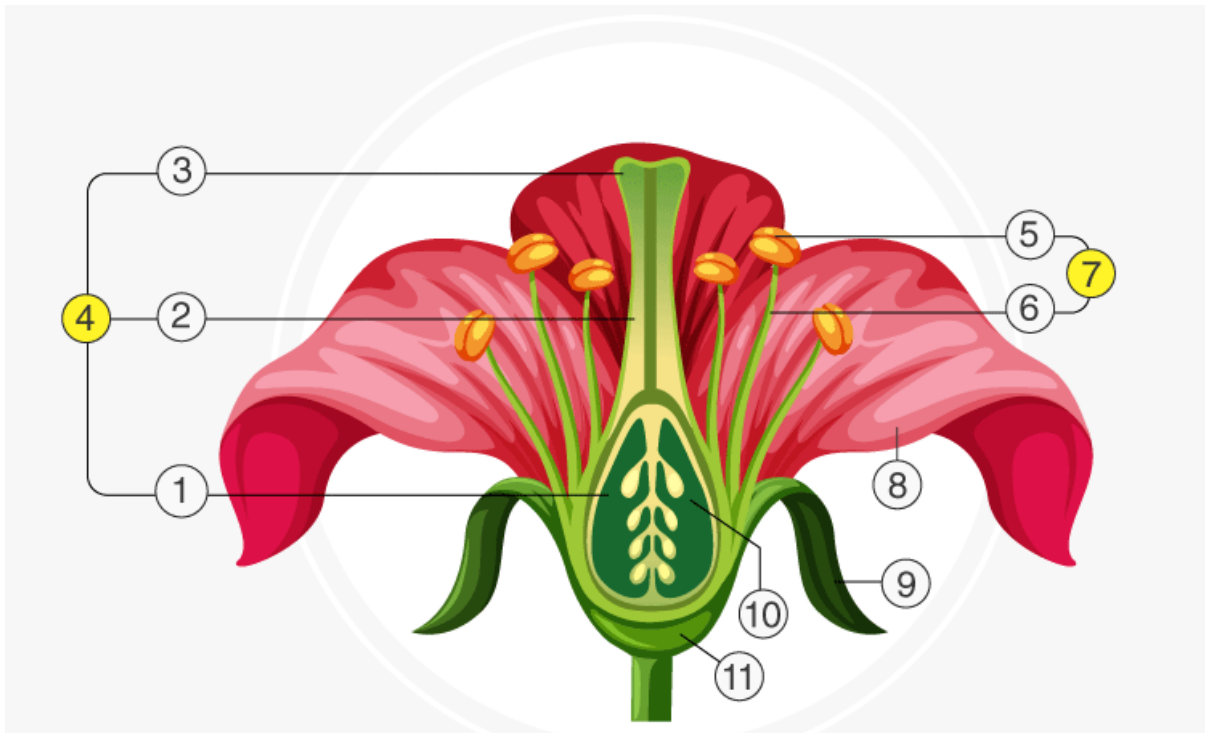
EVS WORKSHEET CLASS-V NOVEMBER 2024

NAME: _____ CLASS: _____ SEC: _____ DATE: _____

CH-23 STUDY OF PLANTS

Q1. Tick the correct option:

- _____ grows new plants from its leaves.
(i) potato (ii) carrot (iii) spinach (iv) bryophyllum
- _____ exchange the gases in leaf.
(i) stomata (ii) main veins (iii) stem (iv) none of these
- Name the structure of a flower



Q2. Write 'T' for True and 'F' for False statements.

- Cotyledons store food for the embryo.
- Seeds have an inner covering called the seed coat.
- A plumule produce stem and leaves.

Q3. Define the following:

(i) Gamete

Q4. How do you think climbers are different from creepers.

Q5. Assertion & Reasoning Based question:

Assertion: The stem has many tube-like structures inside it.

Reason: The stem bears branches on which leaves and flowers grow.

- A
A is true but R is false.
- B
A is false but R is true.
- C
Both A and R are true and R is the correct explanation for A.
- D
Both A and R are true but R is not the correct explanation for A.

Q6. Read the following and answer the questions.

Making seeds can be a long and complicated process. Some plants reproduce in another way, where a new plant grows from different parts of the parent plant like roots, stems or leaves which is known as vegetative reproduction. For eg- rose plant, potato, etc.



Q1. What is vegetative reproduction?

Q2. Name any two plants that grows from different parts of the parent plant.