

# **BRAIN INTERNATIONAL SCHOOL**

**Science Assignment**

**Class: VII**

**October'2024**

## **Chapter -7: Transportation in Animals and plants**

### **1. Choose the correct option:**

- (i) The absorption of nutrients and exchange of respiratory gases between blood and tissues takes place in  
(a) Arteries      (b) Veins      (c) Capillaries      (d) None of these
- (ii) A certain type of cells, helps in destruction of disease causing microorganisms are known as  
(a) RBC      (b) WBC      (c) Thrombocytes      (d) None of these

### **2. In each of the following questions, two statements are given- one labelled Assertion (A) and the other labeled Reason (R). Select the correct answer to these questions from the codes (a), (b), (c) and (d) as given below:**

- a) Both A and R are true, and R is correct explanation of the assertion.  
b) Both A and R are true, but R is not the correct explanation of the assertion.  
c) A is true, but R is false.  
d) Both assertion and reason are false.
- (i) Assertion (A): Arteries have a thick elastic wall.  
Reason (R): In arteries blood flow is rapid and at high pressure.
- (ii) Assertion (A): Heart is a tissue which acts as a pump.  
Reason (R): Heart is roughly the size of a human fist.

### **3. Answer the following questions:**

1. Waste carbon dioxide and urea are removed from our body by which organs?
2. RBC contains a red coloured pigment which carries oxygen with it. What is the pigment called?
3. Why is pulmonary artery called an artery if it does not carry oxygen-rich blood?
4. What is the relation between the rate of heartbeat and pulse rate? If a pulse rate of an athlete is 96/min, what will be the number of his heartbeat at the same time?
5. Draw the well labelled diagram of Human excretory system.
6. Like humans and animals, transportation of water, mineral and nutrients also take place in plants. How?

## Chapter-8: Reproduction in plants

### 1. Choose the correct option:

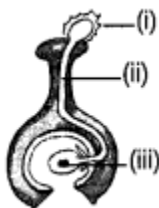
- The ovaries of different flowers may contain.  
(a) one ovule (b) two ovule  
(c) one to many ovule (d) no ovule
- Which among the following have hairs on seed?  
(a) Drumstick (b) Cotton (c) Maple (d) Aak

### 2. In each of the following questions, two statements are given- one labelled Assertion (A) and the other labeled Reason (R). Select the correct answer to these questions from the codes (a), (b), (c) and (d) as given below:

- Both A and R are true, and R is correct explanation of the assertion.
  - Both A and R are true, but R is not the correct explanation of the assertion.
  - A is true, but R is false.
  - Both assertion and reason are false.
- (i) Assertion (A): A flower may either have a male or a female part.  
Reason (R): A flower having both male and female parts is called a bisexual flower.
- (ii) Assertion (A): Yeast grows and multiplies every few hours if sufficient nutrients are available.  
Reason (R): When water and nutrients are available algae grow and multiply rapidly through budding.

### 2. Answer the following questions:

- Name two plants in which pollination occurs by water?
- Pollen grains are present inside anthers for long time yet they do not die. Why?
- When you keep food items like bread and fruits outside for a long time especially during the rainy season, you will observe a cottony growth on them.  
(a) What is this growth called?  
(b) How does the growth take place?
- In the figure given below, label the part marked (i), (ii) and (iii).



- Mention the benefits of seed dispersal.
- Insects are called agents of pollination. How do they aid in process of pollination?

