



BRAIN INTERNATIONAL SCHOOL

SESSION 2024-25

CLASS: III

TERM 1 REVISION SHEET-1

SUBJECT: EVS

Q.1 Do as directed.

- a) Plants give us carbon-di-oxide to breathe. (**True or False**) - _____
- b) What does 'photo' in the word photosynthesis mean? (**Circle the correct option**).
- (i) light (ii) leaf (iii) picture (iv) sunlight
- c) The wings of the birds are attached to the _____ with powerful muscles. (**Fill in the blank**)

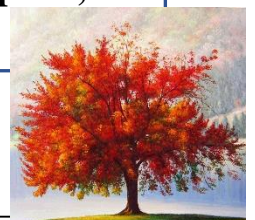
Q.2 Why do we need food?

Q.3 Define energy giving food.

Q.4 Read the passage carefully and answer the following.

There are different types of plants. Some plants have strong thick woody stem called trunk. Some plants have very weak stem and need support to grow, they are called climbers. Some examples of climbers are money plant, grapevine, pea plant etc.

- a) Define climbers with examples.



b) What is the thick woody stem of the tree called?

Q.5 **ASSERTION:** All food chains begin with animals.

REASON: All animals on the earth depend directly or indirectly on plants for food.

A

Only A is correct.

B

Both A and R are correct and R is the correct explanation for A.

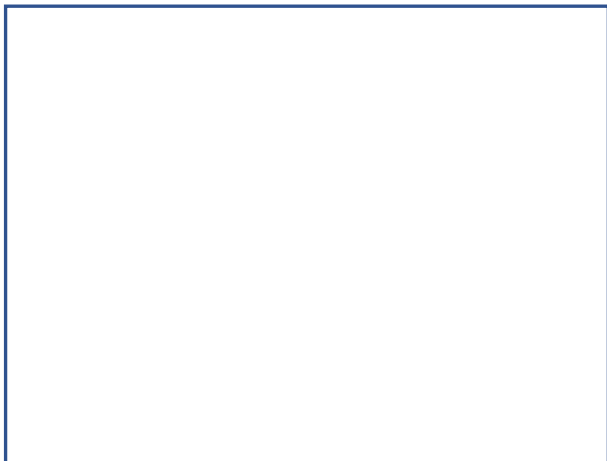
C

Only R is correct.

D

Both A and R are correct but R is not the correct explanation for A.

Q.6. **Draw, colour and label any two types of plants.**





BRAIN INTERNATIONAL SCHOOL

SESSION 2024-25

CLASS: III

TERM 1 REVISION SHEET-2

SUBJECT: EVS

Q.1 Do as directed.

- a) Drinking water is important for good health. **(True or False)** _____
- b) Green leafy vegetables and fruits are examples of _____ **(Circle the correct option).**
- | | |
|---------------------------------|-----------------------------|
| (i) Energy giving food | (ii) Protective food |
| (iii) Body building food | (iv) None of these |

Q.2 Name the following.

- a) The smallest bird _____
- b) The largest bird _____

Q.3 Define mammals.

Q.4 Read the passage carefully and answer the following.

Plants are the living things that grow in the ground. They have roots, stems, leaves, flowers and fruits. Plants need sunlight, water and air to grow. They make their own food with water and carbon-di-oxide in the presence of sunlight to prepare their food.

- a) What does a plant need to prepare its food?

b) Plants give out oxygen.

- (i) True (ii) False

Q.5 **ASSERTION:** We should wash our hands before and after meals.

REASON: Tiny harmful germs get washed away with soap and water.

A

Only A is correct.

B

Both A and R are correct and R is the correct explanation for A.

C

Only R is correct.

D

Both A and R are correct but R is not the correct explanation for A.

Q.6. Write any four uses of plants.



BRAIN INTERNATIONAL SCHOOL

SESSION 2024-25

CLASS: III

TERM 1 REVISION SHEET-3

SUBJECT: EVS

Q.1 Do as directed.

- a) We get pulses as the seeds of plants. (**True or False**) _____
- b) _____ is the main cereal used in North India. (**Circle the correct option**)
- (i) Rice (ii) Wheat (iii) Millets (iv) Jowar

Q.2 Name any two medicinal plants.

Q.3 What is a balanced diet?

Q.4 ASSERTION: Chilli is a fruit and not a vegetable.

REASON: Chilli is a fruit and not a vegetable as it has seeds in it.

A

Only A is correct.

B

Both A and R are correct and R is the correct explanation for A.

C

Only R is correct.

D

Both A and R are correct but R is not the correct explanation for A.

Q.5 Read the passage carefully and answer the following.

All birds make their own nest to live. The tailor bird makes its nest by sewing two leaves together. It uses its beak as a needle. The nest is lined with wool, dried grass and cotton to make it warm.

a) How does a tailor bird makes its nest?



b) The beak of the tailor bird is like a _____. (Fill in the blank)

Q.6 Define pigment.

Q.7. Draw, colour and label the food chain of birds.

A large, empty rectangular box with a blue border, intended for drawing, coloring, and labeling a food chain of birds.