



St. Mary's School, Dwarka
Holiday Homework
Class IX
Worksheet 4
Subject: English

General Instructions:

- 1) The work should be done neatly and in a systematic way.
- 2) The given questions are to be done in the English notebook.
- 3) Attempt all questions.

Q1. Read the following passage.

(1x5=5)

The habit of reading is one of the greatest resources of mankind and we enjoy reading books that belong to us much more than if they are borrowed. A borrowed book is like a guest in the house; it must be treated with punctiliousness, with a certain considerate formality. You must see that it sustains no damage, it must not suffer while under your roof. You cannot leave it carelessly, you cannot mark it, you cannot turn down the pages and you cannot use it familiarly. And then, someday, although this is seldom done, you return it. Your own books are yours to treat with love and familiarity, not formality. Books are for use, not for show, you should own no book that you are afraid to mark up, or afraid to place on the table, wide open and face down.

A good reason for marking favourite passages in books is that this practice enables you to remember more easily the significant sayings and to refer to them quickly in later years. It is like visiting a forest where you once blazed a trail. You have the pleasure of going over the old ground and recalling both the intellectual scenery and your own earlier self.

Everyone should begin collecting a private library in youth; the instinct of private property which is fundamental in human beings, can here be cultivated with every advantage and no evils. One should have one's own bookshelf, which should not have doors, glass windows or keys; they should be free and accessible to the hand as well as to the eye. The best mural decorations are books; they are more varied in colour and appearance than any wallpaper, they are more attractive in design, and they have the prime advantage of being separate personalities, so that if you sit alone in the room in the firelight you are surrounded with intimate friends. The knowledge that they are there in plain view, is both stimulating and

Class IX Worksheet 4

refreshing. Our devotion to reading will never make us a recluse. Sometimes we cannot always see our personal friends, but in a private library, we can, at any moment converse with our favourite author.

On the basis of your understanding of the passage, answer the following questions. (1x5=5)

1. Why do people enjoy reading books they own more than borrowed books? (1)

2. A benefit of marking your favourite passage is that it enables us to _____. (1)

(i) remember the significant sayings easily

(ii) quickly refer to the marked portion later

(iii) make relevant questions when required

(iv) write our book according to our desires

(a) only (i)

(b) both (i) and (ii)

(c) (i), (ii) and (iv)

(d) (i), (ii) and (iii)

3. Which one of the following statements is NOT true according to the passage? (1)

(a) Books are meant to be utilized, not merely displayed on a bookshelf.

(b) Our pleasure in reading is heightened when the books are our own rather than borrowed.

(c) Marking favourite passages helps us to remember the significant sayings.

(d) The author possesses six thousand books, all of which he has read twice.

4. Find the word from the passage that means 'a person who lives in isolation'

(1)

(a) formality

(b) familiarly

(c) recluse

(d) blazed

v. Suggest a suitable title for the above passage. (1)

(a) Discover the Author within You

(b) Talk to Your Favorite Author

(c) Books: The Best Show Piece

(d) Build Your Own Bookshelf

Q2. Using the information given below, write the bio-sketch of A.R. Rahman, a famous Indian composer, in about 100 words. Provide a suitable title for the bio-sketch. (5)

Class IX Worksheet 4

Born - Dileep Kumar-January, 1966, in Chennai, Tamil Nadu rises success as A.R. Rahman, music director and singer.

Family- loses father at an early age; mother's influence great

Trained- Under Master Dhanraj and Illaiyaraja

Education- Graduate in Western classical music from Trinity College of Music

Significant year -1992 sets up a recording studio; film career begins.

Achievements and Awards-Fourteen Film Fare, four National Films, two Grammys, two Academy, etc. Padma Bhushan in 2010.

Contribution to music- immense; a national icon

Q3. Read the conversation given below and complete the paragraph that follows. (1/2x4 =2)

Ramesh: Where are you going?

Shreya: I am going to school to collect my result sheet.

Ramesh: How much did you score?

Shreya: I scored good marks in all the subjects except in Mathematics.

Ramesh asked Shreya (a) _____.She said that she (b)_____ her result sheet. Ramesh then wanted to know (c)_____.Shreya said that (d)_____ except in Mathematics.

Q4. Fill in the blanks with the correct form of the words given in the bracket. (1/2x4=2)

Richard Fox (a)_____(live) in a small city in Hong Kong. Now he lives in England. He (b) _____(like) England because of its convenient location in Europe which (c)_____ (allow) him to visit many countries in the region. He says that living in a city like England is very different from the small town in Hong Kong where he was (d) _____ (bring) up. His short stay in England has given him a broader outlook on life.

Q5. Answer the following in 20-40 words. (2)

“I had learned to open my mind and body to sounds and vibrations,” says Evelyn. How did she do this?

Q6. Answer the following in 60-80 words. (3)

The wind is a symbol of power and strength. How can we befriend it and survive in our struggle for existence?

Q7. “The newspaper is a greater treasure to the people than uncounted millions of gold.”— Henry Ward Beecher

Class IX Worksheet 4

Design your own newspaper (A-3 size sheet) and give it a suitable name. The newspaper should have five sections:- (5)

1. New words added to the dictionary.
2. Creative corner- Any original story or poetry
3. Quotes by famous writers and poets along with their names
4. Literary awards
5. Literary games and puzzles

Subject: Hindi

प्रश्न 1 निम्नलिखित गद्यांश पर आधारित प्रश्नों के उत्तर निर्देश के अनुसार दीजिए: (1×5=5)

किसान हमारे समाज की रीढ़ हैं। वे ही हैं जो हमें वह सब भोजन प्रदान करते हैं जो हम खाते हैं। परिणामस्वरूप, देश की पूरी आबादी किसानों पर निर्भर करती है। यह सबसे छोटा या सबसे बड़ा देश हो। उनकी वजह से ही हम ग्रह पर रह पा रहे हैं। इस प्रकार किसान दुनिया के सबसे महत्वपूर्ण लोग हैं। हमारे समाज में किसानों का बहुत महत्व है। वे ही हैं जो हमें खाने के लिए भोजन प्रदान करते हैं। चूंकि प्रत्येक व्यक्ति को अपने जीवन यापन के लिए उचित भोजन की आवश्यकता होती है, इसलिए वे समाज में एक आवश्यकता हैं। किसानों के विभिन्न प्रकार हैं और इन सभी का समान महत्व है। सबसे पहले वे किसान हैं जो गेहूं, जौ, चावल आदि की फसल उगाते हैं, क्योंकि भारतीय घरों में इसका अधिकतम सेवन गेहूं और चावल का होता है। तो, खेती में गेहूं और चावल की खेती ज्यादा होती है। इसके अलावा, इन फसलों को उगाने वाले किसानों का मुख्य महत्व है। दूसरा, वे हैं जो फलों की खेती करते हैं। इन किसानों को विभिन्न प्रकार के फलों के लिए मिट्टी तैयार करनी होती है। क्योंकि ये फल मौसम के अनुसार बढ़ते हैं। इसलिए किसानों को फलों और फसलों के बारे में अच्छी जानकारी होनी चाहिए। कई अन्य किसान हैं जो विभिन्न प्रकार के विकास करते हैं। इसके अलावा, अधिकतम कटाई प्राप्त करने के लिए उन सभी को बहुत मेहनत करनी होगी। किसानों का भारतीय अर्थव्यवस्था में लगभग 17% का योगदान है। वह सब से अधिकतम है। लेकिन फिर भी, एक किसान समाज के हर विलासिता से वंचित है।

इसके अलावा, किसानों की सबसे खराब स्थिति का एक कारण ग्लोबल वार्मिंग है। चूंकि ग्लोबल वार्मिंग हमारे ग्रह को हर तरह से बाधित कर रहा है, यह हमारे किसानों को भी प्रभावित करता है। ग्लोबल वार्मिंग की वजह से मौसम में देरी होती है। जैसे-जैसे विभिन्न फसलों के पकने का अपना मौसम होता है, उन्हें पोषण नहीं मिल रहा है। फसल को उगाने के लिए उचित धूप और बारिश की आवश्यकता होती है। इसलिए अगर फसलें नहीं मिल रही हैं तो वे नष्ट हो जाती हैं। अंत में, खेती एक ऐसा पेशा है जो कठिन परिश्रम और प्रयास करता है। इसके अलावा हमारे देश की बढ़ती आबादी को देखते हुए हमें अपने देश के किसानों की मदद करने के लिए पहल करनी चाहिए।

(i) भारतीय घरों में इसका अधिकतम सेवन किस अनाज का होता है?

- (क) गेहूं और चावल का
- (ख) चना और मटर का
- (ग) दाल और चावल
- (घ) बाजरा और चना

(ii) समाज की रीढ़ किसे कहा गया है?

- (क) राजनेताओं को
- (ख) सैनिकों को
- (ग) किसानों को
- (घ) डॉक्टर को

(iii) निम्नलिखित कथन (A) तथा कारण (R) को ध्यानपूर्वक पढ़िए तथा दिए गए विकल्पों में से कोई एक सही विकल्प चुनकर लिखिए।

कथन (A) किसानों की सबसे खराब स्थिति का एक कारण ग्लोबल वार्मिंग है।

कारण (R) ग्लोबल वार्मिंग की वजह से मौसम में देरी होती है।

1 कथन (A) तथा कारण (R) दोनों गलत हैं।

2 कथन (A) गलत है परन्तु कारण (R) सही है।

3 कथन (A) सही है परन्तु कारण (R) गलत व्याख्या करता है।

4 कथन (A) और कारण (R) दोनों सही हैं परन्तु कथन कारण की सही व्याख्या नहीं करता है।

(iv) गद्यांश में कितने प्रकार के किसानों वर्णन किया गया है? उनके बारे में बताइए।

(v) गद्यांश में प्रयुक्त 'इय' प्रत्यय युक्त शब्द ढूँढकर लिखिए।

निम्नलिखित प्रश्नों के उत्तर निर्देश के अनुसार दीजिएः

(1×5 =5)

प्रश्न 2 पद किसके नियमों में बँधे होते हैं?

प्रश्न 3 निम्नलिखित शब्दों में उचित स्थान पर उपयुक्त अनुस्वार का प्रयोग कीजिए :

(क) अकल (ख) प्रबध

प्रश्न 4 निम्नलिखित शब्दों में उचित स्थान पर उपयुक्त अनुनासिक का प्रयोग कीजिए :

(क) झाक (ख) काख

प्रश्न 5 निम्नलिखित शब्दों में से मूल शब्द व उपसर्ग को अलग करके लिखिए:

(क) निडर (ख) अधिनायक

प्रश्न 6 निम्नलिखित शब्दों में से मूल शब्द व प्रत्यय को अलग करके लिखिए :

(क) बुढ़िया (ख) बेटी

प्रश्न 7 निम्नलिखित प्रश्नों के उत्तर दीजिए —

(1½×2 = 3)

(क) मृत्यु के अवसाद को देखकर कर्नल खुल्लर ने क्या कहा?

(ख) रैदास के दूसरे पद का प्रतिपादय लिखिए।

प्रश्न 8 निम्नलिखित प्रश्नों के उत्तर दीजिए —

(1×2= 2)

(क) लेखक ने चिट्ठियाँ निकालने के लिए क्या प्रयास किए?

(ख) गिल्लू की किन चेष्टाओं से यह आभास मिलने लगा था कि अब उसका अंत समय समीप है?

प्रश्न 9 दिए गए चित्र का वर्णन 100 शब्दों में लिखिए।

(5×1=5)



गतिविधि :

प्रश्न 10 अपने प्रिय पशु की आकृति बनाते हुए चाबी का छल्ला बनाइए।

(5×1=5)

Subject: Mathematics

General Instructions:

- 1) The work should be done neatly and in a systematic way.
- 2) The given questions are to be done in the Math practice notebook.
- 3) Attempt all questions.

- Q1. What is the value of $(256)^{0.16} \times (256)^{0.09}$? (2)
- Q2. State if zero is a rational number. Justify your statement by representing it in p/q where q is not equal to 0 and p and q are both integers. (2)
- Q3. Find out 5 different rational numbers between $12/11$ and $10/11$. (2)
- Q4. Simplify: $[(82 + 92) \div 2] \times 2$ (2)
- Q5 Factorise $6x^2 + 17x + 5$ by splitting middle term. (2)
- Q6. If $x = 3 + 2\sqrt{2}$, find the value of $x^2 + 1/x^2$ (3)
- Q7. Express the following numbers in the form of p/q
- (a) 25.6875
 - (b) 0.621621621... (3)
- Q8. Write one rational & one fractional number between 0.515115111.... and 0.535335333.... (3)
- Q9. Write one example each of two irrational numbers whose:
- (a) Sum is a rational number
 - (b) Product is an irrational number
 - (c) Difference is an irrational number
 - (d) Quotient is a rational number (3)
- Q10. Simplify $[(625)^{-1/2}]^{-1/4} \times 2$ (3)

Subject: Science

General Instructions:

- 1) Neatly write all the answers in your science notebook.
- 2) Attempt the questions keeping in mind the weightage of each question

- Q1. Which of the following is represented by a parallel straight line in the velocity-time graph? (1)
- (a) Acceleration is zero
 - (b) Acceleration is constant
 - (c) Velocity is zero
 - (d) The object is at rest

Q2. Temperature scale can be converted from degree Celsius to Kelvin with the formula

$$K = ^\circ C + 273$$

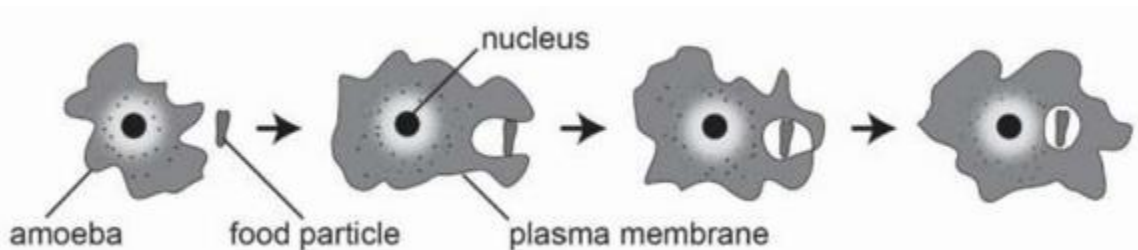
- (a) 124 K
- (b) 159K
- (c) 351 K
- (d) 373 K

Q3 is Assertion - Reasoning based questions. These consist of two statements – Assertion (A) and Reason (R). Answer these questions selecting the appropriate option given below:

- (a) Both A and R are true and R is the correct explanation of A
- (b) Both A and R are true and R is not the correct explanation of A
- (c) A is true but R is false
- (d) A is false but R is true

Q3. **Assertion(A):** An iron rod undergoes expansion on heating. (1)
Reason (R): Solids show maximum thermal expansion.

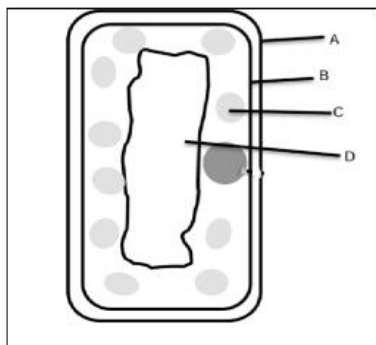
Q4. Observe the given diagram showing endocytosis in amoeba. Explain in detail the property of the plasma membrane that helps amoeba to acquire food. (2)



Q5. A train is travelling at a speed of 90 km/h. Brakes are applied to produce a uniform acceleration of -0.5 m/s^2 . Calculate how far the train will go before it is brought to rest. (2)

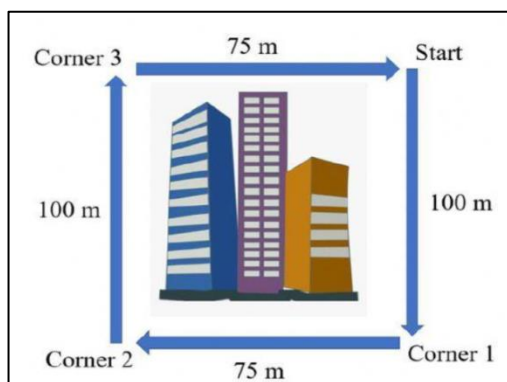
Class IX Worksheet 4

Q6. The given figure shows a plant cell. Name the parts of the cell labelled A to D and describe the functions of C and D. (3)



Q7. ‘Modern refrigeration systems work on the principle of evaporation’. Collect information on how a refrigerator system works and present it in the form of a graphic organizer. (3)

Q8. A student walked around the city block as shown in the figure below. She started at the northeast corner. She walked from start to corner 1, then to corner 2, then to corner 3, and returned to start. (3)



Calculate the distance and displacement for the following cases:

Path of travel	Distance d (m)	Displacement Δx (m)
Start → Corner 1	<input type="text"/>	<input type="text"/>
Start → Corner 2	<input type="text"/>	<input type="text"/>
Start → Corner 3	<input type="text"/>	<input type="text"/>
Start → Start	<input type="text"/>	<input type="text"/>

Q9. Dry ice, a solid form of carbon dioxide, has several fascinating applications. It is ideal for keeping perishable items like food, pharmaceuticals and biological samples frozen during transport. It is especially useful where mechanical cooling is not available or practical. In the entertainment industry, dry ice is used to create dramatic fog effects on stage and in movies. This effect is popular in theatres, haunted houses, and concerts to enhance the visual experience. These applications take advantage of dry ice’s unique properties, such as its low temperature and ability to change directly from a solid to a gas.

Class IX Worksheet 4

Due to its extreme cold, handling dry ice requires proper safety measures to prevent frostbite or other injuries.

- (a) Write any two properties of dry ice that makes it more suitable than mechanical cooling for the transportation of perishable goods?
- (b) State two safety precautions that should be taken when handling dry ice to prevent injuries.
- (c) Describe how dry ice is used to create special effects in the entertainment industry.

OR

- (d) Write four advantages of using dry ice over other methods for producing fog effects on stage or in films? (4)

Q10. Activity: Making Ice Cream in a Bag

Objective: To demonstrate the conversion of liquid to solid through freezing and understand the role of salt in changing the freezing point of water.

Materials:

- 1 cup of milk
- 2 tablespoons of sugar
- 1/2 teaspoon of vanilla extract
- Ice cubes
- 6 tablespoons of rock salt
- 1 pint-sized zip lock bag
- 1 gallon-sized zip lock bag
- Gloves or a towel to protect hands from the cold

Procedure:

- (i) Preparation: In the pint-sized zip lock bag, pour the milk, sugar, and vanilla extract. Seal the bag tightly. Fill the gallon-sized zip lock bag halfway with ice cubes and sprinkle the rock salt over the ice.
- (ii) Mixing: Place the pint-sized bag with the ingredients into the gallon-sized bag with ice and salt. Seal the larger bag securely.
- (iii) Freezing Process: Shake the bags vigorously for about 5 minutes. Use gloves or a towel to hold the bags as they will get very cold. The mixture in the smaller bag should start to harden and take on the consistency of ice cream.
- (iv) Observation: After 5 minutes, check the consistency of the mixture. If it's not ice cream-like, shake for a few more minutes.
- (v) Enjoy the delicious ice cream!!

Answer the following questions:

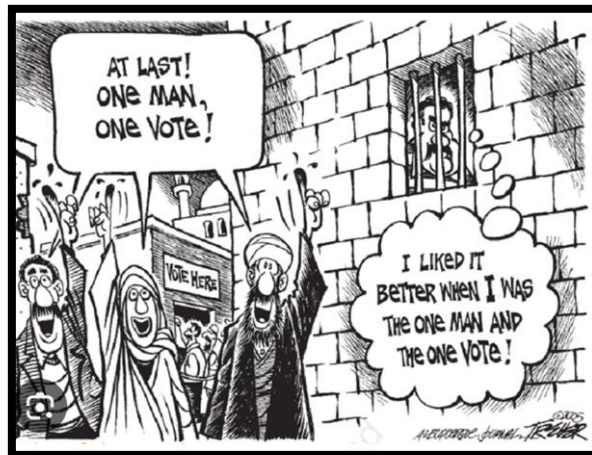
- (i) Explain the role of rock salt in the formation of ice-cream in the above activity.
- (ii) Name any three other substances that can be used instead of salt in the similar activities. Also write one practical application of each. (5)

Subject: Social Science

General Instructions:

- The work should be done neatly and in a systematic way.
- The given assignment is to be done in the respective notebooks.
- Write all the questions along with the answers.
- Maps and diagrams are to be pasted/done in the notebook.

- Q1. By the nineteenth century what changes occurred in the idea of conservatives? (1)
- Q2. Who was Louis Blanc? (1)
- Q3. Why 82 degree 30'E has been selected as Standard Meridian of India? (1)
- Q4. Assume that you have recently travelled in the Indian desert. Describe the desert to a person not living in India. (2)
- Q5. Make a comparison between the Shiwaliks and Himachal Himalayas based on the following:
- (i) Composition
 - (ii) Age
 - (iii) Altitude (3)
- Q6. What does the following cartoon signify? (3)



- Q7. "Although having a democratic system, Pakistan was not practicing democracy". Elucidate. (3)
- Q8. What are the main factors for production of goods and services? (3)
- Q9. On what terms did Savita get a loan from Tejpal Singh? Would Savita's condition be different if she could get a loan from the bank at a lower rate of interest? (3)
- Q10. What is the role of philosophers in the French Revolution? What was the condition of women in France before the revolution? (5)

Subject: Artificial Intelligence

Attempt the MS-FORM Link mentioned below.

(10)

<https://forms.office.com/r/mrdgDRbUzY>

OR

Scan the QR code to access the MS-FORM



Subject: Home Science

Q1. Which nutrient is most essential for the growth and repair of body tissues? (1)

- a) Carbohydrates
- b) Proteins
- c) Fats
- d) Vitamins

Q2. Which of the following is a good source of omega-3 fatty acids? (1)

- a) Olive oil
- b) Butter
- c) Salmon
- d) Cheese

Q3. Which condition is caused by a deficiency of vitamin C? (1)

- a) Rickets
- b) Scurvy
- c) Pellagra
- d) Beriberi

Q4. Which vitamin is primarily obtained from sunlight exposure? (1)

- a) Vitamin A
- b) Vitamin B12
- c) Vitamin C
- d) Vitamin D

Q5. Which vitamin is essential for proper vision? (1)

- A) Vitamin A
- B) Vitamin C
- C) Vitamin D
- D) Vitamin K

Q6. What percentage of the human body is composed of water? (1)

- A) 50-55%
- B) 60-65%
- C) 70-75%
- D) 80-85%

Q7. Very short answer type questions- (5x1= 5)

- I. What is the main function of carbohydrates in the body?
- II. What nutrient deficiency causes anaemia?
- III. What is the primary function of protein in the body?
- IV. What is the recommended daily intake of water for an average adult?
- V. Which vitamin is an antioxidant that helps protect cells from damage?

Q8. Short answer type questions- (2x2= 4)

- I. How does food preservation contribute to maintaining food quality and safety?
- II. What is Malnutrition? Write any one way of how it can be prevented.

Class IX Worksheet 4

Q9. Make a table enlisting the advantages and disadvantages of Frying, Boiling and Microwave on a A4 size sheet. (5)

Q10. Determine which foods belong to which food groups. Create a chart on an A3 sheet by pasting food item pictures in the suitable food groups. (5)

Cereals	Legumes & pulses	Nuts & Oilseeds	Fats & Oils	Fruits & Vegetables	Milk products	Eggs, poultry, fish, and meat	Spices

Subject: Music

- Q1. Differentiate between Murki and Meed. (2.5)
- Q2. Write the notation of Teen Taal. (2.5)
- Q3. Write the meaning of the following. (5)
- a) Aaroh
 - b) Avroha
 - c) Pakad
 - d) Vadi Swar
 - e) Time of singing
- Q4. Draw labelled diagram of Tanpura. (5)

Subject: Painting

Instruction: Please do theory questions in your note book and practical in your art file

- Q1. What is negative and positive space in art? (5)
- Q2. How do you explain colour value? Make one example (5)
- Q3. Make a northern lights forest with poster colours. (15)